

1

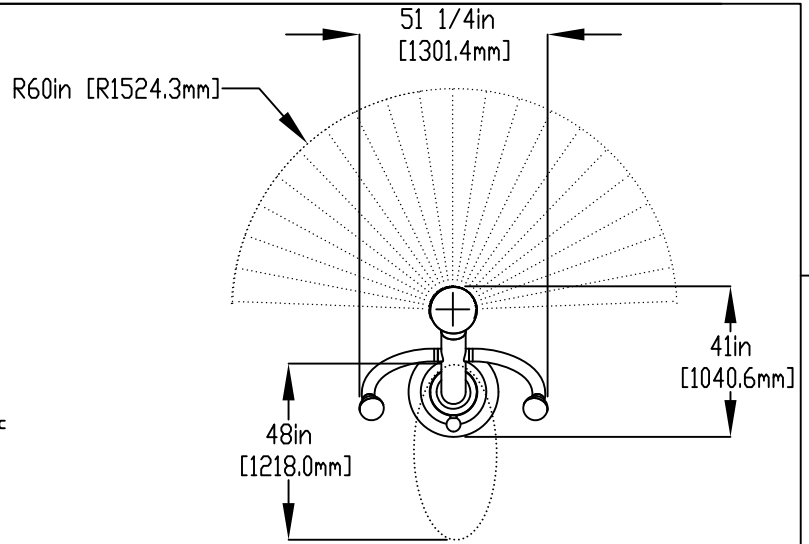
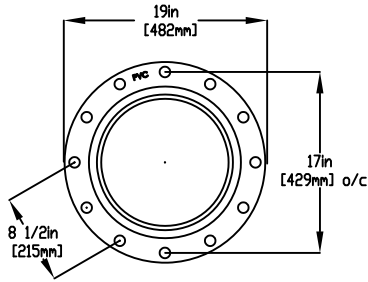
2

3

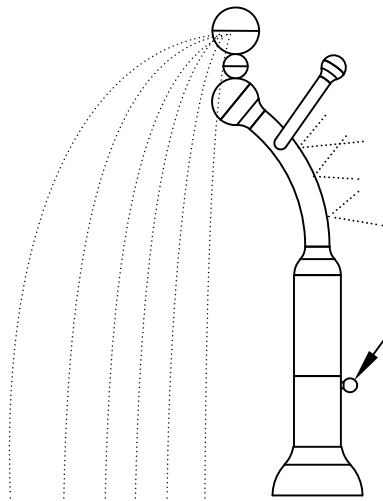
4

NOTES:

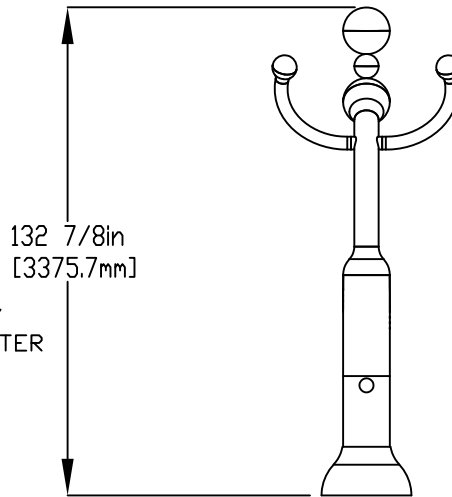
- (1) PURGE ALL WATER SUPPLY LINES TO REMOVE SOLIDS PRIOR TO TOY INSTALLATION.
- (2) PROVIDE ELECTRICAL BOND WITH POOL REBAR.
- (3) INSTALL ALL WATER TOYS PLUMB AND LEVEL.
- (4) PROVIDE STRAINER UPSTREAM OF TOY WITH MAX 1/32" (0.8mm) PERFORATIONS.



FLANGE DETAIL



2-WAY DIVERTER



LOWER FLANGE COVER AFTER TOY IS INSTALLED.

5/8" (16mm) X9" (230mm) 316SS, THREADED ROD C/W FENDER WASHER, LOCK WASHER & NUT (X6), MINIMUM 6" (150mm) EMBEDMENT, WITH EPOXY SET ANCHOR ADHESIVE TO BE PROVIDED BY CONTRACTOR

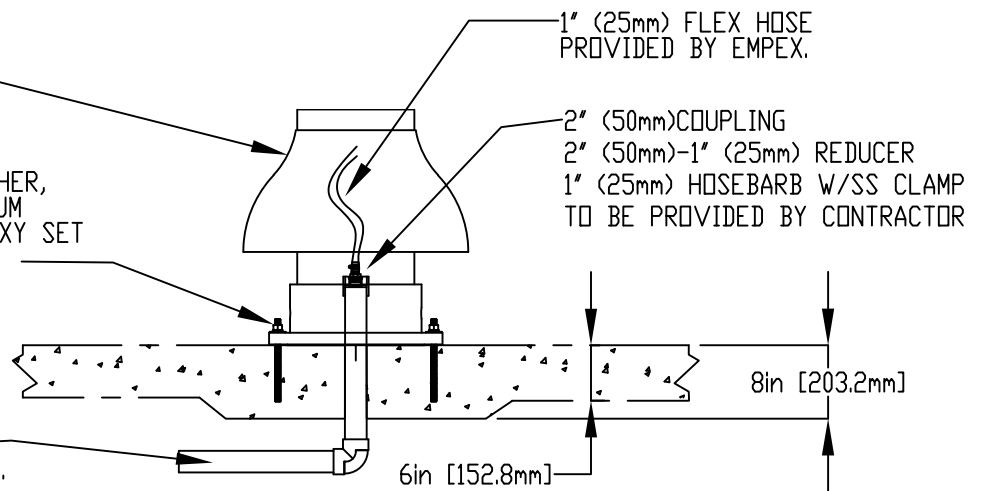
1" (25mm) FLEX HOSE PROVIDED BY EMPEX.

2" (50mm) COUPLING

2" (50mm)-1" (25mm) REDUCER

1" (25mm) HOSEBARB W/SS CLAMP TO BE PROVIDED BY CONTRACTOR

WATERFEED
2" (50mm) PVC SCH 40 PIPE
EXTENDED 6" (152mm) ABOVE SLAB.



A

A

B

B

C

C

D

D

E

E

F

F



Notes: Overall dimensions of toys are approximate.
Approximate Weight: 175LBS / 79.5KGS

© EMPEX WATERTOYS

WATER SUPPLY

30 gpm @ 25 psi
1.89L/S @17.5m

AQUABAT #6

AB106

01/04/2020

SCALE:

Sheet 1 of 1

1

2

3

4