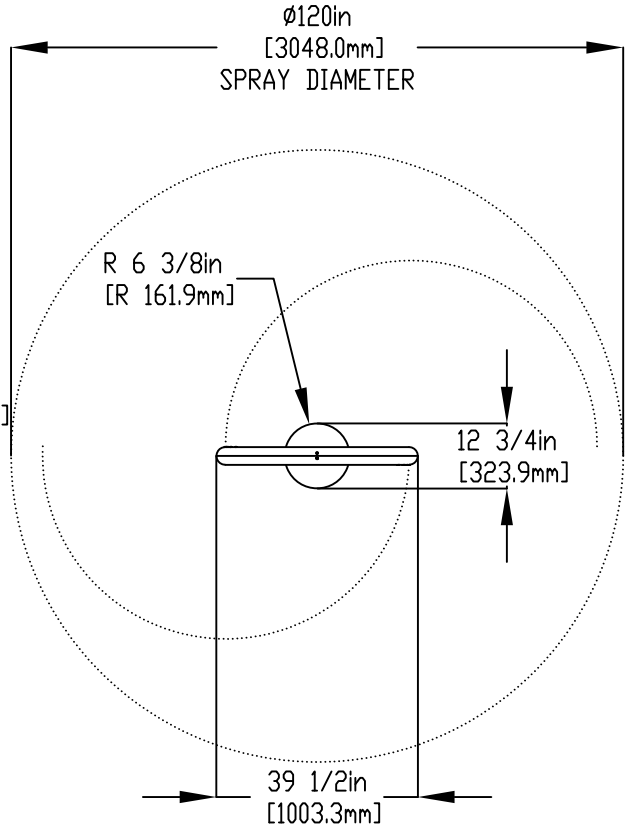
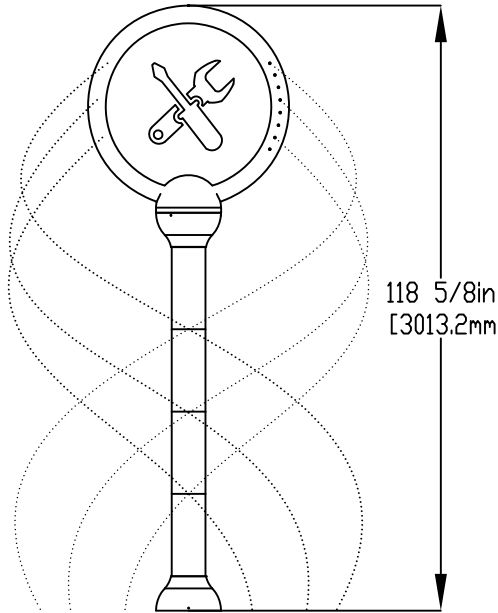


NOTES:

- (1) PURGE ALL WATER SUPPLY LINES TO REMOVE SOLIDS PRIOR TO TOY INSTALLATION.
- (2) PROVIDE ELECTRICAL BOND WITH POOL REBAR.
- (3) INSTALL ALL WATER TOYS PLUMB AND LEVEL.
- (4) PROVIDE STRAINER UPSTREAM OF TOY WITH MAX 1/32" (0.8mm) PERFORATIONS.



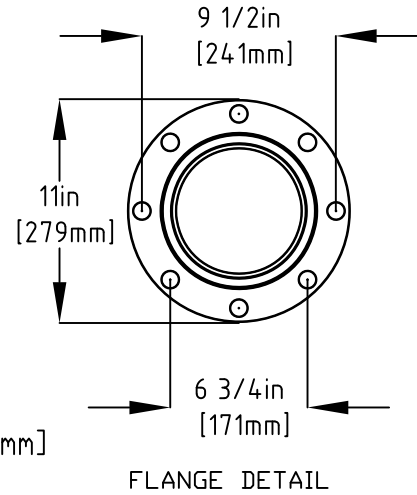
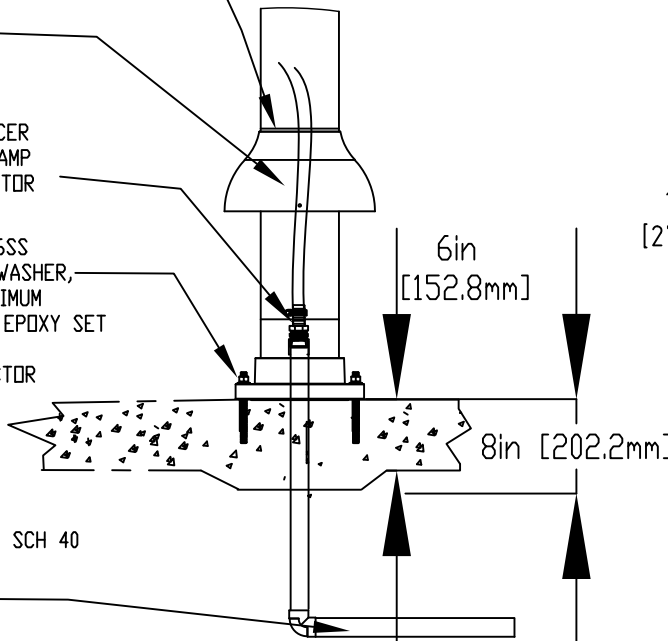
LOWER FLANGE FOR INSTALL

1" (25mm) FLEX HOSE PROVIDED BY EMPEX

2" (50mm) COUPLING
2" (50mm) TO 1" (25mm) REDUCER
1" (25mm) HOSEBARB & SS CLAMP TO BE PROVIDED BY CONTRACTOR

5/8" (16mm) x 9" (229mm) 316SS THREADED ROD C/W FENDER WASHER, LOCKWASHER & NUT (X6), MINIMUM 6" (152mm) EMBEDMENT, WITH EPOXY SET ANCHOR ADHESIVE TO BE PROVIDED BY CONTRACTOR

WATERFEED 2" (50mm) PVC SCH 40 EXTENDED 6" (150mm) ABOVE POOL SLAB



FLANGE DETAIL

Notes: Overall dimensions of toys are approximate.

© EMPEX WATERTOYS



WATER SUPPLY
30 gpm @ 25 psi
1.89L/S @17.5m

AQUATWIRL

ABU103

17/02/22

SCALE:

Sheet
1 of 1