

1

2

3

4

NOTES:

- (1) PURGE ALL WATER SUPPLY LINES TO REMOVE SOLIDS PRIOR TO TOY INSTALLATION.
- (2) PROVIDE ELECTRICAL BOND WITH POOL REBAR.
- (3) INSTALL ALL WATER TOYS PLUMB AND LEVEL.
- (4) PROVIDE STRAINER UPSTREAM OF TOY WITH MAX 1#32" (0.8mm) PERFORATIONS.

A

B

C

D

E

F

A

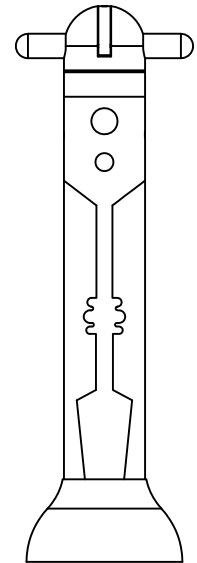
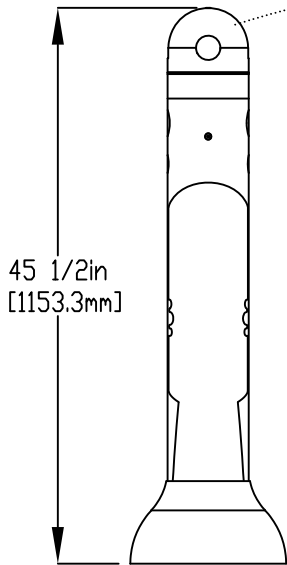
B

C

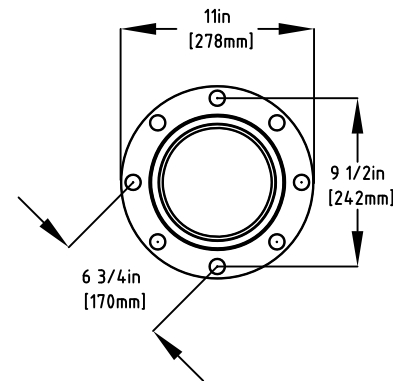
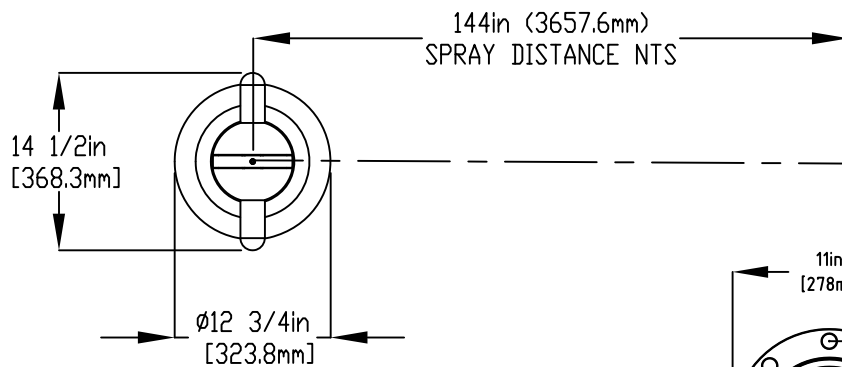
D

E

F



FRONT VIEW

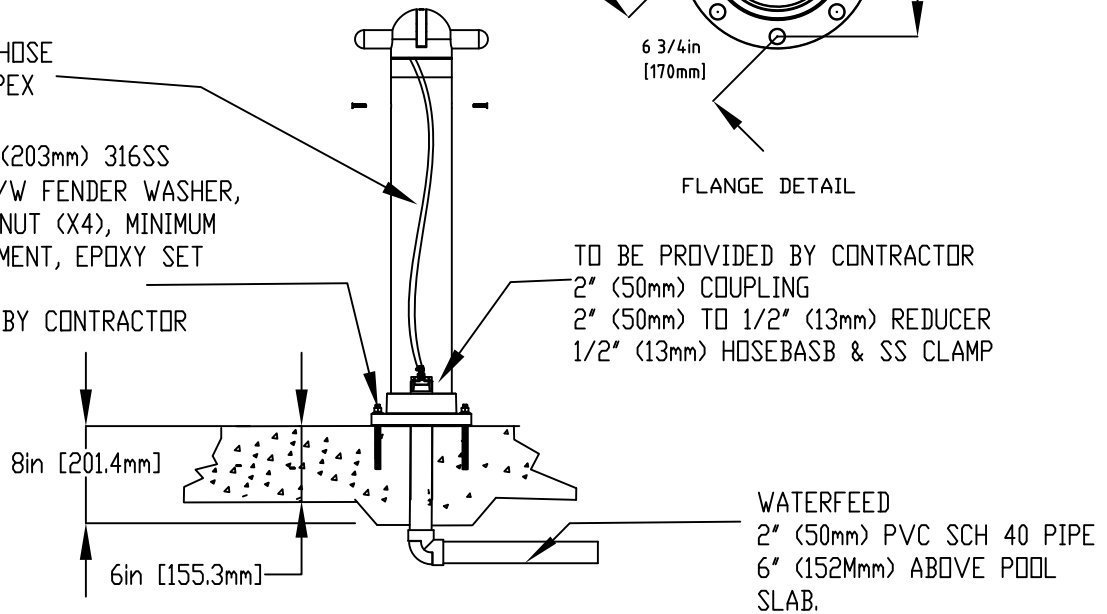


FLANGE DETAIL

1/2" (13mm) FLEX HOSE PROVIDED BY EMPEX

1/2" (13mm) X 8" (203mm) 316SS THREADED ROD, C/W FENDER WASHER, LOCK WASHER, & NUT (X4), MINIMUM 6" (152mm) EMBEDMENT, EPOXY SET ANCHOR ADHESIVE TO BE PROVIDED BY CONTRACTOR

TO BE PROVIDED BY CONTRACTOR  
 2" (50mm) COUPLING  
 2" (50mm) TO 1/2" (13mm) REDUCER  
 1/2" (13mm) HOSEBASB & SS CLAMP



WATERFEED  
 2" (50mm) PVC SCH 40 PIPE  
 6' (152mm) ABOVE POOL SLAB.

Notes: Overall dimensions of toys are approximate.

© EMPEX WATERTOYS



WATER SUPPLY  
 20 gpm @ 25 psi  
 1.26L/S @17.5m

AQUAHAMMER

(Tech Sheet)

ABU404S

01/04/2020

SCALE:

Sheet 1 of 1

1

2

3

4