

1

2

3

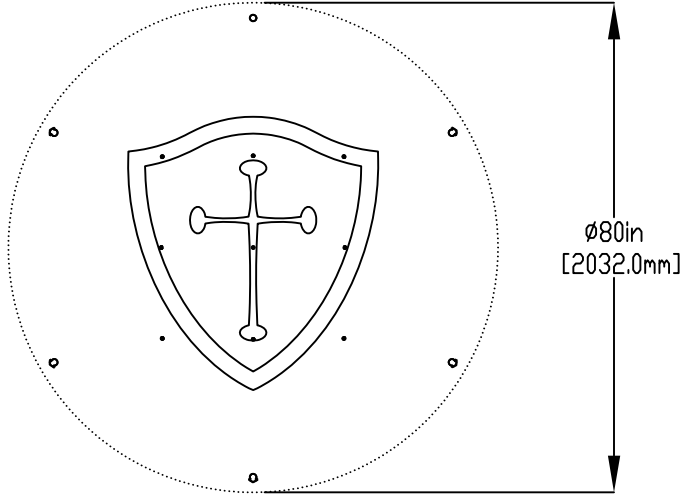
4

NOTES:

- (1) PURGE ALL WATER SUPPLY LINES TO REMOVE SOLIDS PRIOR TO TOY INSTALLATION.
- (2) PROVIDE ELECTRICAL BOND WITH POOL REBAR.
- (3) INSTALL ALL WATER TOYS PLUMB AND LEVEL.
- (4) PROVIDE STRAINER UPSTREAM OF TOY WITH MAX 1/32" (0.8mm) PERFORATIONS.

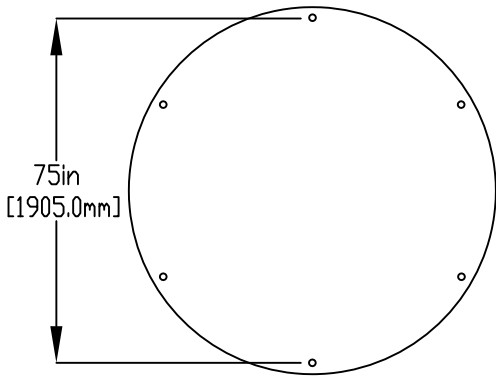
A

A

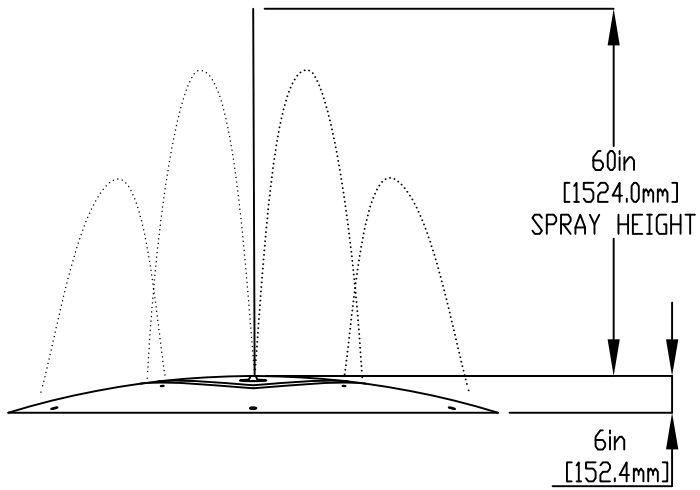


B

B



BOLT PATTERN



C

C

D

D

1 1/2" (38mm) FLEX HOSE PROVIDED BY EMPEX.

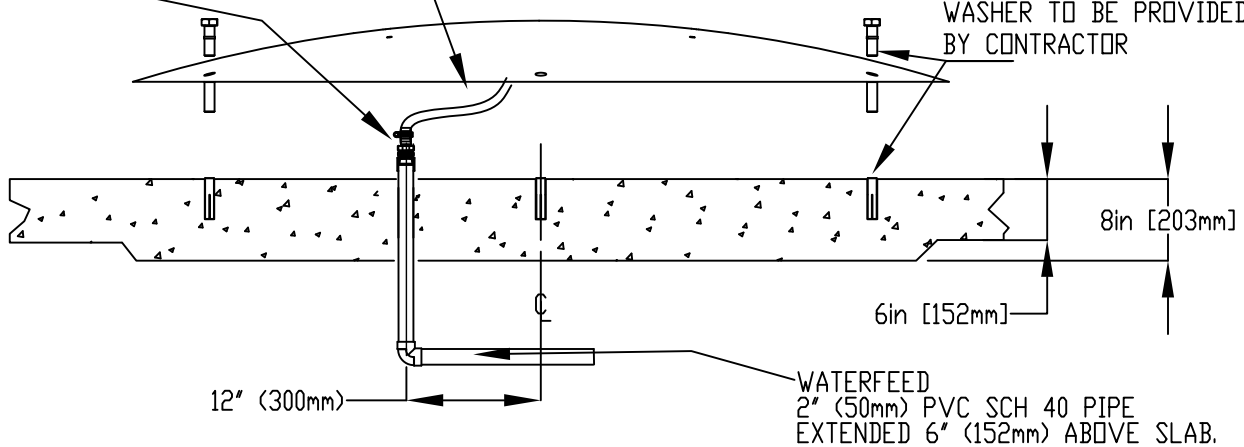
2" (50mm) COUPLING
2" (50mm) TO 1-1/2" (38mm) REDUCER
1-1/2" (38mm) HOSEBARB & SS CLAMP
TO BE PROVIDED BY CONTRACTOR

YELLOW BOLT COVER PROVIDED BY EMPEX

3/8" (10mm) FEMALE CONCRETE 316SS ANCHOR, HEX BOLT & WASHER TO BE PROVIDED BY CONTRACTOR

E

E



12" (300mm)

WATERFEED
2" (50mm) PVC SCH 40 PIPE
EXTENDED 6" (152mm) ABOVE SLAB.

6in [152mm]

8in [203mm]

F

F



Notes: Overall dimensions of toys are approximate.
Approximate Weight: 156lbs / 70.9kgs

© EMPEX WATERTOYS

WATER SUPPLY

45 gpm @ 10 psi
2.8L/S @ 7m

AQUADOME CASTLE

AC447

3/31/2020

SCALE:

Sheet
1 of 1

1

2

3

4