

1

2

3

4

NOTES:

- (1) PURGE ALL WATER SUPPLY LINES TO REMOVE SOLIDS PRIOR TO TOY INSTALLATION.
- (2) PROVIDE ELECTRICAL BOND WITH POOL REBAR.
- (3) INSTALL ALL WATER TOYS PLUMB AND LEVEL.
- (4) PROVIDE STRAINER UPSTREAM OF TOY WITH MAX 1/32" (0.8mm) PERFORATIONS.

A

A

B

B

C

C

D

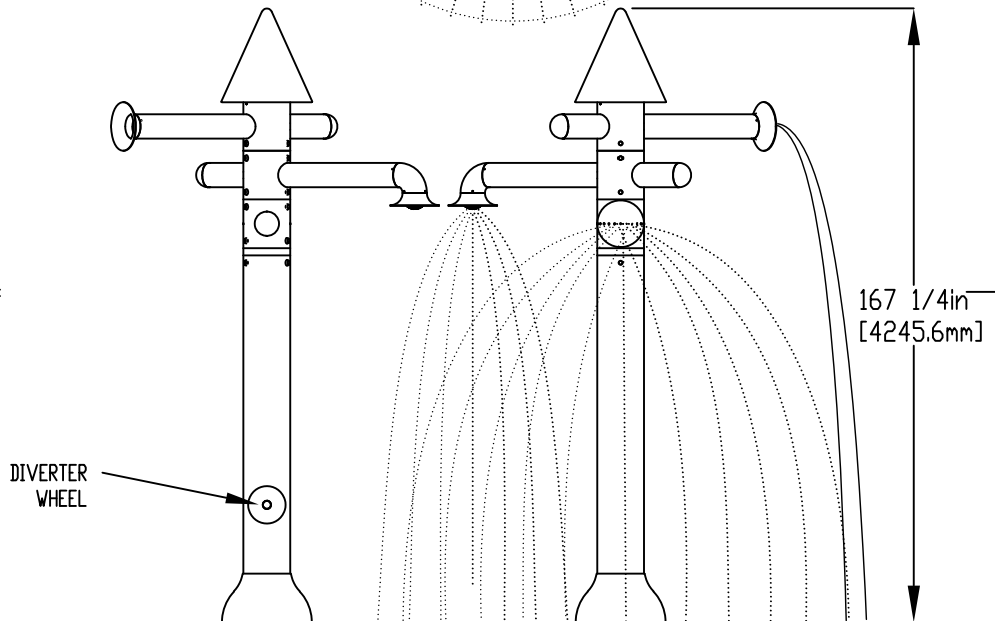
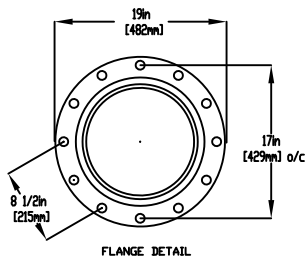
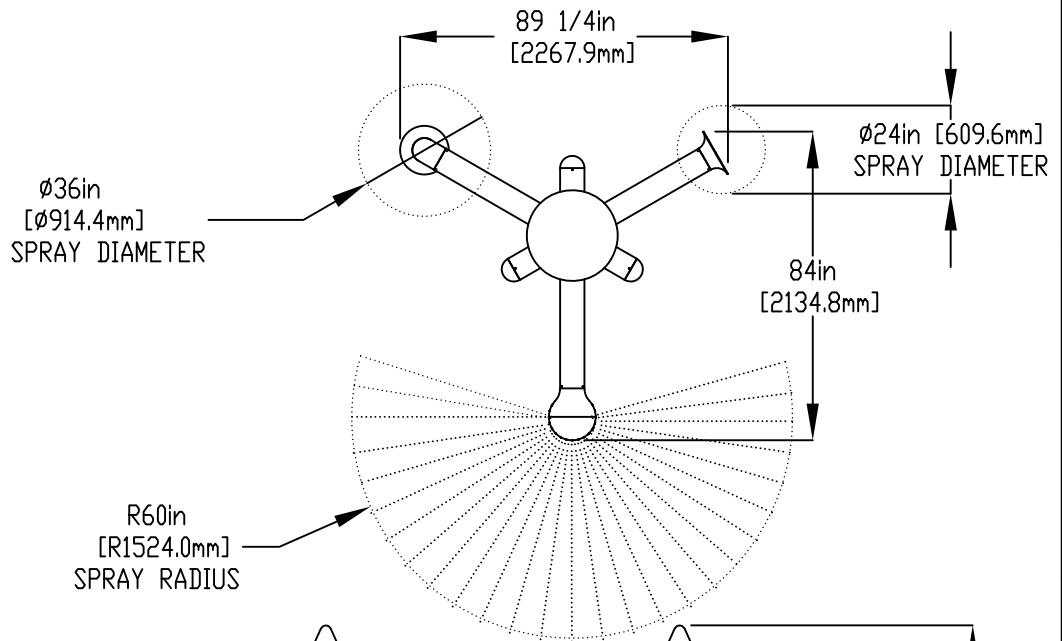
D

E

E

F

F



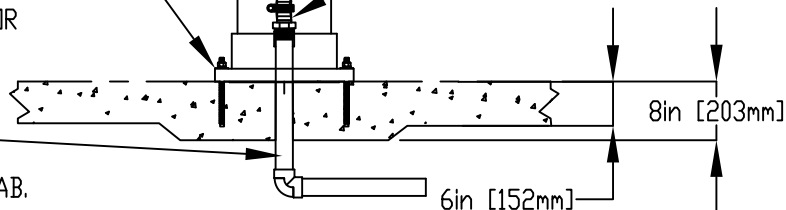
LOWER FLANGE COVER AFTER TOY IS INSTALLED.

5/8" (16mm) x 9" (230mm), 316SS THREADED ROD, C/W FENDER WASHER, LOCK WASHER, & NUT (X6). MINIMUM 6" (152mm) EMBEDMENT, EPOXY SET ANCHOR ADHESIVE TO BE PROVIDED BY CONTRACTOR

2" (50mm) FLEX HOSE PROVIDED BY EMPEX.

2" (50mm) COUPLING
2" (50mm) HOSEBARB W/SS CLAMP TO BE PROVIDED BY CONTRACTOR

WATERFEED
2" (50mm) PVC SHC 40 PIPE EXTENDED 6" (152mm) ABOVE SLAB.



Notes: Overall dimensions of toys are approximate.
Approximate Weight: 185lbs / 84.1kgs

© EMPEX WATERTOYS



WATER SUPPLY
30 gpm @ 25 psi
1.89L/S @17.5m

AQUATRIO

AC735

7/9/2021

SCALE:

Sheet 1 of 1

1

2

3

4