

1

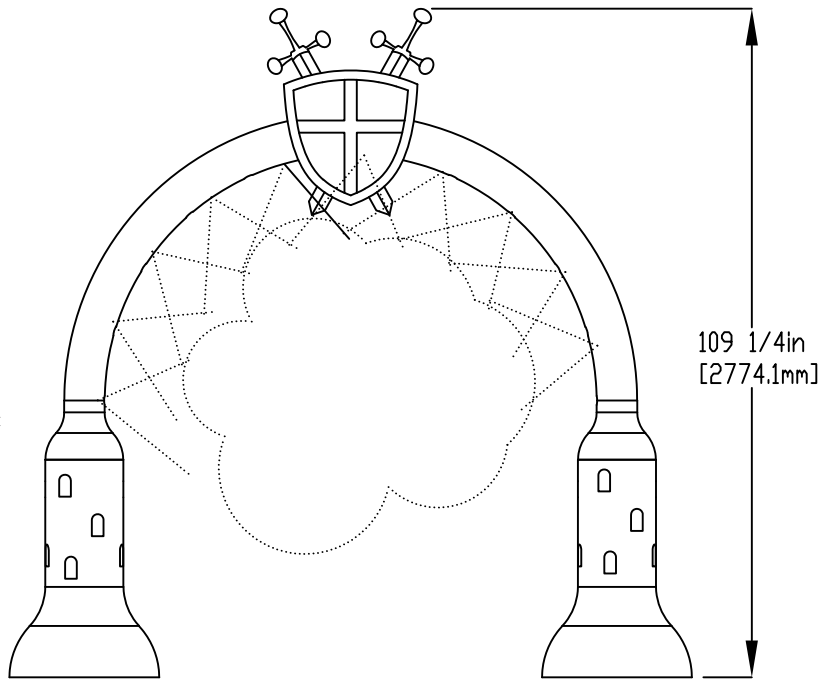
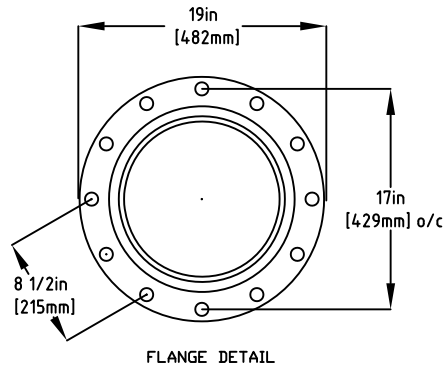
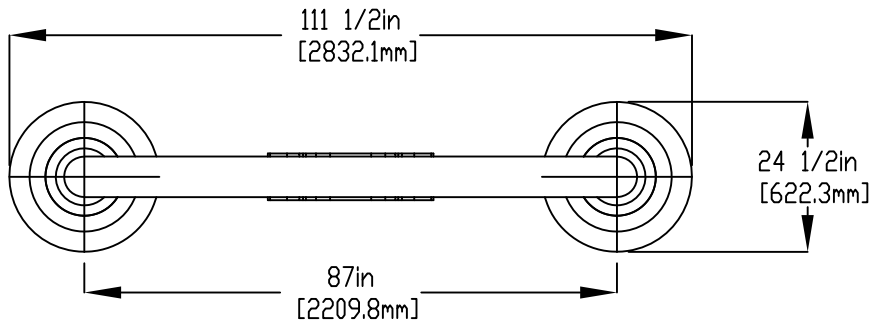
2

3

4

NOTES:

- (1) PURGE ALL WATER SUPPLY LINES TO REMOVE SOLIDS PRIOR TO TOY INSTALLATION.
- (2) PROVIDE ELECTRICAL BOND WITH POOL REBAR.
- (3) INSTALL ALL WATER TOYS PLUMB AND LEVEL.
- (4) PROVIDE STRAINER UPSTREAM OF TOY WITH MAX 1/32" (0.8mm) PERFORATIONS.

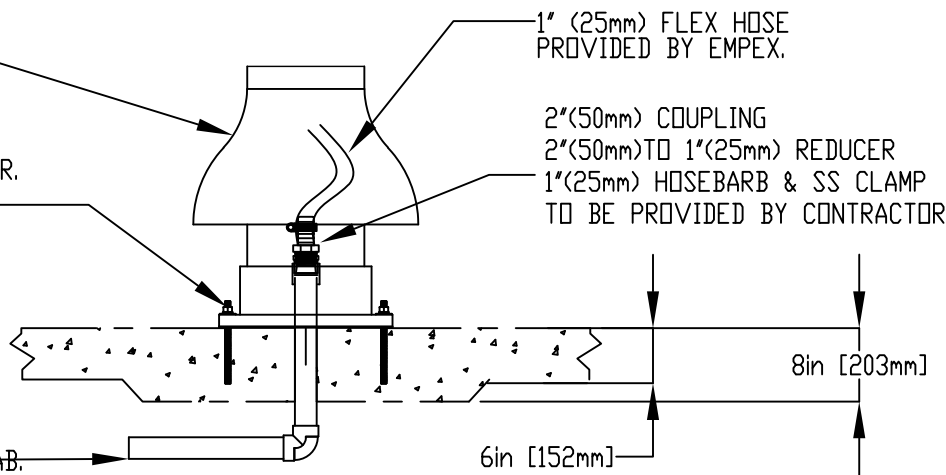


LOWER FLANGE COVER AFTER TOY IS INSTALLED.

5/8" (16mm) X 9" (230mm) 316SS
 THREADED ROD C/W FENDER WASHER,
 LOCK WASHER & NUT (X6), MINIMUM
 6" (150mm) EMBEDMENT. EPOXY SET
 ANCHOR ADHESIVE
 TO BE PROVIDED BY CONTRACTOR

1" (25mm) FLEX HOSE PROVIDED BY EMPEX.

2" (50mm) COUPLING
 2" (50mm) TO 1" (25mm) REDUCER
 1" (25mm) HOSE BARB & SS CLAMP
 TO BE PROVIDED BY CONTRACTOR



WATERFEED
 2" (50mm) SCH 40 PVC PIPE
 EXTENDED 6" (152mm) ABOVE SLAB.

Notes: Overall dimensions of toys are approximate.
 Approximate Weight: 264lbs / 120kgs

© EMPEX WATERTOYS



WATER SUPPLY

35 gpm @ 25 psi
 2.21L/S @17.5m

AQUABOW CASTLE

AC811

01/05/2020

SCALE:

Sheet 1 of 1

1

2

3

4