

NOTES:

(1) PURGE ALL WATER SUPPLY LINES TO REMOVE SOLIDS PRIOR TO TOY INSTALLATION.

(2) PROVIDE ELECTRICAL BOND WITH POOL REBAR.

(3) INSTALL ALL WATER TOYS PLUMB AND LEVEL.

(4) PROVIDE STRAINER UPSTREAM OF TOY WITH MAX 1/32" (0.8mm) PERFORATIONS.

A

A

B

B

C

C

D

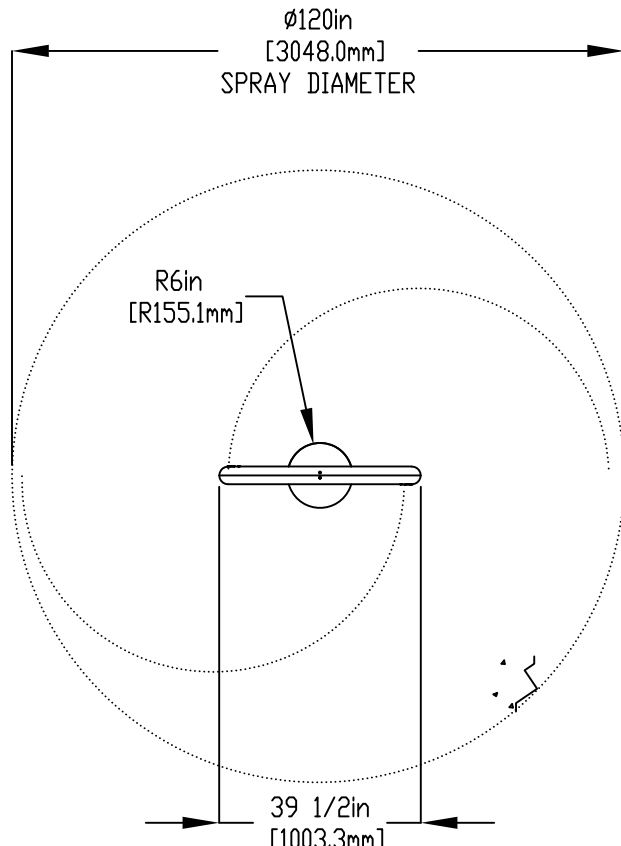
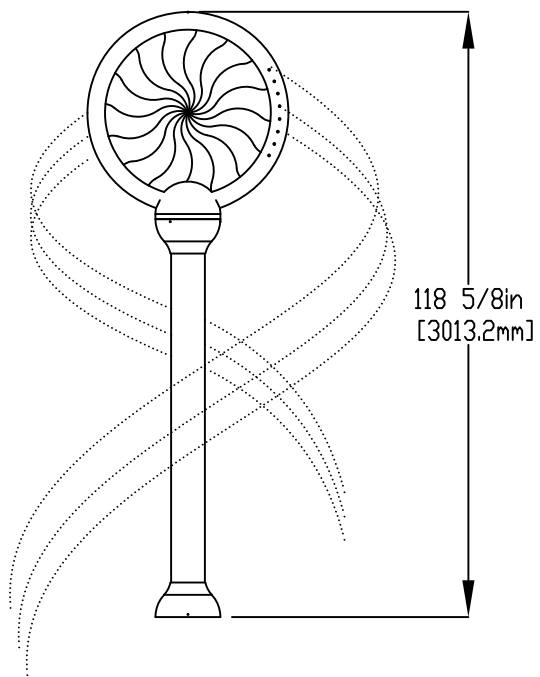
D

E

E

F

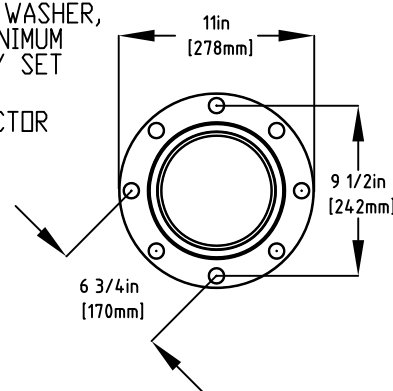
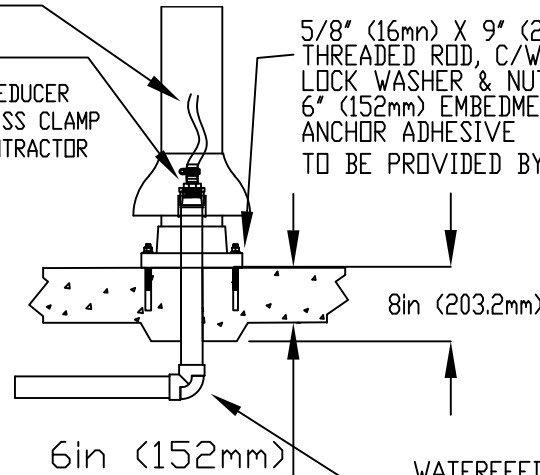
F



1" (25mm) FLEX HOSE PROVIDED BY EMPEX.

2" (50mm) COUPLING  
2" (50mm) TO 1" (25mm) REDUCER  
1" (25mm) HOSEBARB W/ SS CLAMP TO BE PROVIDED BY CONTRACTOR

5/8" (16mm) X 9" (229mm) 316SS THREADED ROD, C/W FENDER WASHER, LOCK WASHER & NUT (X4) MINIMUM 6" (152mm) EMBEDMENT. EPOXY SET ANCHOR ADHESIVE TO BE PROVIDED BY CONTRACTOR



6 in (152mm)

WATERFEED  
2" (50mm) PVC SCH 40 PIPE EXTENDED 6" (150mm) ABOVE SLAB

FLANGE DETAIL

Notes: Overall dimensions of toys are approximate.  
Approximate Weight: 134lbs / 60.9kgs

© EMPEX WATERTOYS



WATER SUPPLY  
30 gpm @ 25 psi  
1.89L/S @17.5m

AQUALOLLIE

AD102

01/05/2020

SCALE:

Sheet 1 of 2