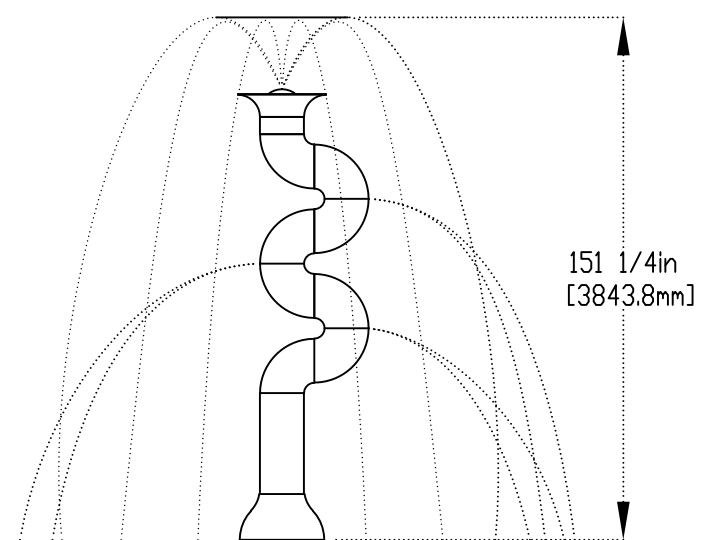
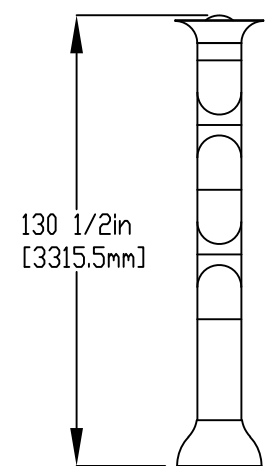
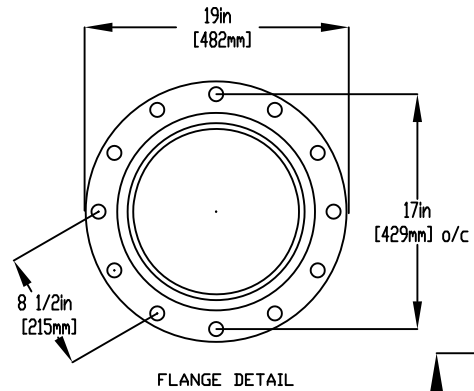
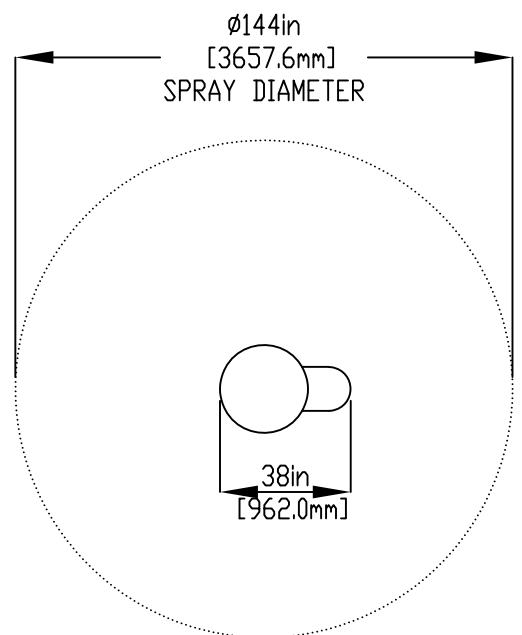


NOTES:

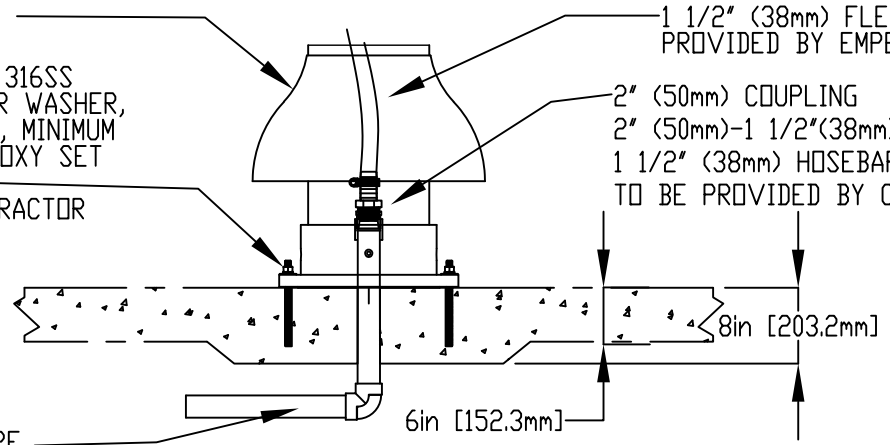
- (1) PURGE ALL WATER SUPPLY LINES TO REMOVE SOLIDS PRIOR TO TOY INSTALLATION.
- (2) PROVIDE ELECTRICAL BOND WITH POOL REBAR.
- (3) INSTALL ALL WATER TOYS PLUMB AND LEVEL.
- (4) PROVIDE STRAINER UPSTREAM OF TOY WITH MAX 1/32" (0.8mm) PERFORATIONS.



LOWER FLANGE COVER AFTER TOY IS INSTALLED.

5/8" (16mm) X 9" (230mm) 316SS THREADED ROD, C/W FENDER WASHER, LOCK WASHER, & NUT (X6), MINIMUM 6" (152mm) EMBEDMENT, EPOXY SET ANCHOR ADHESIVE TO BE PROVIDED BY CONTRACTOR

1 1/2" (38mm) FLEX HOSE PROVIDED BY EMPEX.
 2" (50mm) COUPLING
 2" (50mm)-1 1/2" (38mm) REDUCER
 1 1/2" (38mm) HOSEBARB W/SS CLAMP TO BE PROVIDED BY CONTRACTOR



WATERFEED
 2" (50mm) SCH 40 PVC PIPE EXTENDED 6" (152mm) ABOVE SLAB.

Notes: Overall dimensions of toys are approximate.
 Approximate Weight: 142lbs / 64.5kgs

© EMPEX WATERTOYS



WATER SUPPLY
 50 gpm @ 25 psi
 3.15 L/S @ 17.5m

AQUARHYM DOLCE

AD882

11/02/2022

SCALE:

Sheet
 1 of 1