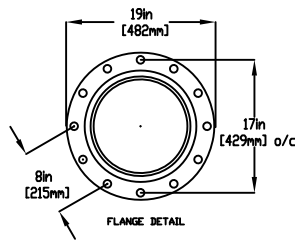
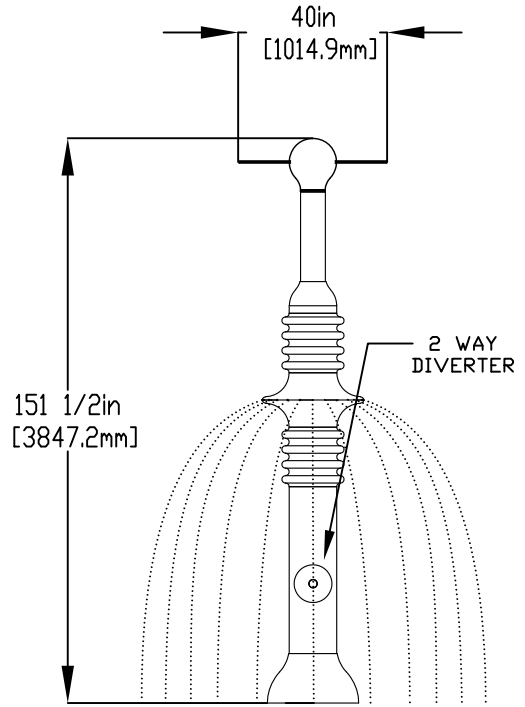
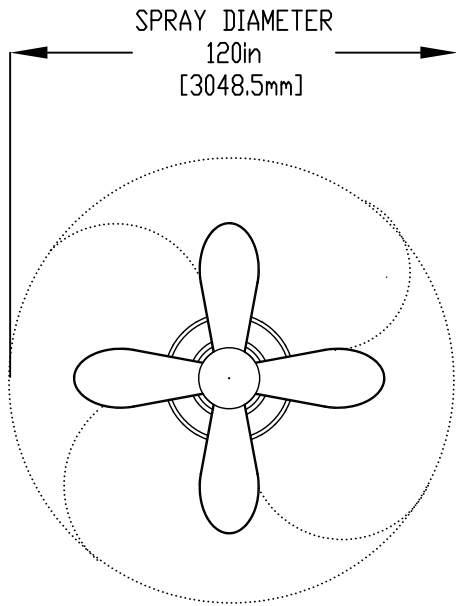


NOTES:

- (1) PURGE ALL WATER SUPPLY LINES TO REMOVE SOLIDS PRIOR TO TOY INSTALLATION.
- (2) PROVIDE ELECTRICAL BOND WITH POOL REBAR.
- (3) INSTALL ALL WATER TOYS PLUMB AND LEVEL.
- (4) PROVIDE STRAINER UPSTREAM OF TOY WITH MAX 1/32" (0.8mm) PERFORATIONS.

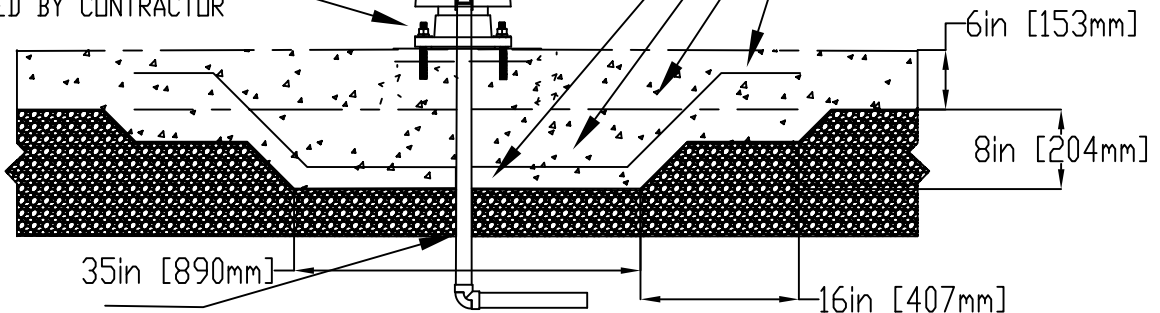


1" (25mm) FLEX HOSE PROVIDED BY EMPEX.

2" (50mm) COUPLING
 2" (50mm) - 1" (25mm) REDUCER
 1" (25mm) HOSEBARB W/ SS CLAMP TO BE PROVIDED BY CONTRACTOR

5/8" (16mm) X 9" (230mm) 316SS THREADED ROD, C/W FENDER WASHER, LOCK WASHER, & NUT (X6). MINIMUM 6" (152mm) EMBEDMENT, EPOXY SET ANCHOR ADHESIVE TO BE PROVIDED BY CONTRACTOR

12 - #4 @ 10" (250mm) EACH WAY
 10 - #4 @ 10" (250mm) EACH WAY
 8 - #4 @ 10" (250mm) EACH WAY
 4 - #4 @ 10" (250mm) EACH SIDE



WATERFEED
 2" (50mm) PVC SCH 40 PIPE
 EXTENDED 6" (152mm) ABOVE SLAB

Notes: Overall dimensions of toys are approximate.
 Approximate Weight: TBD

© EMPEX WATERTOYS



WATER SUPPLY
 30 gpm @ 25 psi
 1.89L/S @17.5m

AQUASWIRL AERO

AE303

08/04/2020

SCALE:

Sheet
 1 of 1