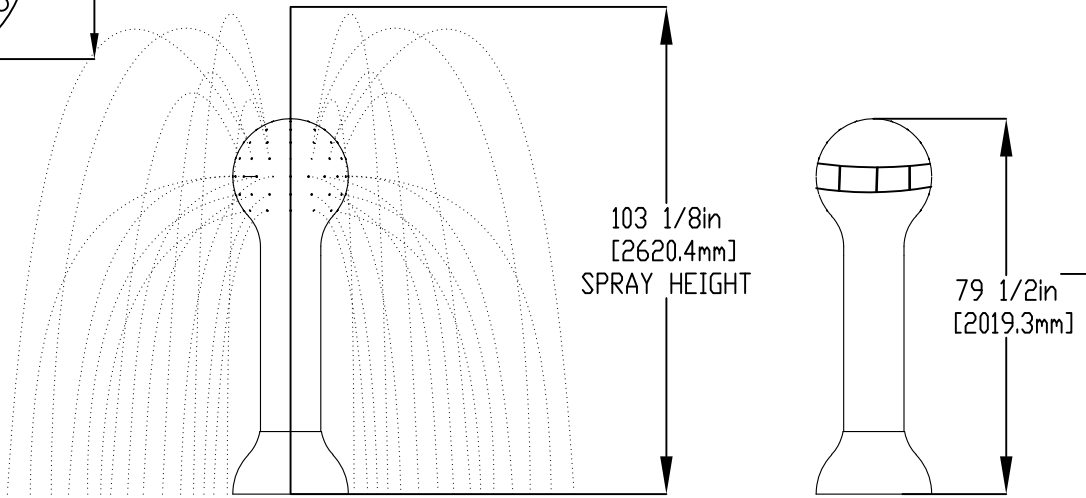
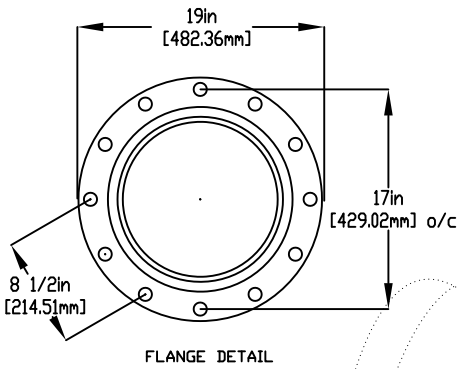


**NOTES:**

- (1) PURGE ALL WATER SUPPLY LINES TO REMOVE SOLIDS PRIOR TO TOY INSTALLATION.
- (2) PROVIDE ELECTRICAL BOND WITH POOL REBAR.
- (3) INSTALL ALL WATER TOYS PLUMB AND LEVEL.
- (4) PROVIDE STRAINER UPSTREAM OF TOY WITH MAX 1/32" (0.8mm) PERFORATIONS.

Ø120in  
[3048.0mm]  
SPRAY DIAMETER

24 1/2in  
[622.3mm]



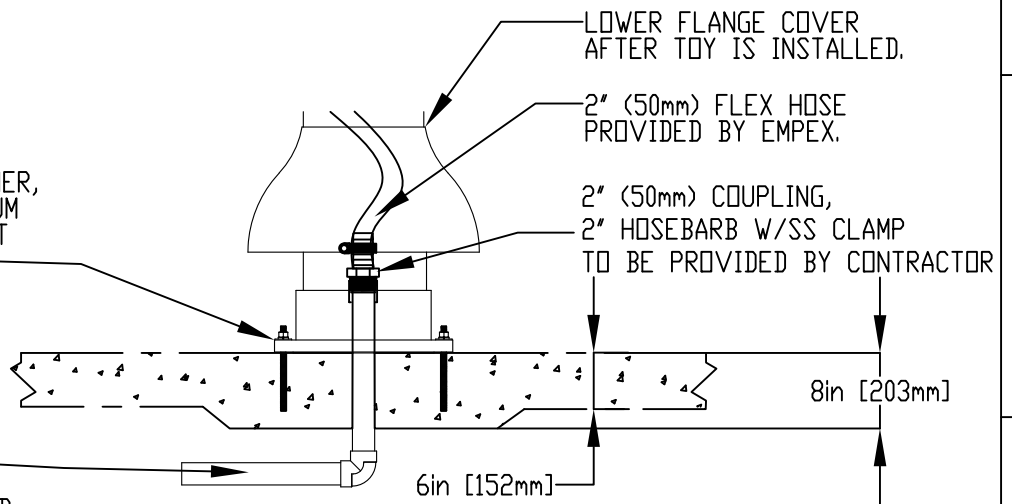
5/8" (16mm) X 9" (230mm) 316SS  
THREADED ROD C/W FENDER WASHER,  
LOCK WASHER, & NUT (X6). MINIMUM  
6" (152mm) EMBEDMENT, EPOXY SET  
ANCHOR ADHESIVE  
TO BE PROVIDED BY CONTRACTOR

LOWER FLANGE COVER  
AFTER TOY IS INSTALLED.

2" (50mm) FLEX HOSE  
PROVIDED BY EMPEX.

2" (50mm) COUPLING,  
2" HOSEBARB W/SS CLAMP  
TO BE PROVIDED BY CONTRACTOR

2" (50mm) SCH 40 PVC PIPE  
WATERFEED TO BE EXTENDED  
EXTENDED 6" (152mm) ABOVE SLAB.



Notes: Overall dimensions of toys are approximate.  
Approximate Weight: 126LBS / 57.3KGS

© EMPEX WATERTOYS



WATER SUPPLY

60 gpm @ 25 psi  
3.79 L/S @17.5m

**AQUATOWER**

AE818

07/07/2022

SCALE:

Sheet  
1 of 1