

1

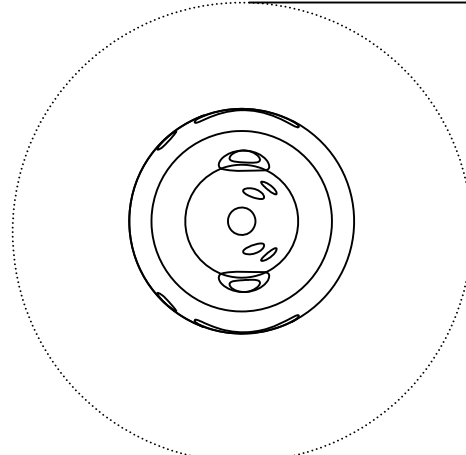
2

3

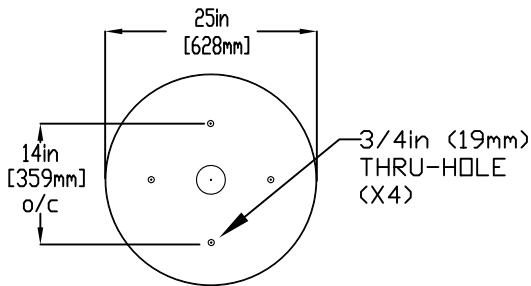
4

NOTES:

- (1) PURGE ALL WATER SUPPLY LINES TO REMOVE SOLIDS PRIOR TO TOY INSTALLATION.
- (2) PROVIDE ELECTRICAL BOND WITH POOL REBAR.
- (3) INSTALL ALL WATER TOYS PLUMB AND LEVEL.
- (4) PROVIDE STRAINER UPSTREAM OF TOY WITH MAX 1/32" (0.8mm) PERFORATIONS.



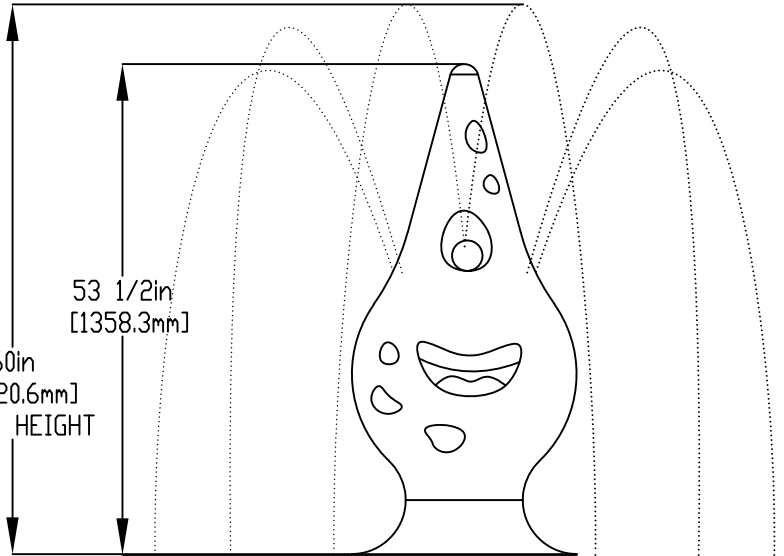
[2438mm]  
 ∅ 96in  
 SPRAY DIAMETER NTS



MOUNTING PLATE DETAIL

60in  
 [1520.6mm]  
 SPRAY HEIGHT

53 1/2in  
 [1358.3mm]

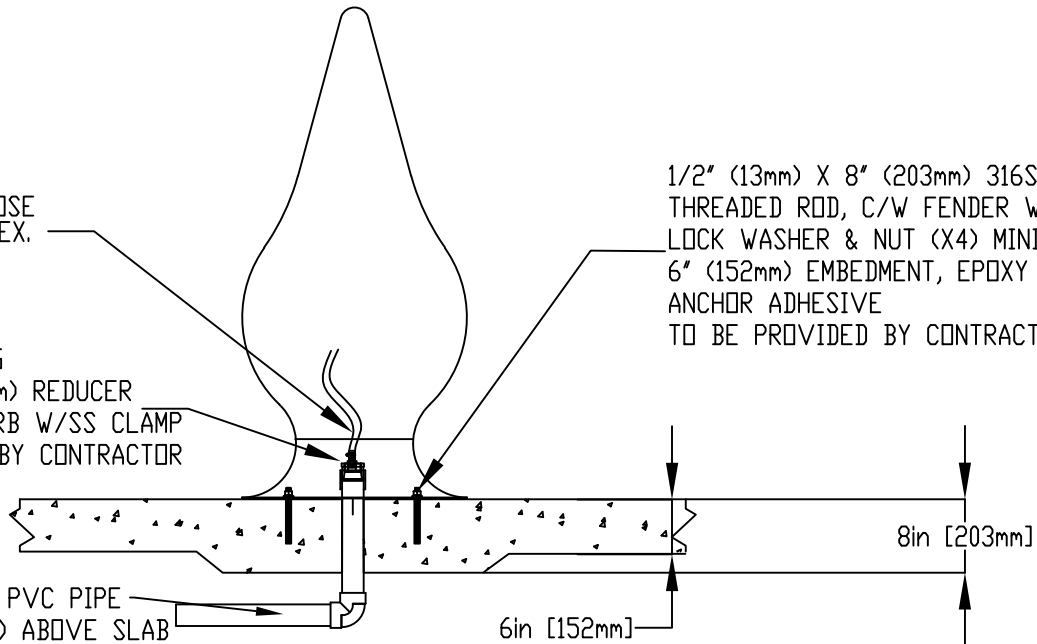


1" (25mm) FLEX HOSE PROVIDED BY EMPEX.

1/2" (13mm) X 8" (203mm) 316SS THREADED ROD, C/W FENDER WASHER LOCK WASHER & NUT (X4) MINIMUM 6" (152mm) EMBEDMENT, EPOXY SET ANCHOR ADHESIVE TO BE PROVIDED BY CONTRACTOR

2" (50mm) COUPLING  
 2" (50mm)-1" (25mm) REDUCER  
 1" (25mm) HOSEBARB W/SS CLAMP TO BE PROVIDED BY CONTRACTOR

WATERFEED  
 2" (50mm) SCH 40 PVC PIPE EXTEND 6" (152mm) ABOVE SLAB



8in [203mm]

6in [152mm]



Notes: Overall dimensions of toys are approximate.

© EMPEX WATERTOYS

WATER SUPPLY  
 30 gpm @ 25 psi  
 1.89L/S @17.5m

AQUAPLUTO

AG102

16/11/2022

SCALE:

Sheet  
 1 of 1

1

2

3

4