

**NOTES:**

(1) PURGE ALL WATER SUPPLY LINES TO REMOVE SOLIDS PRIOR TO TOY INSTALLATION.

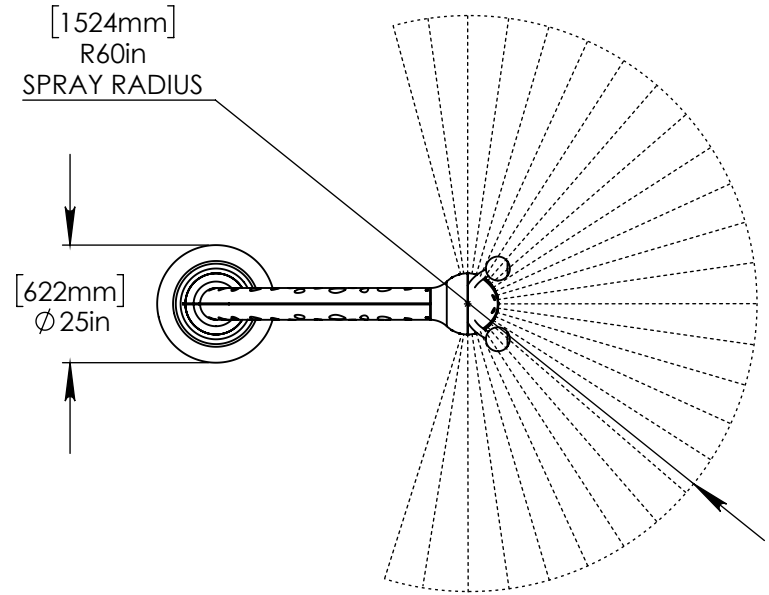
(2) PROVIDE ELECTRICAL BOND WITH POOL REBAR.

(3) INSTALL ALL WATER TOYS PLUMB AND LEVEL.

(4) PROVIDE STRAINER UPSTREAM OF TOY WITH MAX 1#32" (0.8mm) PERFORATIONS.

[1524mm]  
R60in  
SPRAY RADIUS

[622mm]  
Ø 25in

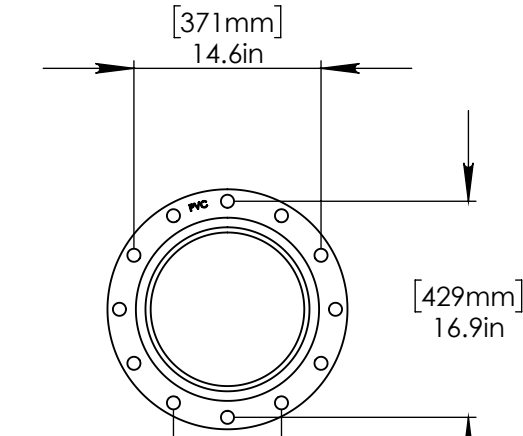


[371mm]  
14.6in

[429mm]  
16.9in

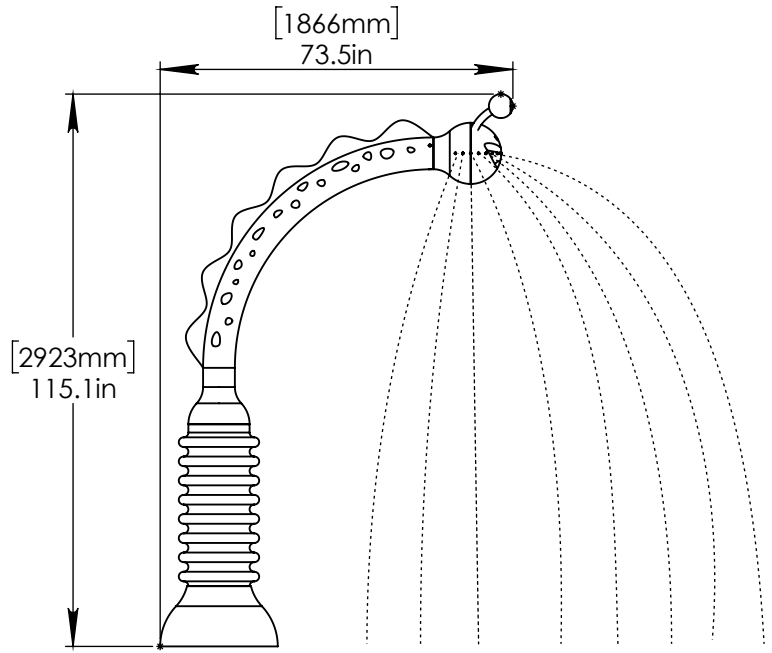
[214mm]  
8.4in

FLANGE DETAIL



[1866mm]  
73.5in

[2923mm]  
115.1in



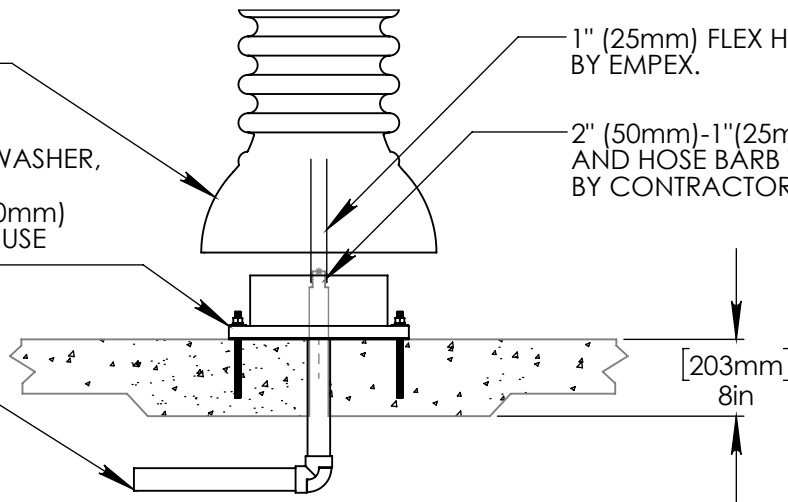
LOWER FLANGE COVER AFTER TOY IS INSTALLED.

STAINLESS STEEL (316)  
5/8" (16mm) THREADED ROD, WASHER,  
LOCK WASHER, & NUT.  
THREADED ROD LENGTH 9" (230mm)  
WITH 6" (150mm) EMBEDMENT. USE  
MINIMUM 6 ANCHORS.

2" (50mm) SCH 40 PVC  
WATERFEED TO BE EXTENDED  
8" (200mm) ABOVE SLAB.

1" (25mm) FLEX HOSE PROVIDED  
BY EMPEX.

2" (50mm)-1" (25mm) FITTING  
AND HOSE BARB TO BE SUPPLIED  
BY CONTRACTOR.



Notes: Overall dimensions of toys are approximate.

© EMPEX WATERTOYS



**WATER SUPPLY**

30 gpm @ 25 psi  
1.89 L/S @ 17.5m

**AQUACERES**

**AG106**

12/20/2018

SCALE:  
1:40

Sheet  
1 of 1