

NOTES:

- (1) PURGE ALL WATER SUPPLY LINES TO REMOVE SOLIDS PRIOR TO TOY INSTALLATION.
- (2) PROVIDE ELECTRICAL BOND WITH POOL REBAR.
- (3) INSTALL ALL WATER TOYS PLUMB AND LEVEL.
- (4) PROVIDE STRAINER UPSTREAM OF TOY WITH MAX 1/32" (0.8mm) PERFORATIONS.

A

A

B

B

C

C

D

D

E

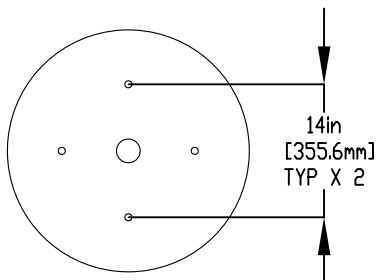
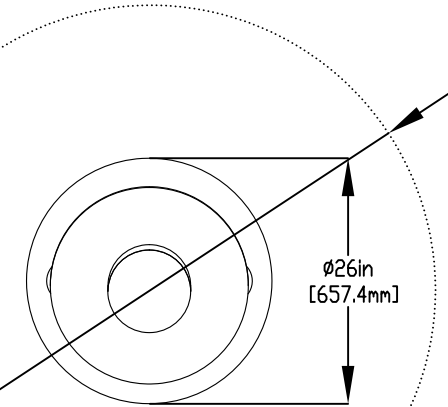
E

F

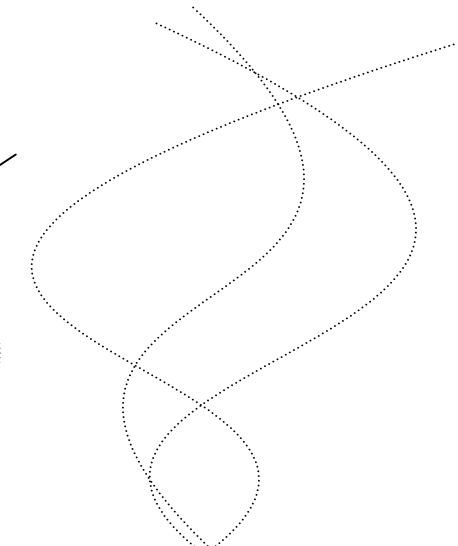
F

Ø60in [Ø1524.1mm] SPRAY DIAMETER

Ø26in [657.4mm]

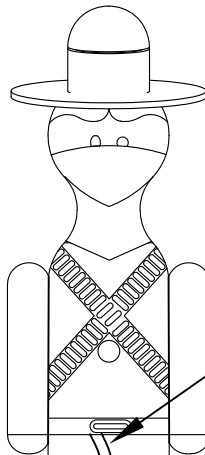


FLANGE DETAIL



Push Diverter

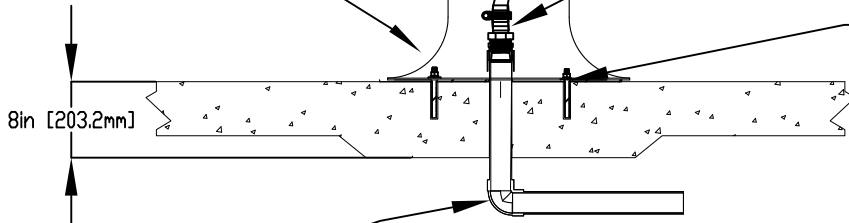
60in [1525.7mm]



1' (25mm) FLEX HOSE PROVIDED BY EMPEX.

LOWER TOY INTO MOUNTED FLARE TO FINISH INSTALL.

2' (50mm) COUPLING  
2' (50mm) - 1' (25mm) REDUCER  
1' (25mm) HOSE BARB W/SS CLAMP TO BE PROVIDED BY CONTRACTOR



1/2" (13mm) X 8" (203mm) 316SS THREADED ROD, C/W FENDER WASHER LOCKWASHER & NUT (X4) MINIMUM 6" (152mm) EMBEDMENT, EPOXY SET ANCHOR ADHESIVE TO BE PROVIDED BY CONTRACTOR

2" (50mm) PVC SCH 40 WATER FEED.

8in [203.2mm]



Notes: Overall dimensions of toys are approximate.

© EMPEX WATERTOYS

WATER SUPPLY  
30 gpm @ 25 psi  
1.89L/S @17.5m

AQUATOT BANDIT

AT112

01/04/2020

SCALE:

Sheet 1 of 1