

1

2

3

4

NOTES:

- (1) PURGE ALL WATER SUPPLY LINES TO REMOVE SOLIDS PRIOR TO TOY INSTALLATION.
- (2) PROVIDE ELECTRICAL BOND WITH POOL REBAR.
- (3) INSTALL ALL WATER TOYS PLUMB AND LEVEL.
- (4) PROVIDE STRAINER UPSTREAM OF TOY WITH MAX 1/32" (0.8mm) PERFORATIONS.

A

B

C

D

E

F

A

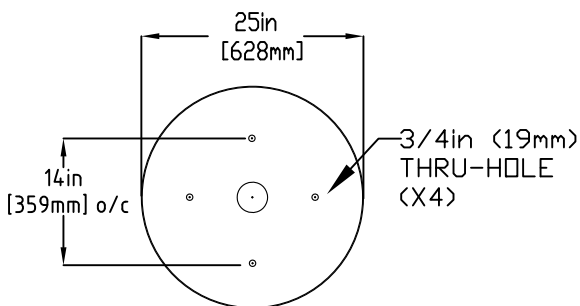
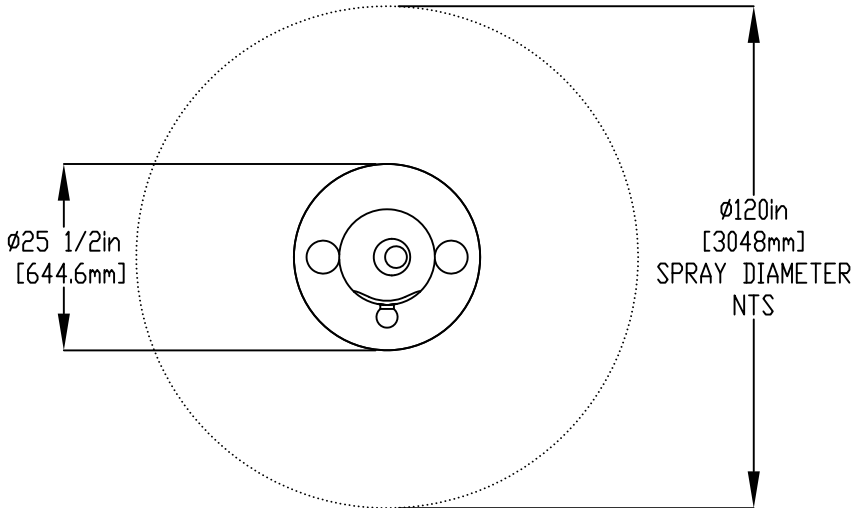
B

C

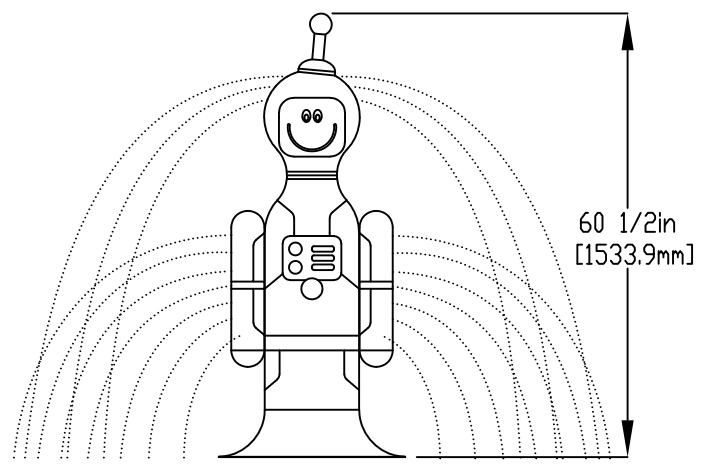
D

E

F



MOUNTING PLATE DETAIL



INSTALL DETAILS

1. BOLT FLARED BASE TO SLAB
2. MAKE PLUMBING CONNECTION
3. LOWER TOY AND BOLT TO INSERT

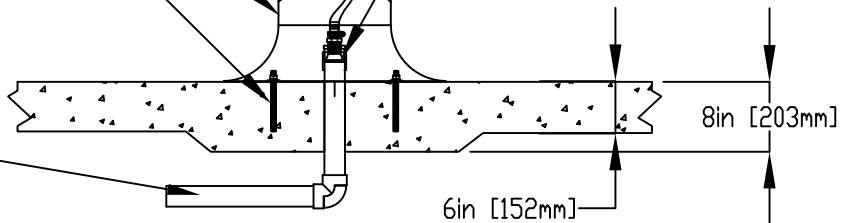
1/2" (13mm) x 8" (203MM) 316SS THREADED ROD, C/W FENDER WASHER, LOCK WASHER, & NUT. (X4) MINIMUM 6" (152mm) EMBEDMENT, EPOXY SET ANCHOR ADHESIVE TO BE PROVIDED BY CONTRACTOR

WATERFEED
2" (50mm) PVC SCH 40 PIPE
EXTEND 6" (152mm) ABOVE SLAB

PUSH DIVERTER

1" (25mm) FLEX HOSE PROVIDED BY EMPEX.

2" (50mm) COUPLING
2" (50mm)-1" (25mm) REDUCER
1" (25mm) HOSEBARB W/SS CLAMP TO BE PROVIDED BY CONTRACTOR



Notes: Overall dimensions of toys are approximate.

© EMPEX WATERTOYS

WATER SUPPLY

30 gpm @ 25 psi
1.89L/S @17.5m

AQUATOT ASTRONAUT

AT122

1/2/2019

SCALE:

Sheet 1 of 1

1

2

3

4