

1

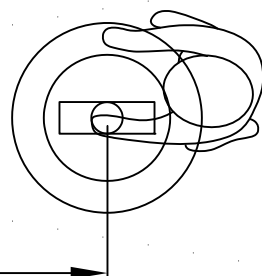
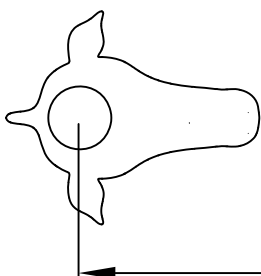
2

3

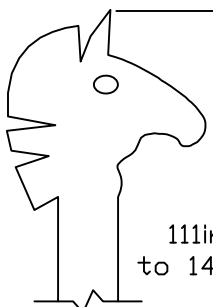
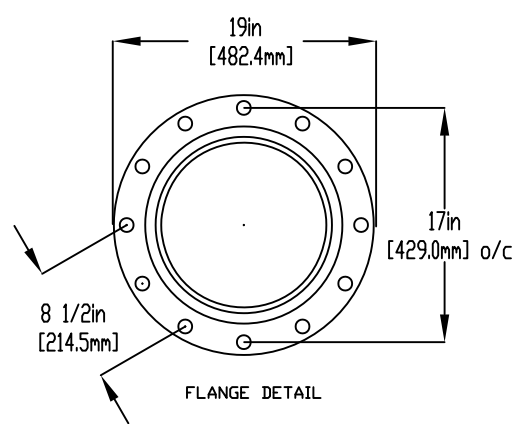
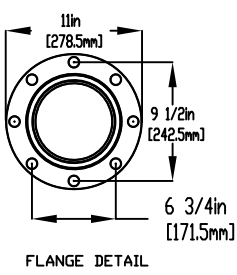
4

NOTES:

- (1) PURGE ALL WATER SUPPLY LINES TO REMOVE SOLIDS PRIOR TO TOY INSTALLATION.
- (2) PROVIDE ELECTRICAL BOND WITH POOL REBAR.
- (3) INSTALL ALL WATER TOYS PLUMB AND LEVEL.
- (4) PROVIDE STRAINER UPSTREAM OF TOY WITH MAX 1/32" (0.8mm) PERFORATIONS.

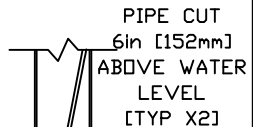


120in [3048mm]  
to 144in [3657.6mm]



11in (2819.4MM)  
to 141IN [3581.4mm]

STAINLESS STEEL GRADE 316  
5/8in (16mm) THREADED ROD,  
FENDER WASHER, LOCK WASHER & NUT.  
SUGGESTED THREADED ROD LENGTH  
7in (180mm) WITH MIN 4in (100mm)  
EMBEDMENT. TO BE PROVIDED BY  
CONTRACTOR [TYP X2]



6in [152mm]  
TO 12in [305mm]  
MAX DEPTH

LOWER FLANGE COVERS  
AFTER TOY IS INSTALLED  
[TYP X2]

8in [203.2mm]  
THICKNESS

2in (50mm) SCH 40 PVC  
CONDUIT

3/8in (9.5mm)  
POLYURETHANE TUBING  
PROVIDED BY EMPEX

Notes: Overall dimensions of toys are approximate.  
Approximate Weight A: TBD

© EMPEX WATERTOYS



WATER SUPPLY  
N/A

KIDSPUMPZ-WESTERN

AW977

01/05/2020

SCALE:

Sheet  
1 of 1

1

2

3

4