

1

2

3

4

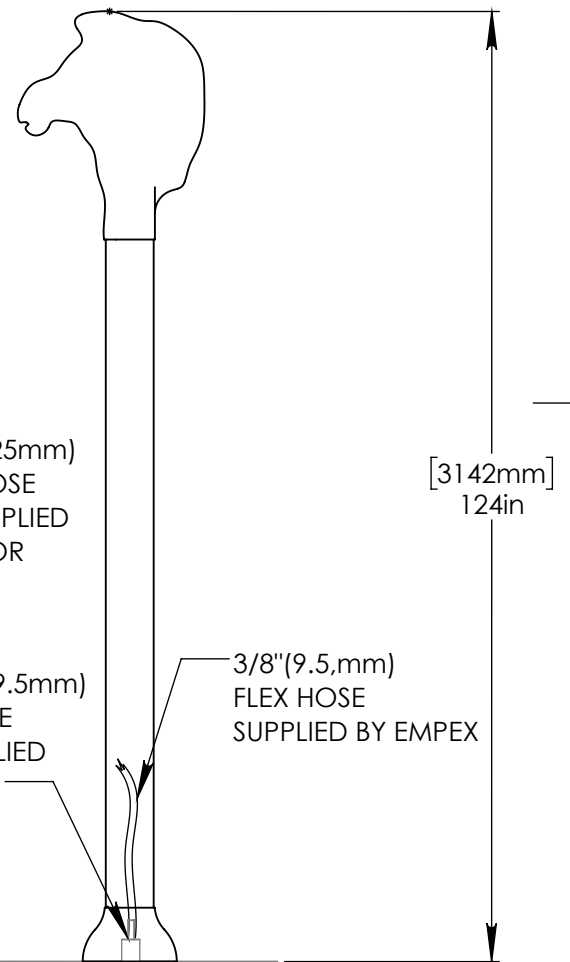
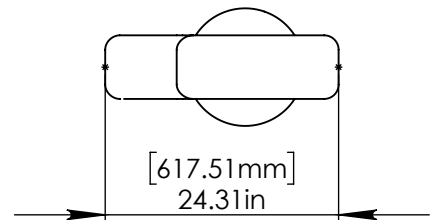
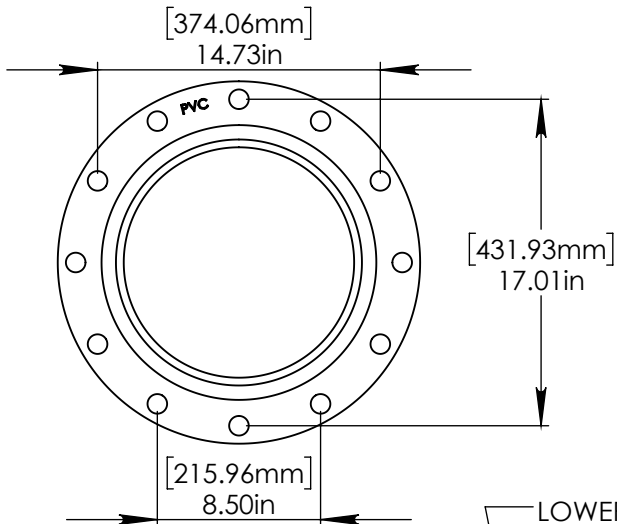
## NOTES:

(1) PURGE ALL WATER SUPPLY LINES TO REMOVE SOLIDS PRIOR TO TOY INSTALLATION.

(2) PROVIDE ELECTRICAL BOND WITH POOL REBAR.

(3) INSTALL ALL WATER TOYS PLUMB AND LEVEL.

(4) PROVIDE STRAINER UPSTREAM OF TOY WITH MAX  $1\frac{1}{32}$ " (0.8mm) PERFORATIONS.



STAINLESS STEEL GRADE 316  
5/8" (16mm)  
THREADED ROD,  
FENDER WASHER,  
LOCK WASHER & NUT.  
SUGGESTED THREADED ROD LENGTH  
7" (180mm) WITH MIN 4" (100mm)  
EMBEDMENT.

[206mm]  
8in  
THICKNESS

2" (50mm) SCH 40 PVC  
WATERFEED TO BE EXTENDED  
4" (100mm) ABOVE SLAB

2" (50mm)  
WATERFEED TO  
FEATURE



Notes: Overall dimensions of toys are approximate.

© EMPEX WATERTOYS

### WATER SUPPLY

15 gpm @ 25 psi  
1 L/S @ 17.5m

## KIDSPUMPZ WESTERN

**AW977P**

5/17/2017

SCALE:  
1:50

Sheet  
1 of 1

1

2

3

4