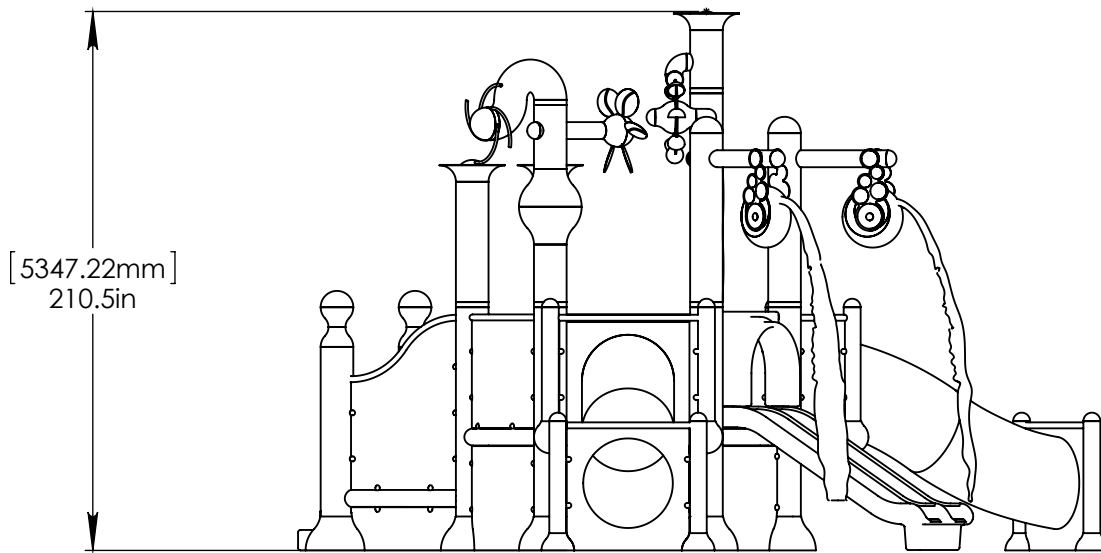
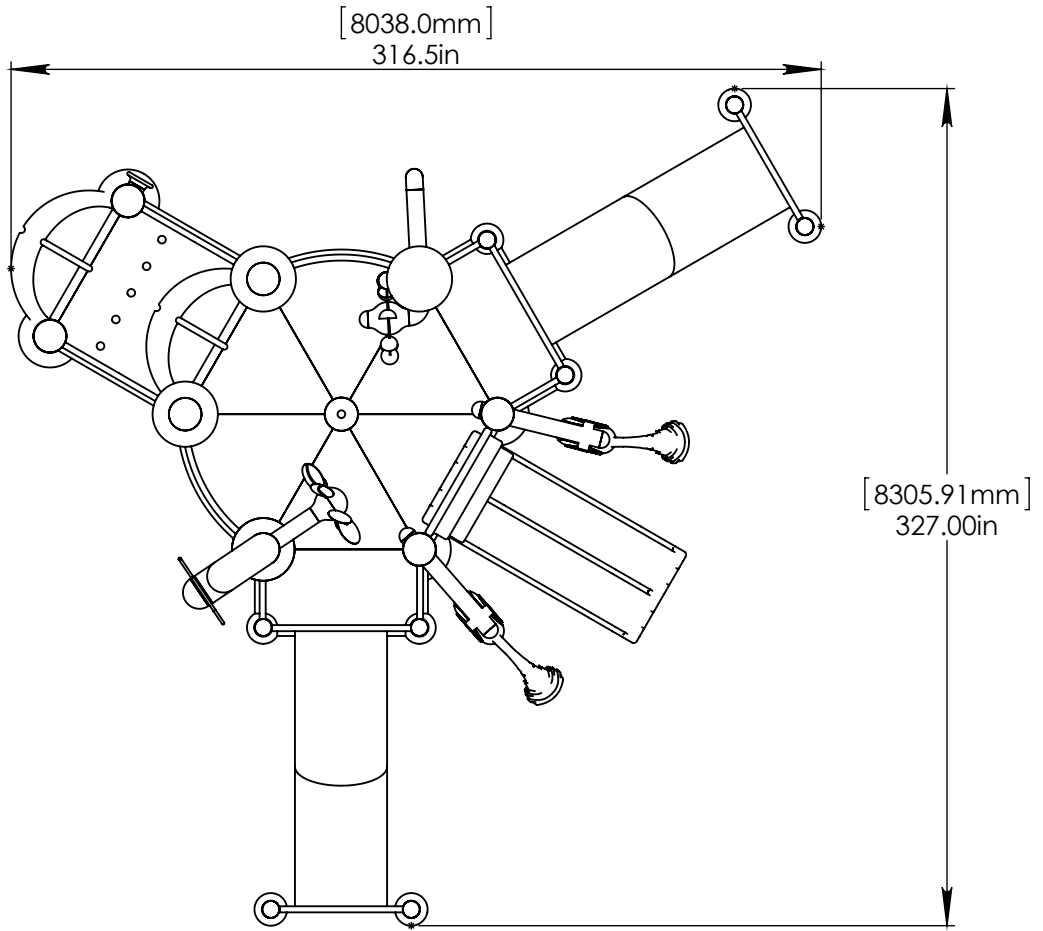


NOTES:

- (1) PROVIDE ELECTRICAL BOND WITH POOL REBAR.
- (2) 2 PART EPOXY MAY BE USED IN LIEU OF INSERT ANCHOR.
- (3) PURGE ALL WATER SUPPLY LINES TO REMOVE SOLIDS PRIOR TO TOY INSTALLATION.
- (4) INSTALL ALL WATER TOYS PLUMB AND LEVEL.
- (5) PROVIDE STRAINER UPSTREAM OF TOY WITH MAX 1#32" (0.8mm) PERFORATIONS.



Notes : (1) Dual Dimensions
(2) Outer dimensions of toys are approximate.

© EMPEX WATER TOYS
JULY 16, 2012

Scale
N.T.S.

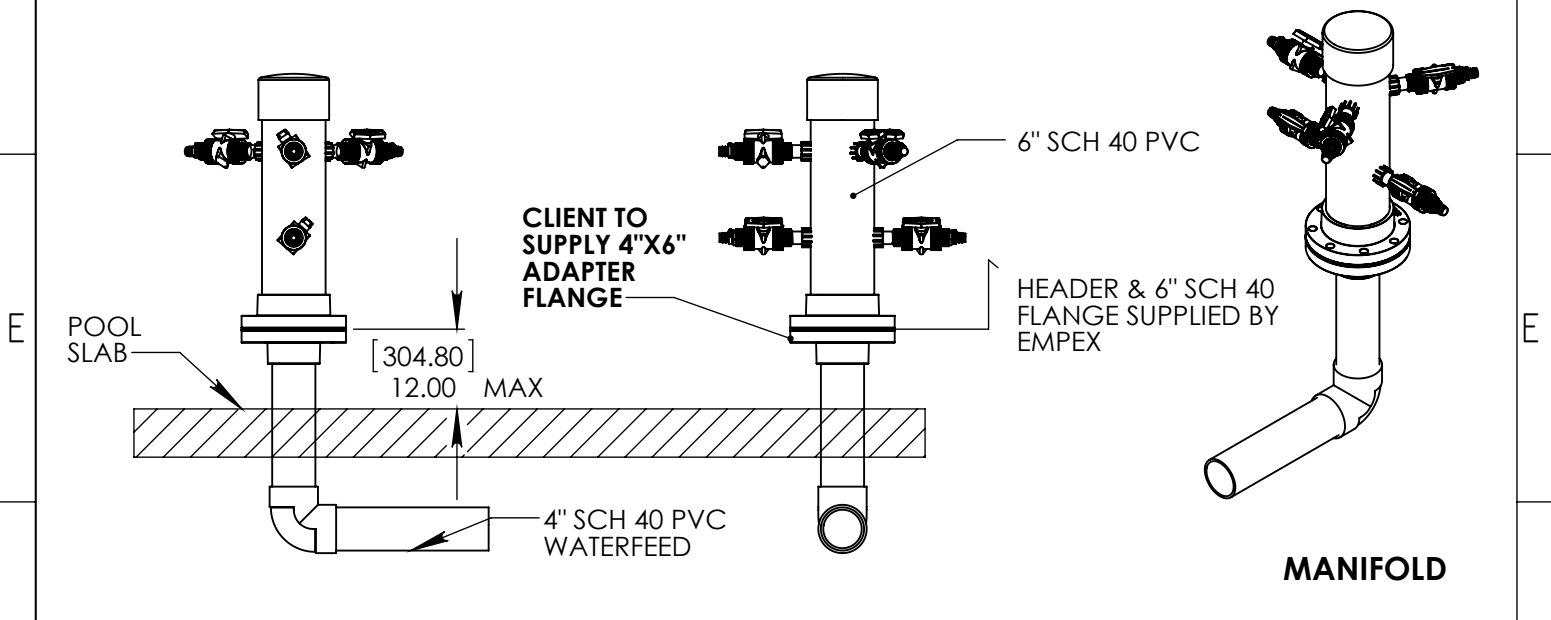
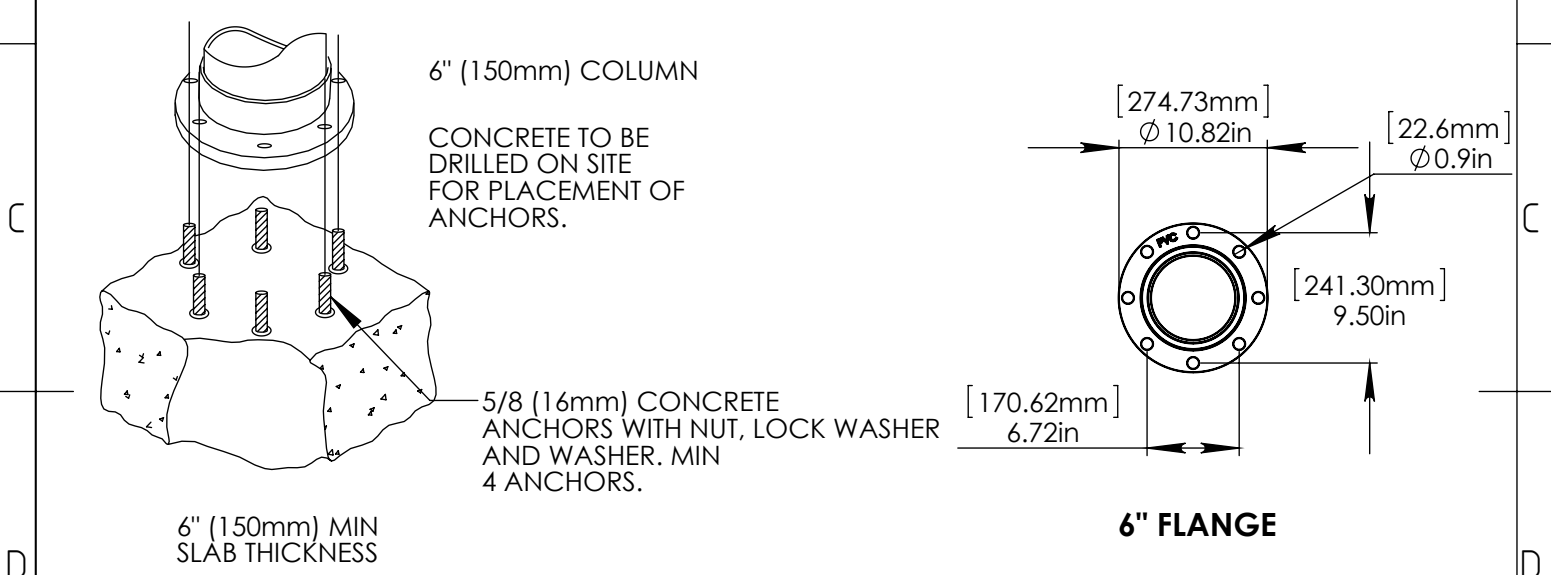
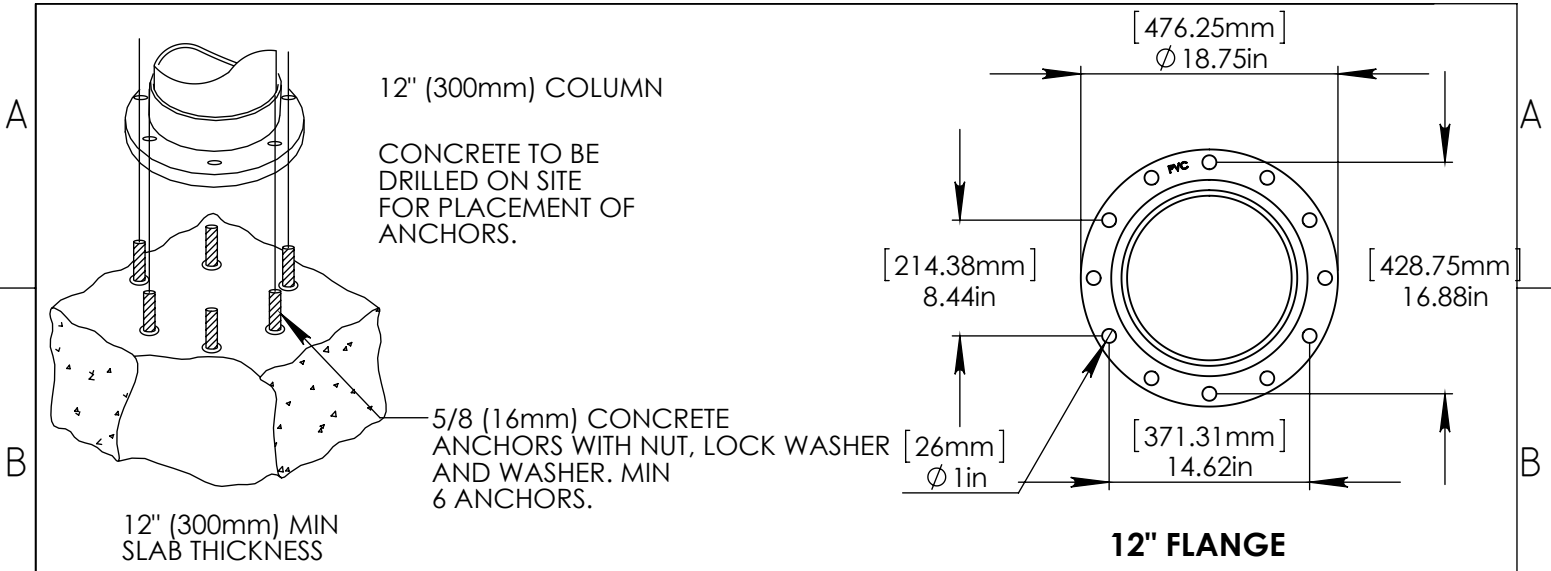
WATER SUPPLY
250 gpm @ 25 psi
15.6L/S @17.5m


AQUADEK

C410-3S

Edition

Sheet
1/2



	Notes : (1) Dual Dimensions (2) Outer dimensions of toys are approximate.	© EMPEX WATER TOYS JULY 16, 2012	Scale N.T.S.
	WATER SUPPLY 250 gpm @ 25 psi 15.6L/S @17.5m	AQUADEK C410-3S	