

NOTES:

- (1) PROVIDE ELECTRICAL BOND WITH POOL REBAR.
- (2) 2 PART EPOXY MAY BE USED IN LIEU OF INSERT ANCHOR.
- (3) PURGE ALL WATER SUPPLY LINES TO REMOVE SOLIDS PRIOR TO TOY INSTALLATION.
- (4) INSTALL ALL WATER TOYS PLUMB AND LEVEL.
- (5) PROVIDE STRAINER UPSTREAM OF TOY WITH MAX 1#32" (0.8mm) PERFORATIONS.

A

B

C

D

E

F

A

B

C

D

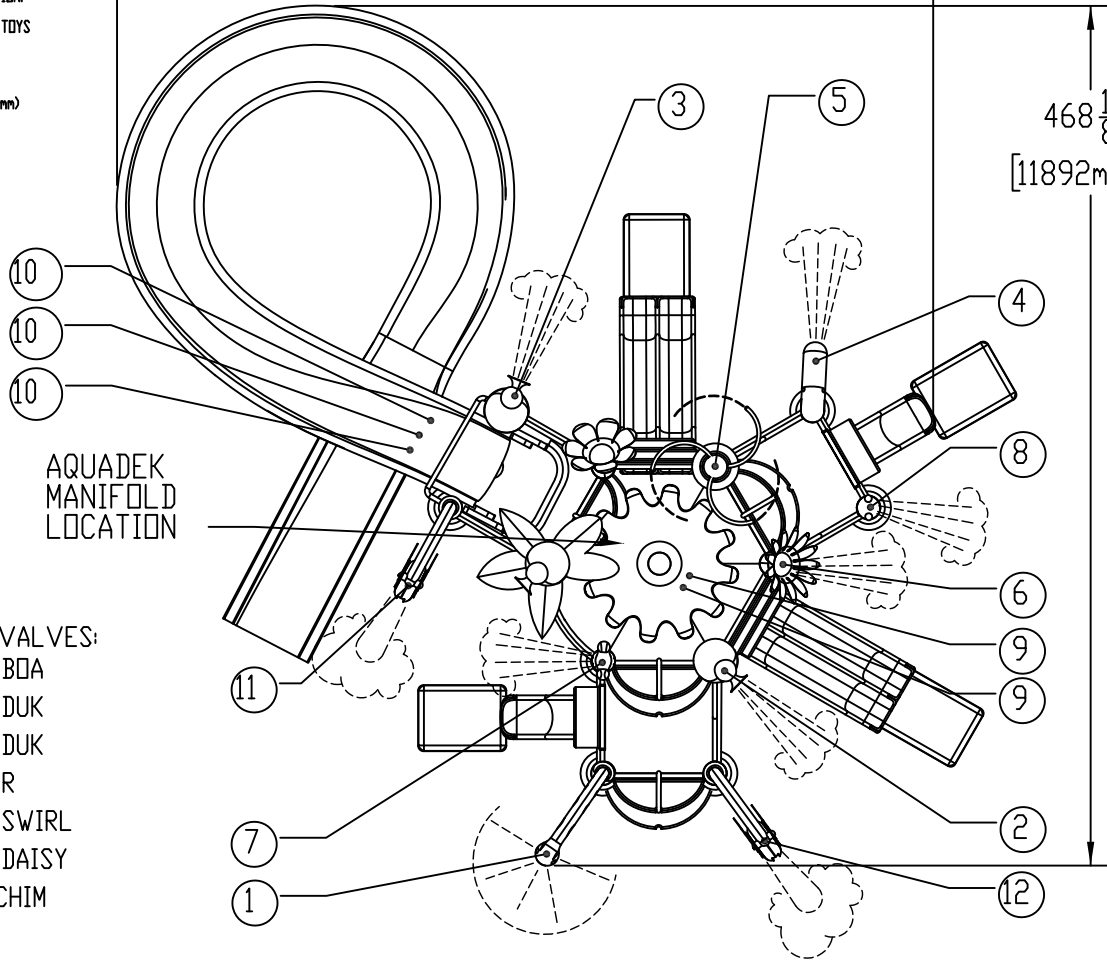
E

F

444  $\frac{1}{2}$ "  
[11289mm]

468  $\frac{1}{8}$ "  
[11892mm]

281  $\frac{1}{8}$ "  
[7140mm]



(8) 1" (25mm) VALVES:

- ① AQUABOA
- ② AQUADUK
- ③ AQUADUK
- ④ GATOR
- ⑤ AQUASWIRL
- ⑥ AQUADAISY
- ⑦ AQUACHIM
- ⑧ FROG

(2) 2" (51mm) VALVES:

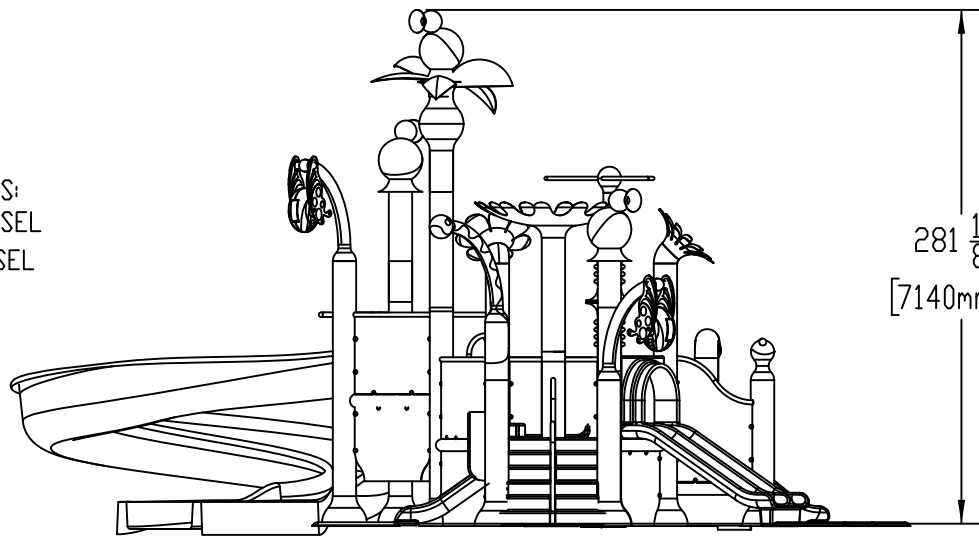
- ⑨ AQUAFOLD

(3) 2" (51mm) VALVES:

- ⑩ SLIDE

(2) 1/2" (38mm) VALVES:

- ⑪ TIPPING VESSEL
- ⑫ TIPPING VESSEL



Notes: Overall dimensions of toys are approximate.  
Approximate Weight: 5,450lbs (2,472.1kgs)

© EMPEX WATERTOYS



WATER SUPPLY

500gpm @ 25 psi  
31L/S @17.5m

AQUADEK

C610-TR-1S

29/09/2021

SCALE:

Sheet 1 of 2

MANIFOLD PROVIDED BY EMPEX

- (8) 1" (25mm) VALVES:
- ① AQUABOIA
  - ② AQUADUK
  - ③ AQUADUK
  - ④ GATOR
  - ⑤ AQUASWIRL
  - ⑥ AQUADAISY
  - ⑦ AQUACHIM
  - ⑧ FROG

- (2) 2" (51mm) VALVES:
- ⑨ AQUAFOLD
- (3) 2" (51mm) VALVES:
- ⑩ SLIDE
- (2) 1/2" (38mm) VALVES:
- ⑪ TIPPING VESSEL
  - ⑫ TIPPING VESSEL

A

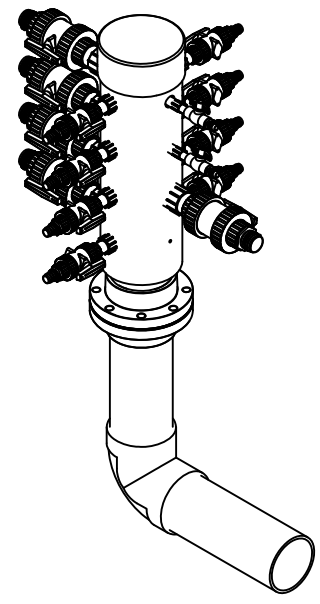
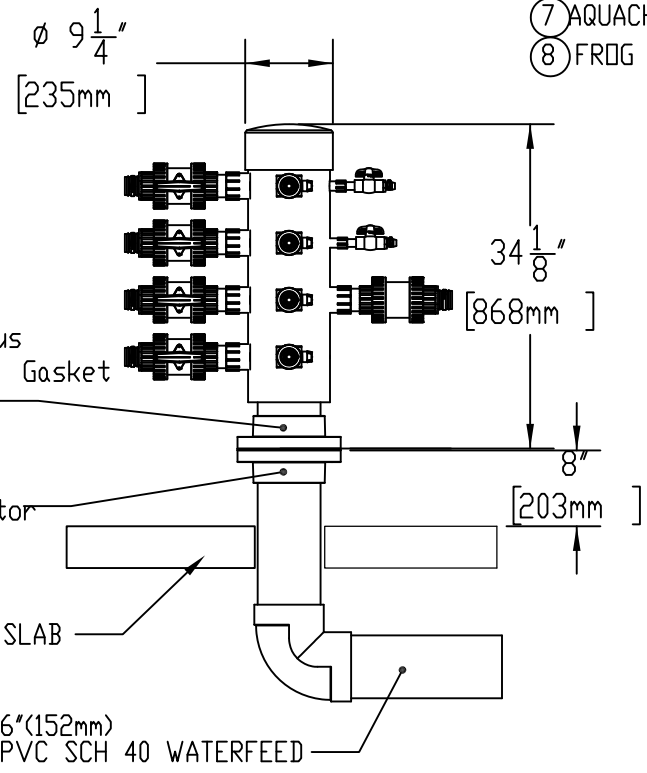
A

B

B

C

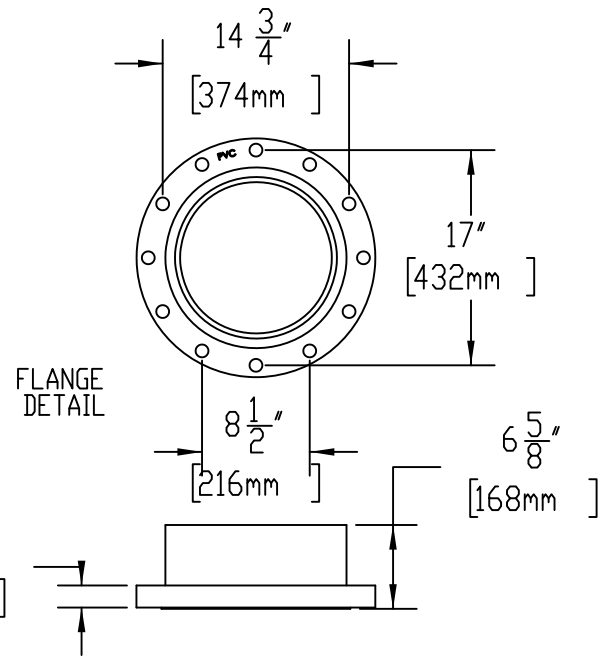
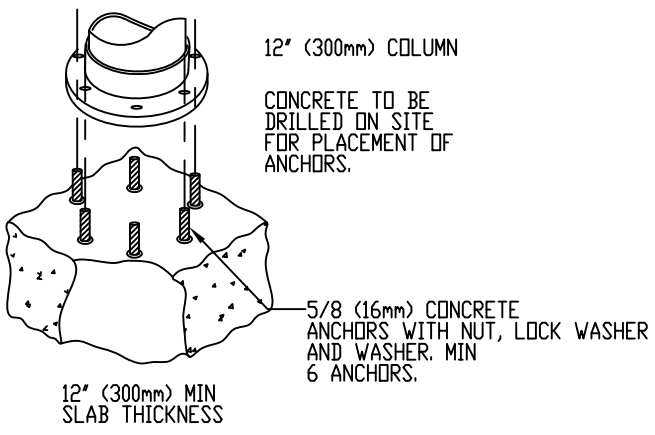
C



D

D

COLUMN INSTALLATION DETAILS



F

F



Notes: Overall dimensions of toys are approximate.  
 Approximate Weight: 5,450lbs (2,472.1kgs)

© EMPEX WATERTOYS

WATER SUPPLY

500gpm @ 25 psi  
 31L/S @17.5m

AQUADEK

C610-TR-1S

29/09/2021

SCALE:

Sheet 2 of 2