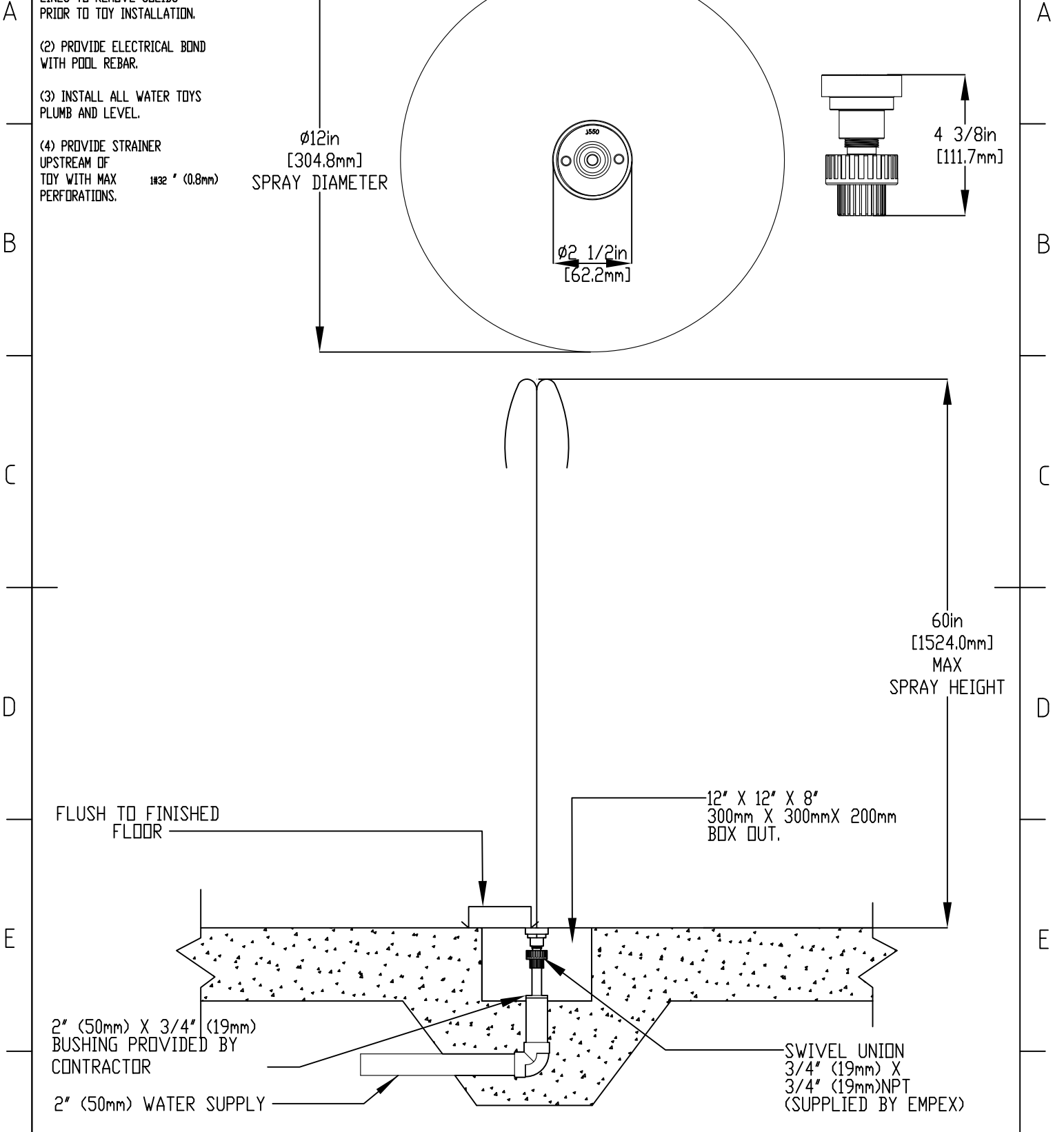
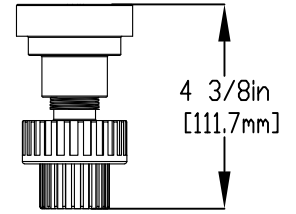
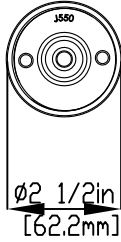



NOTES:

- (1) PURGE ALL WATER SUPPLY LINES TO REMOVE SOLIDS PRIOR TO TOY INSTALLATION.
- (2) PROVIDE ELECTRICAL BOND WITH POOL REBAR.
- (3) INSTALL ALL WATER TOYS PLUMB AND LEVEL.
- (4) PROVIDE STRAINER UPSTREAM OF TOY WITH MAX PERFORATIONS.

Ø12in
[304.8mm]
SPRAY DIAMETER



	Notes: Overall dimensions of toys are approximate. Approximate Weight: 1 lbs / 0.5kgs		© EMPEX WATERTOYS		
	<u>WATER SUPPLY</u> 7 GPM @ 10 PSI 0.44 L/S @ 7 M		VERTICAL JET		
	J330	18/12/2020	SCALE:	Sheet 1 of 1	