

1

2

3

4

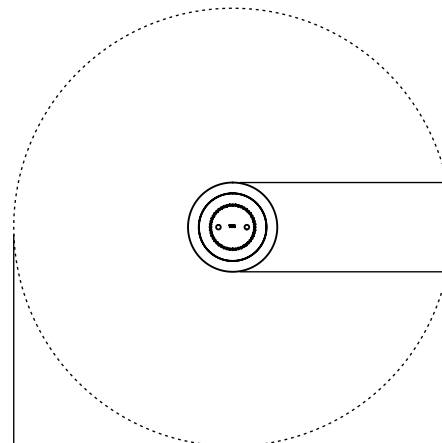
NOTES:

(1) PURGE ALL WATER SUPPLY LINES TO REMOVE SOLIDS PRIOR TO TOY INSTALLATION.

(2) PROVIDE ELECTRICAL BOND WITH POOL REBAR.

(3) INSTALL ALL WATER TOYS PLUMB AND LEVEL.

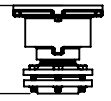
(4) PROVIDE STRAINER UPSTREAM OF TOY WITH MAX 1#32" (0.8mm) PERFORATIONS.



[2336mm]
Ø 92in
SPRAY DIAMETER NTS

[154mm]
Ø 6in

[152mm]
6in



A

A

B

B

C

C

D

D

E

E

F

F

FLUSH TO FINISHED FLOOR

12" (300mm)
X 12" (300mm)
X 10" (250mm)
DEEP BOX OUT

[1524mm]
60"

2" (50mm) WATER SUPPLY

2" (50mm) SWIVEL UNION FOR LEVELING PURPOSES.



Notes: Overall dimensions of toys are approximate.

© EMPEX WATERTOYS

WATER SUPPLY

24 gpm @ 10 psi
1.5L/S @7m

AQUAWEAVE

J900

4/6/2016

SCALE:
1:13

Sheet
1 of 1

1

2

3

4