

1

2

3

4

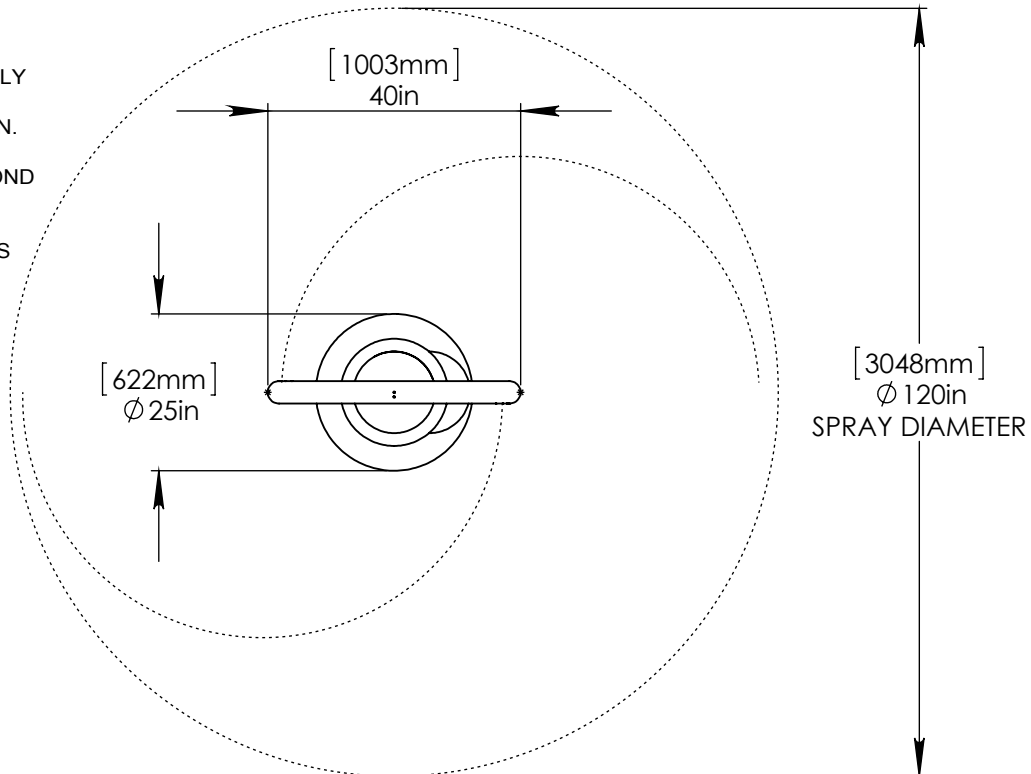
NOTES:

(1) PURGE ALL WATER SUPPLY LINES TO REMOVE SOLIDS PRIOR TO TOY INSTALLATION.

(2) PROVIDE ELECTRICAL BOND WITH POOL REBAR.

(3) INSTALL ALL WATER TOYS PLUMB AND LEVEL.

(4) PROVIDE STRAINER UPSTREAM OF TOY WITH MAX 1#32" (0.8mm) PERFORATIONS.



A

A

B

B

C

C

D

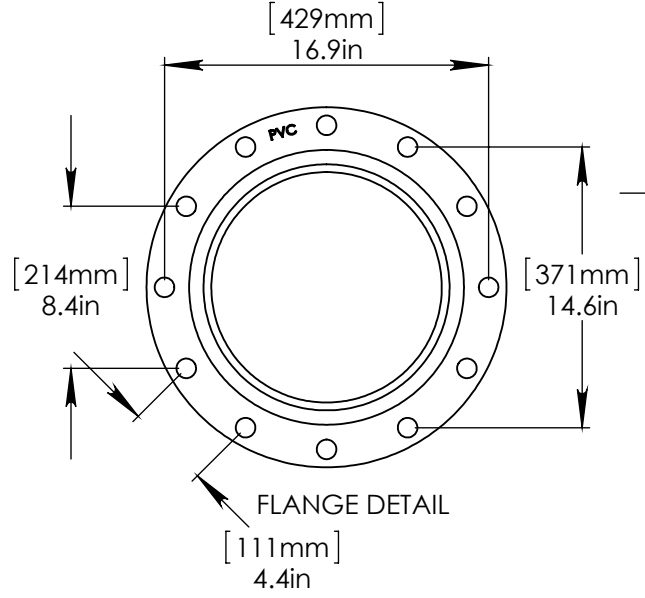
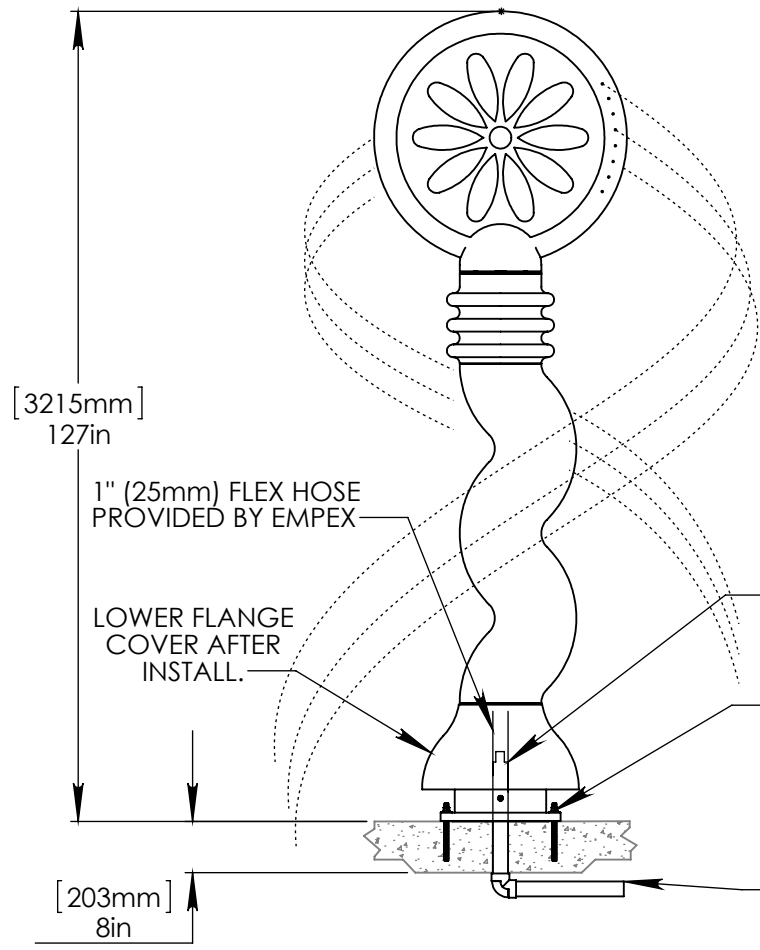
D

E

E

F

F



1" (25mm) FLEX HOSE PROVIDED BY EMPEX

LOWER FLANGE COVER AFTER INSTALL.

2" (50mm) TO 1" (25mm) REDUCER TO BE PROVIDED BY CONTRACTOR.

STAINLESS STEEL (316) Φ 5/8" (16mm) THREADED ROD, WASHER, LOCK WASHER, & NUT. 9" (230mm) THREADED ROD LENGTH WITH 6" (150mm) EMBEDMENT.

2" (50mm) PVC SCH 40 WATERFEED EXTENDED 8" (200mm) ABOVE SLAB.

Notes: Overall dimensions of toys are approximate.

© EMPEX WATERTOYS



WATER SUPPLY
 30 gpm @ 25 psi
 1.89L/S @ 17.5m

AQUATWIRL

K101

9/17/2014

SCALE:
1:30

Sheet
1 of 1

1

2

3

4