

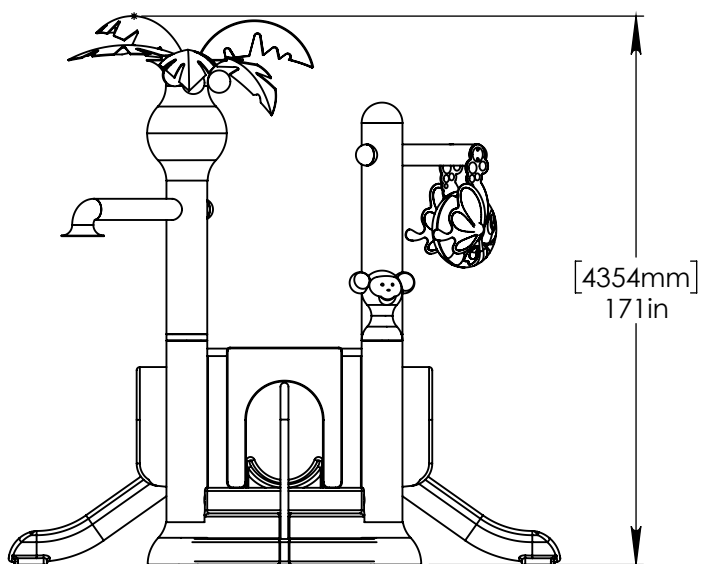
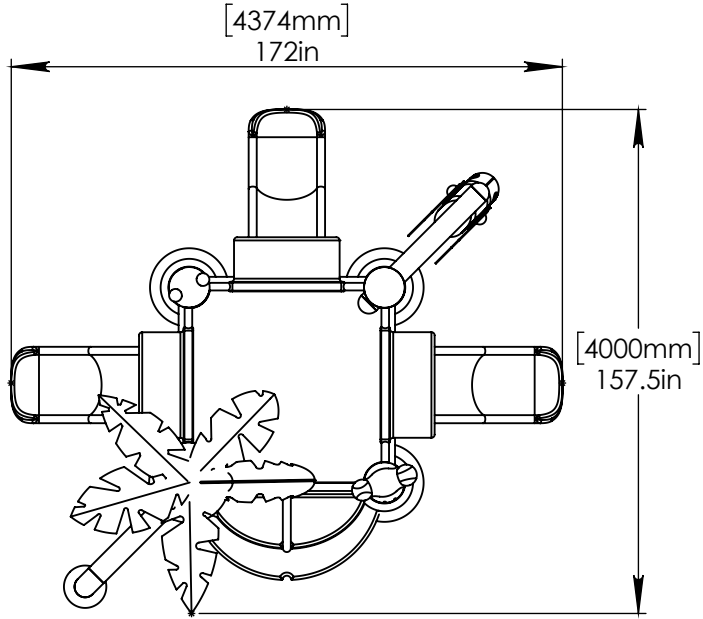
NOTES:

(1) PURGE ALL WATER SUPPLY LINES TO REMOVE SOLIDS PRIOR TO TOY INSTALLATION.

(2) PROVIDE ELECTRICAL BOND WITH POOL REBAR.

(3) INSTALL ALL WATER TOYS PLUMB AND LEVEL.

(4) PROVIDE STRAINER UPSTREAM OF TOY WITH MAX 1/32" (0.8mm) PERFORATIONS.



Notes: Overall dimensions of toys are approximate.

© EMPEX WATERTOYS

WATER SUPPLY
 100 gpm @ 25 psi
 6.3 L/S @17.5m

AQUADEK

T210-TR-3S

7/22/2016

SCALE:
1:60

Sheet
1 of 2

HEADER PROVIDED BY EMPEX

4"-6" (100mm-150mm) FLANGE NOT PROVIDED BY EMPEX.

POOL SLAB



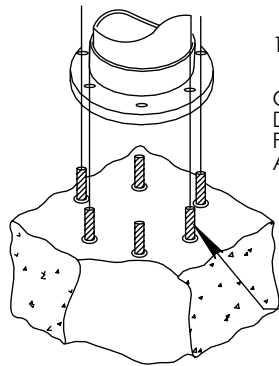
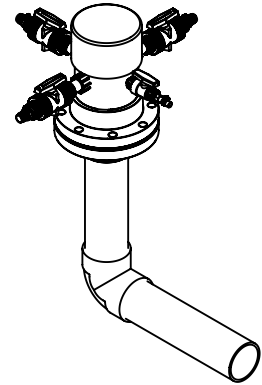
[524mm] 21in

[203mm] 8in

4" (100mm) PVC SCH 40 WATERFEED.

(3) 1" (25mm) VALVES: AQUASHOWER (2) FINIALS

(1) 1/2" (13mm) VALVE: AQUADUNK

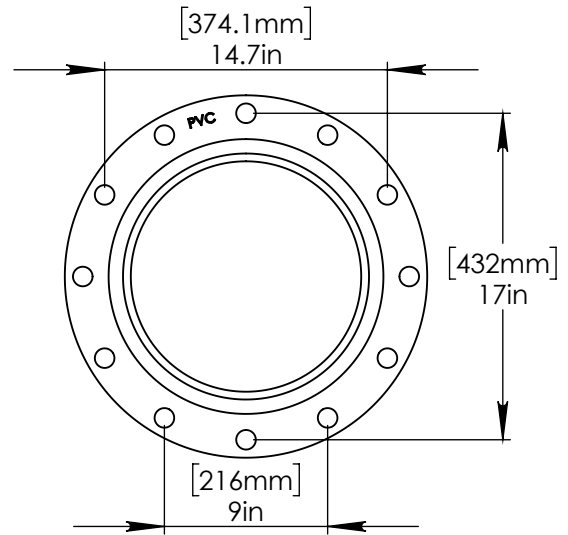


12" (300mm) COLUMN

CONCRETE TO BE DRILLED ON SITE FOR PLACEMENT OF ANCHORS.

5/8 (16mm) CONCRETE ANCHORS WITH NUT, LOCK WASHER AND WASHER. MIN 6 ANCHORS.

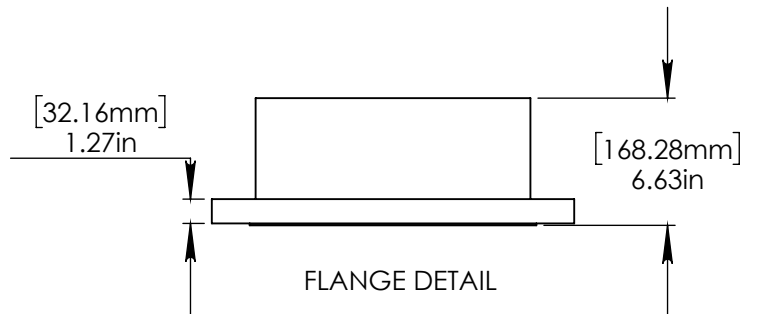
12" (300mm) MIN SLAB THICKNESS



[374.1mm] 14.7in

[432mm] 17in

[216mm] 9in



[32.16mm] 1.27in

[168.28mm] 6.63in

FLANGE DETAIL



Notes: Overall dimensions of toys are approximate.

© EMPEX WATERTOYS

WATER SUPPLY
100 gpm @ 25 psi
6.3 L/S @17.5m

AQUADEK

T210-TR-3S

7/22/2016

SCALE:
1:10

Sheet
2 of 2