

NOTES:

***RECOMMENDED TO BE
INSTALLED ON LEVELLED
AREAS ONLY.**

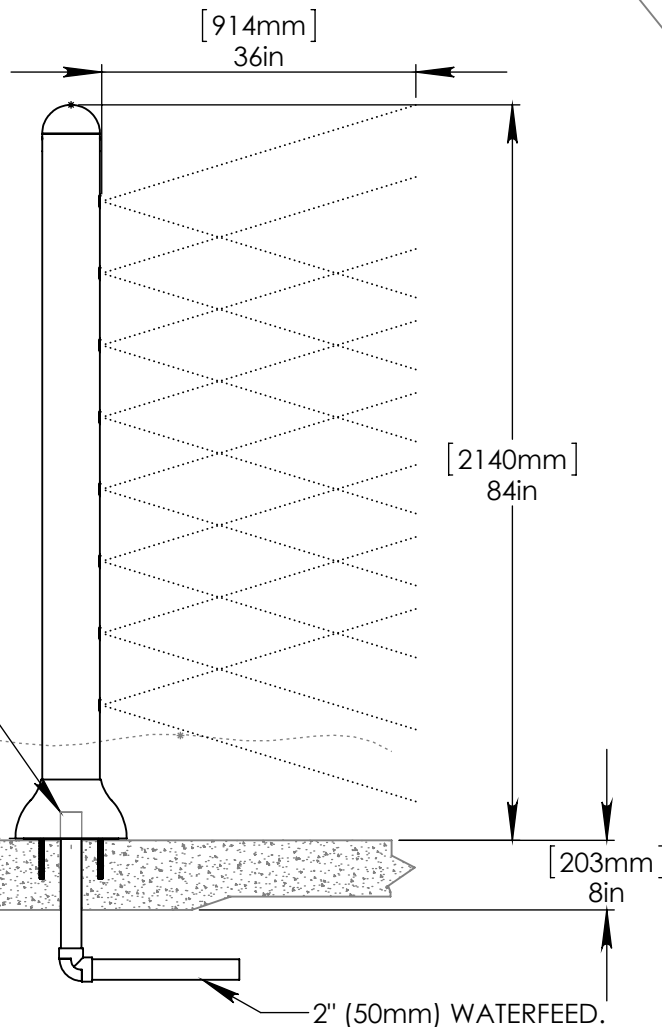
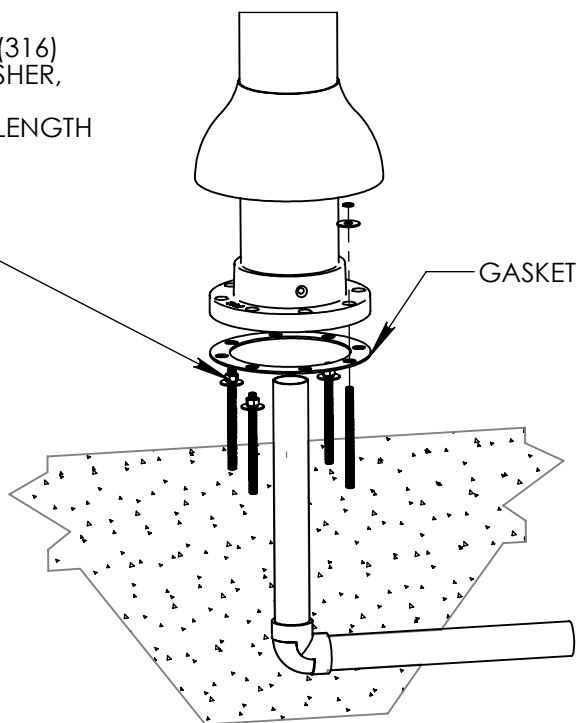
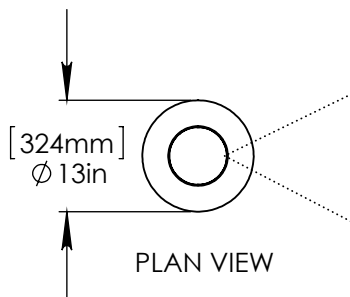
(1) PURGE ALL WATER SUPPLY
LINES TO REMOVE SOLIDS
PRIOR TO TOY INSTALLATION.

(2) PROVIDE ELECTRICAL BOND
WITH POOL REBAR.

(3) INSTALL ALL WATER TOYS
PLUMB AND LEVEL.

(4) PROVIDE STRAINER
UPSTREAM OF
TOY WITH MAX 1#32" (0.8mm)
PERFORATIONS.

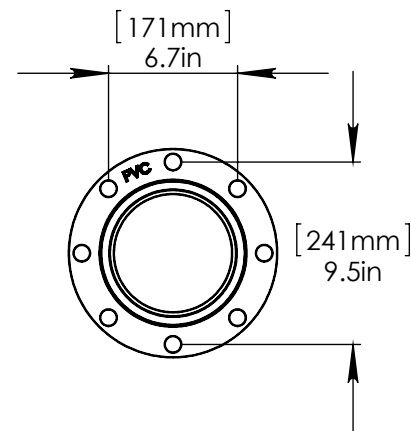
1/2" (13mm) STAINLESS STEEL (316)
THREADED ROD, FENDER WASHER,
LOCK WASHER & NUT.
SUGGESTED THREADED ROD LENGTH
9"(230mm) WITH 6" (150mm)
EMBEDMENT. USE MIN 4
ANCHORS.



EXTEND WATERFEED
MIN 3in (75mm) ABOVE
POOL SLAB.

12in (300mm) MAX
WATER DEPTH

FLANGE MOUNTING DETAIL



Notes: Overall dimensions of toys are approximate.

© EMPEX WATERTOYS



WATER SUPPLY

20 gpm @ 25 psi
1.3L/S @ 17.5m

AQUASPRITZ

T260

11/4/2014

SCALE:
1:22

Sheet
1 of 1