

1

2

3

4

## NOTES:

(1) PURGE ALL WATER SUPPLY LINES TO REMOVE SOLIDS PRIOR TO TOY INSTALLATION.

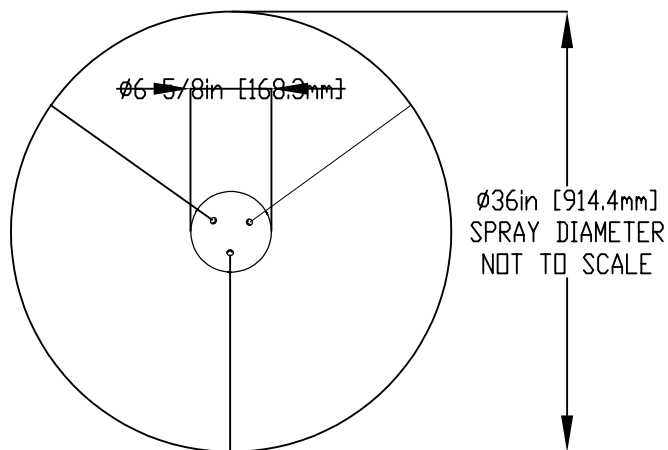
(2) PROVIDE ELECTRICAL BOND WITH POOL REBAR.

(3) INSTALL ALL WATER TOYS PLUMB AND LEVEL.

(4) PROVIDE STRAINER UPSTREAM OF TOY WITH MAX 1#32" (0.8mm) PERFORATIONS.

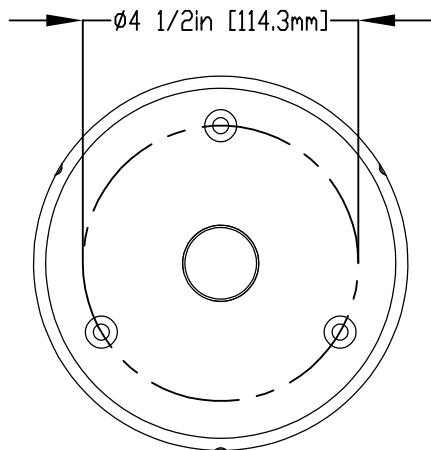
A

A



B

B



FLANGE DETAIL

16 7/8in [428.8mm]  
MAX SPRAY HEIGHT  
NOT TO SCALE

3 3/8in [84.1mm]

C

C

D

D

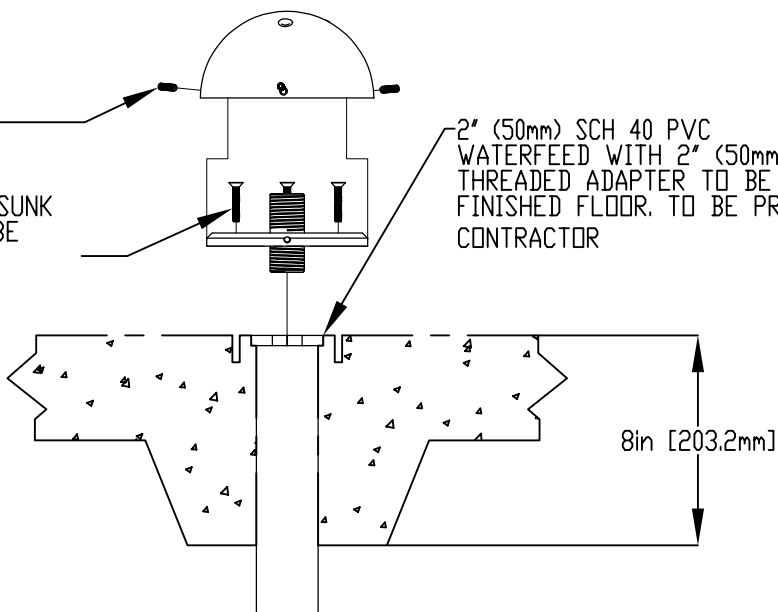
CONNECT TOY WITH SCREW WHEN BASE CONNECTION IS COMPLETED.

STAINLESS STEEL (GRADE 316)  
ø 1/4" (6mm) X 4" LONG COUNTERSUNK  
BOLT AND FEMALE ANCHORS TO BE  
PROVIDED BY CONTRACTOR

2" (50mm) SCH 40 PVC  
WATERFEED WITH 2" (50mm)- 1" (25mm)  
THREADED ADAPTER TO BE FLUSH WITH  
FINISHED FLOOR. TO BE PROVIDED BY  
CONTRACTOR

E

E



F

F



Notes: Overall dimensions of toys are approximate.  
Approximate Weight: 2lbs / 0.9kgs

© EMPEX WATERTOYS

## WATER SUPPLY

13.5 gpm @ 25 psi  
0.85L/S @17.5m

AQUABEAN

T262

23/03/2021

SCALE:

Sheet  
1 of 1

1

2

3

4