

## NOTES:

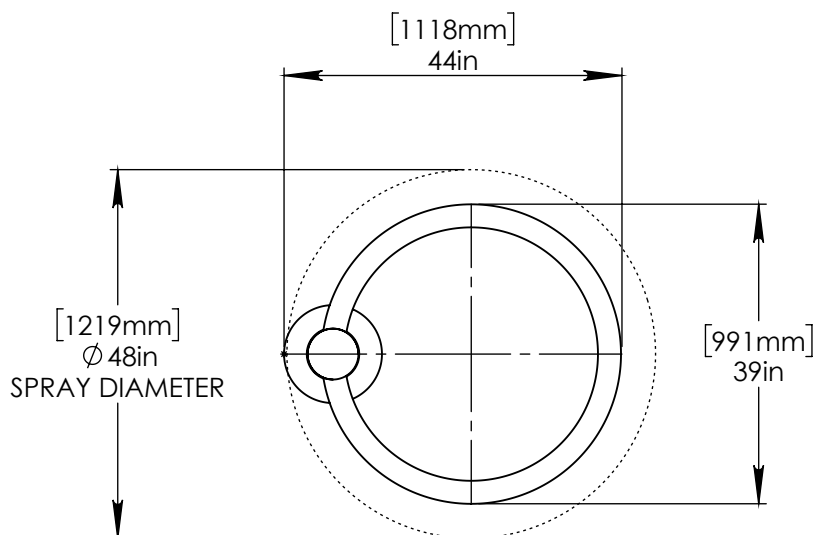
**\*RECOMMENDED TO BE  
INSTALLED ON LEVELLED  
AREAS ONLY.**

(1) PURGE ALL WATER SUPPLY  
LINES TO REMOVE SOLIDS  
PRIOR TO TOY INSTALLATION.

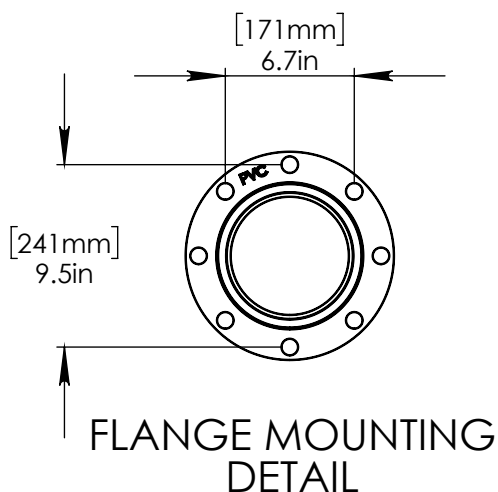
(2) PROVIDE ELECTRICAL BOND  
WITH POOL REBAR.

(3) INSTALL ALL WATER TOYS  
PLUMB AND LEVEL.

(4) PROVIDE STRAINER  
UPSTREAM OF  
TOY WITH MAX 1/32" (0.8mm)  
PERFORATIONS.



PLAN VIEW



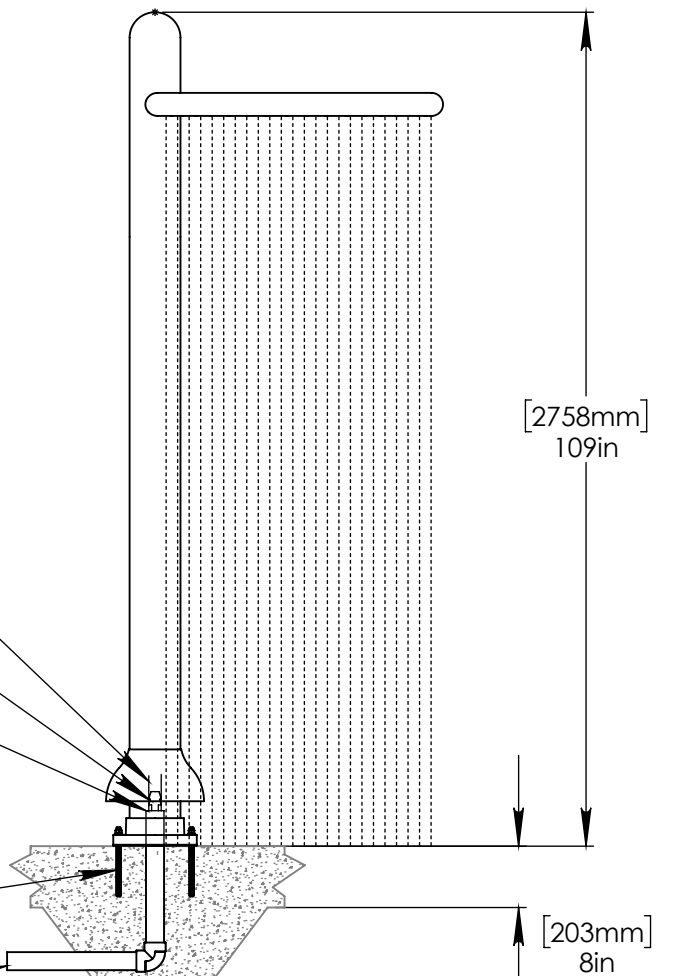
1" (25mm) FLEX HOSE  
PROVIDED BY EMPEX

2" (50mm) TO 1" (25mm)  
REDUCER AND HOSE BARB  
TO BE PROVIDED  
BY CONTRACTOR.

EXTEND WATERFEED  
MIN 8in (200mm) ABOVE  
POOL SLAB

1/2" (13mm) STAINLESS STEEL (316)  
THREADED ROD, FENDER WASHER,  
LOCK WASHER & NUT.  
SUGGESTED THREADED ROD LENGTH  
9" (230mm) WITH 6" (150mm)  
EMBEDMENT. USE MIN 4  
ANCHORS.

2" PVC-40  
WATERFEED



Notes: Overall dimensions of toys are approximate.

© EMPEX WATERTOYS

### WATER SUPPLY

30 gpm @ 25 psi  
1.89 L/S @ 17.5m

## AQUARING

**T265**

1/11/2019

SCALE:  
1:25

Sheet  
1 of 1