

1

2

3

4

NOTES:

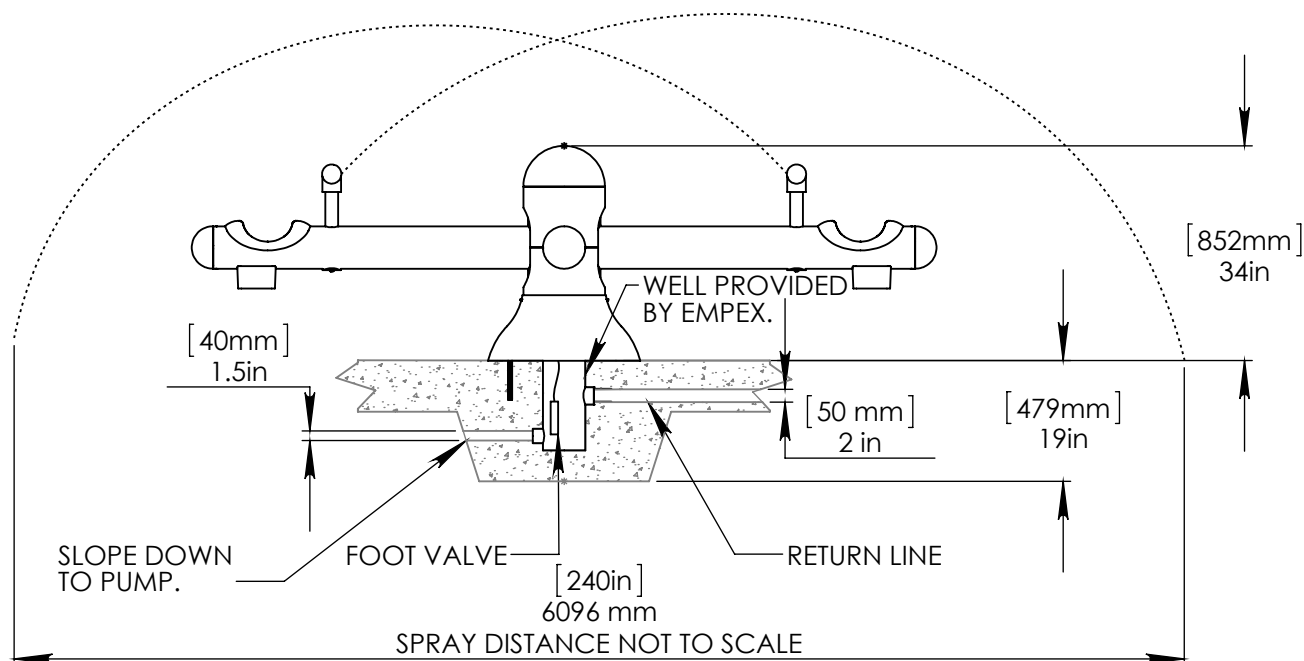
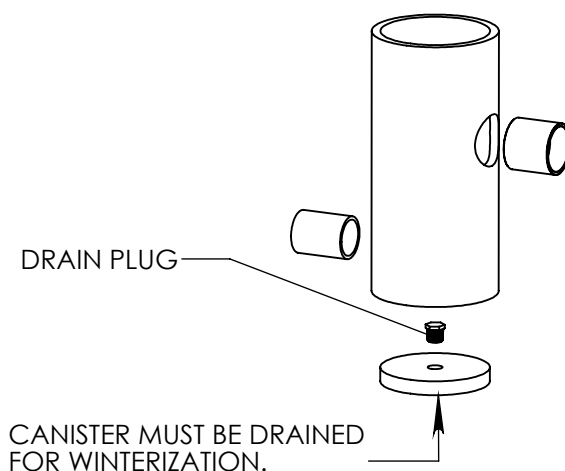
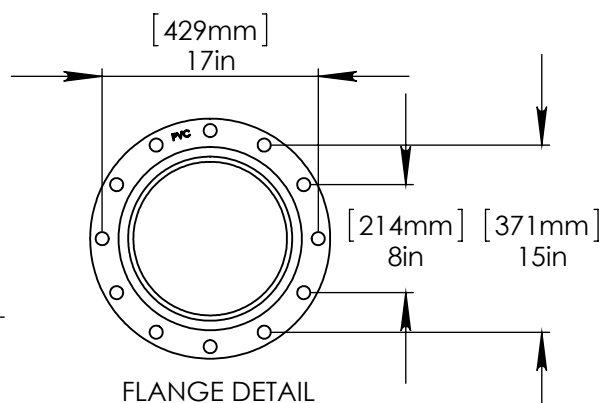
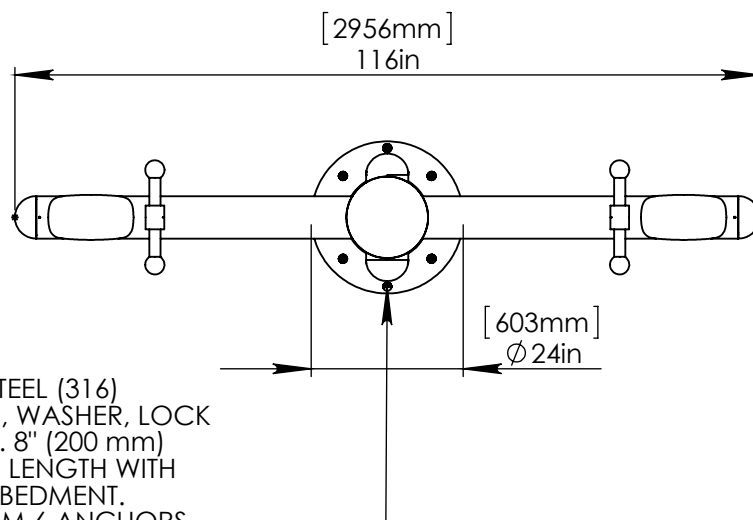
(1) PURGE ALL WATER SUPPLY LINES TO REMOVE SOLIDS PRIOR TO TOY INSTALLATION.

(2) PROVIDE ELECTRICAL BOND WITH POOL REBAR.

(3) INSTALL ALL WATER TOYS PLUMB AND LEVEL.

(4) PROVIDE STRAINER UPSTREAM OF TOY WITH MAX $1\frac{1}{32}$ " (0.8mm) PERFORATIONS.

5/8" STAINLESS STEEL (316) THREADED ROD, WASHER, LOCK WASHER, & NUT. 8" (200 mm) THREADED ROD LENGTH WITH 6" (150 mm) EMBEDMENT. INSTALL MINIMUM 6 ANCHORS.



Notes: Overall dimensions of toys are approximate.

© EMPEX WATERTOYS

WATER SUPPLY

10 gpm @ 25 psi
0.6 L/S @ 17.5m

WATERTOTTER - P

T311-P

4/10/2015

SCALE:
1:30

Sheet
1 of 1

1

2

3

4