

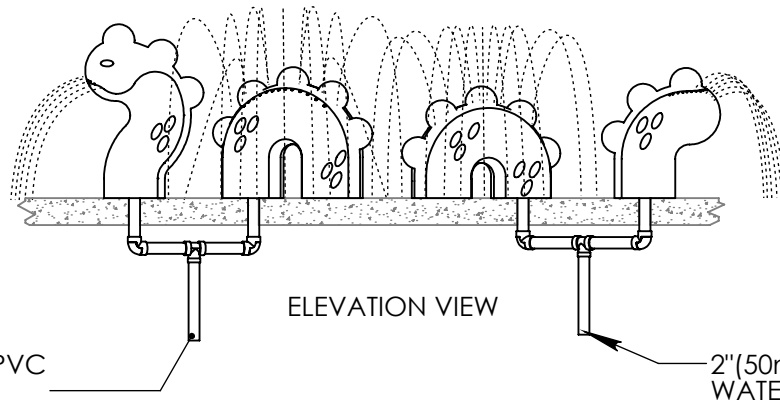
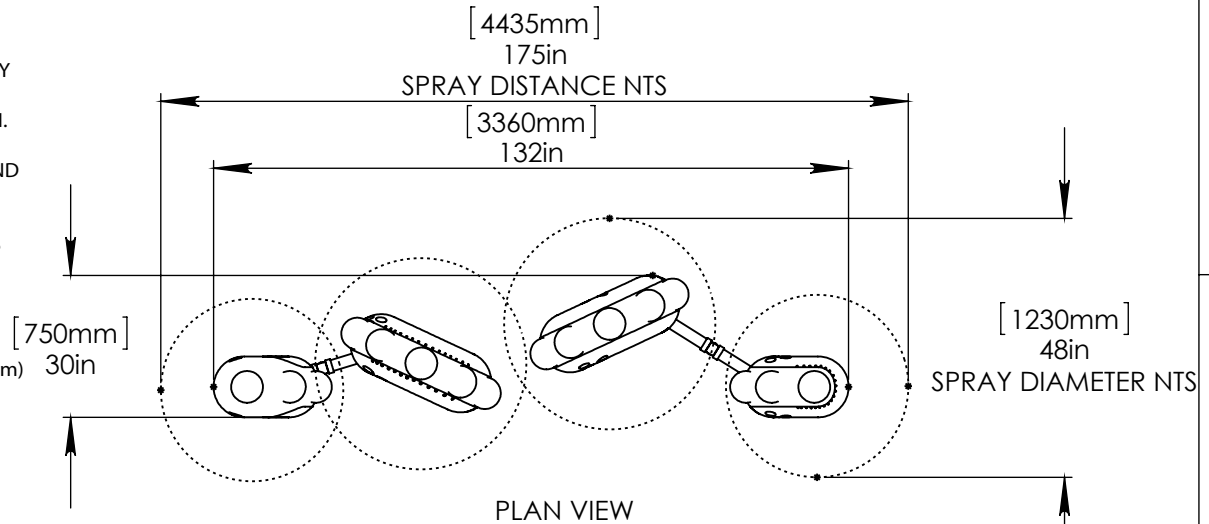
**NOTES:**

(1) PURGE ALL WATER SUPPLY LINES TO REMOVE SOLIDS PRIOR TO TOY INSTALLATION.

(2) PROVIDE ELECTRICAL BOND WITH POOL REBAR.

(3) INSTALL ALL WATER TOYS PLUMB AND LEVEL.

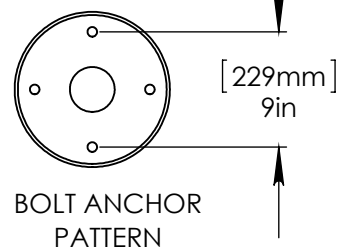
(4) PROVIDE STRAINER UPSTREAM OF TOY WITH MAX 1#32" (0.8mm) PERFORATIONS.



1" (25mm) HOSE PROVIDED BY EMPEX.

2" (50mm) TO 1" (25mm) ADAPTER TO BE SUPPLIED BY CONTRACTOR.

STAINLESS STEEL (316) 1/2" (13mm) THREADED ROD, WASHER, LOCK WASHER, & NUT. 5" LONG THREADED ROD WITH 4" (100mm) EMBEDMENT.



2" (50mm) SCH 40 PVC WATERFEED TO BE EXTENDED 8" (200mm) ABOVE POOL SLAB.

[203mm]  
8in



Notes: Overall dimensions of toys are approximate.

© EMPEX WATERTOYS

**WATER SUPPLY**

120 gpm @ 25 psi  
13.9L/S @ 17.5m  
(60 gpm (7 L/S) EACH WATER FEED)

**AQUAZILLA**

**M322**

8/25/2015

SCALE:  
1:40

Sheet  
1 of 1