

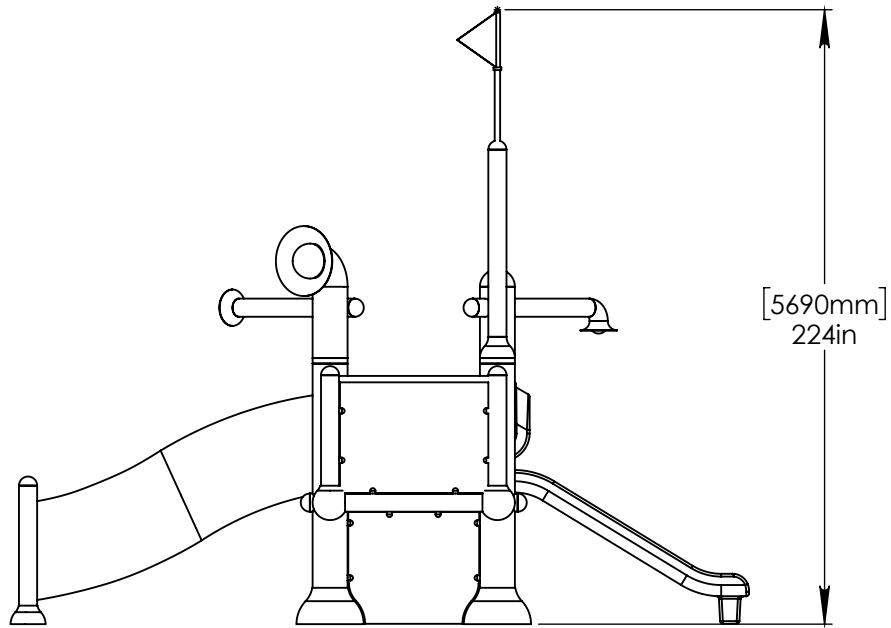
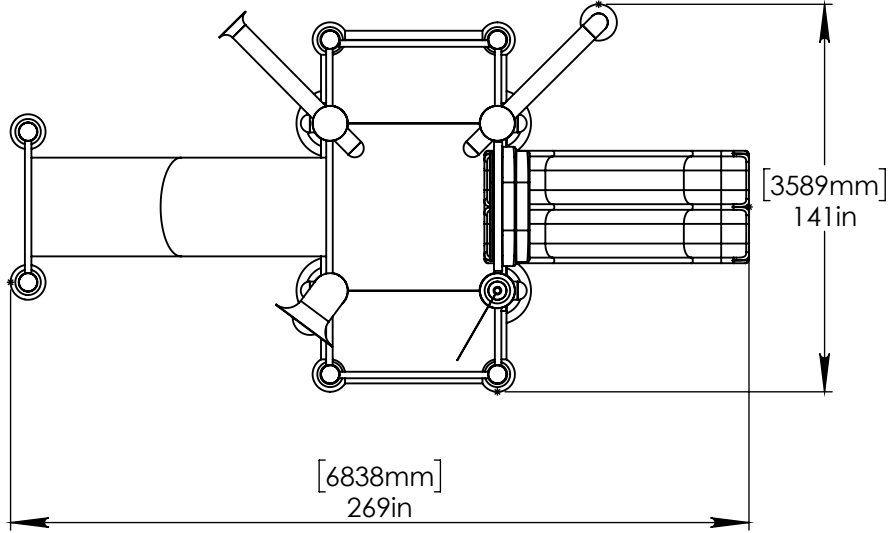
NOTES:

(1) PURGE ALL WATER SUPPLY LINES TO REMOVE SOLIDS PRIOR TO TOY INSTALLATION.

(2) PROVIDE ELECTRICAL BOND WITH POOL REBAR.

(3) INSTALL ALL WATER TOYS PLUMB AND LEVEL.

(4) PROVIDE STRAINER UPSTREAM OF TOY WITH MAX 1/32" (0.8mm) PERFORATIONS.



Notes: Overall dimensions of toys are approximate.

© EMPEX WATERTOYS

WATER SUPPLY
 340 gpm @ 25 psi
 21.4 L/S @ 17.5m

AQUADEK

T410-1

7/22/2016

SCALE:
1:70

Sheet
1 of 2

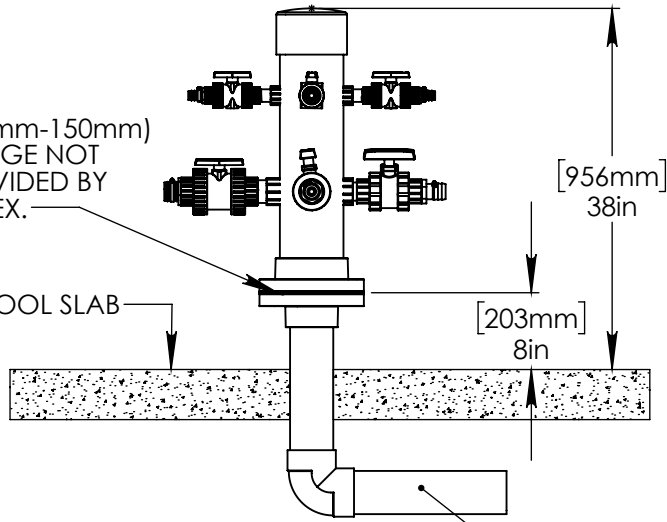
A

HEADER PROVIDED BY EMPEX

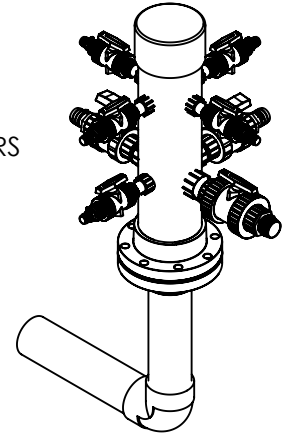
- (1) 2" (50mm) VALVES: AQUAFALL
- (2) 1" (38mm) VALVES: AQUAFLAG AQUAFAN
- (5) 1" (25mm) VALVE: AQUASHOWER
- (4) FINGER SHOOTERS

4"-6" (100mm-150mm) FLANGE NOT PROVIDED BY EMPEX.

POOL SLAB



4" (100mm) PVC SCH 40 WATERFEED.



B

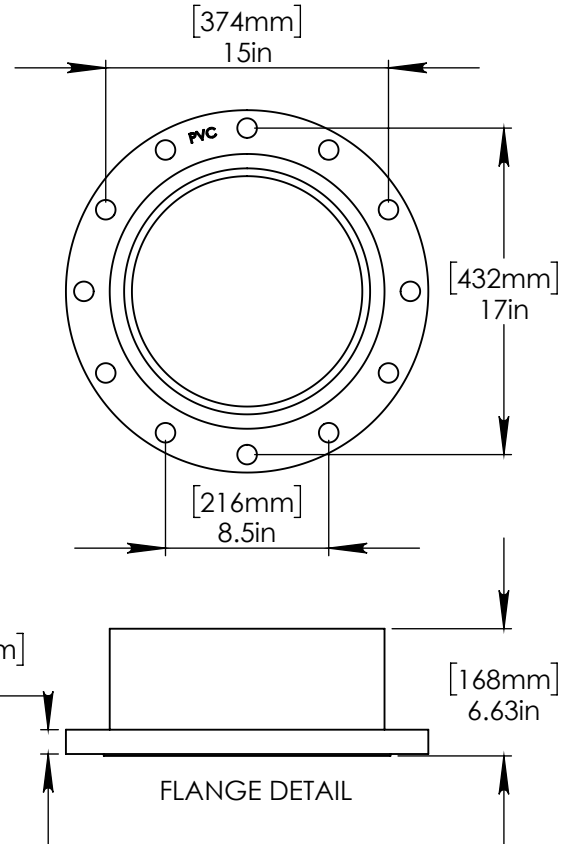
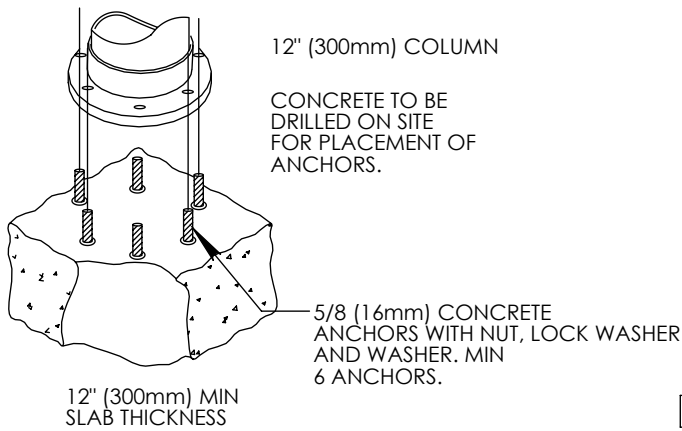
B

C

C

D

D



E

E

F

F



Notes: Overall dimensions of toys are approximate.

© EMPEX WATERTOYS

WATER SUPPLY

340 gpm @ 25 psi
21.4 L/S @ 17.5m

AQUADEK

T410-1

7/22/2016

SCALE:
1:10

Sheet
2 of 2