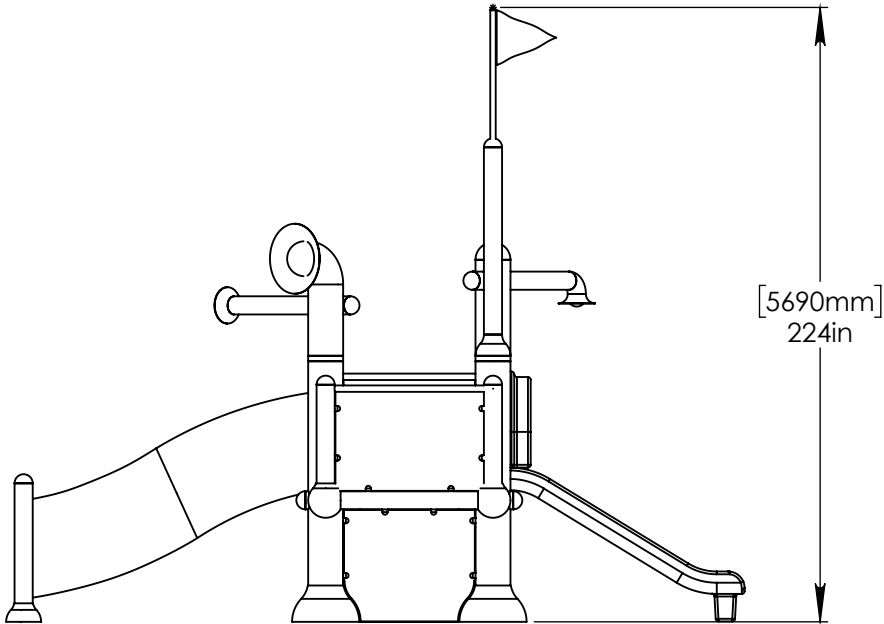
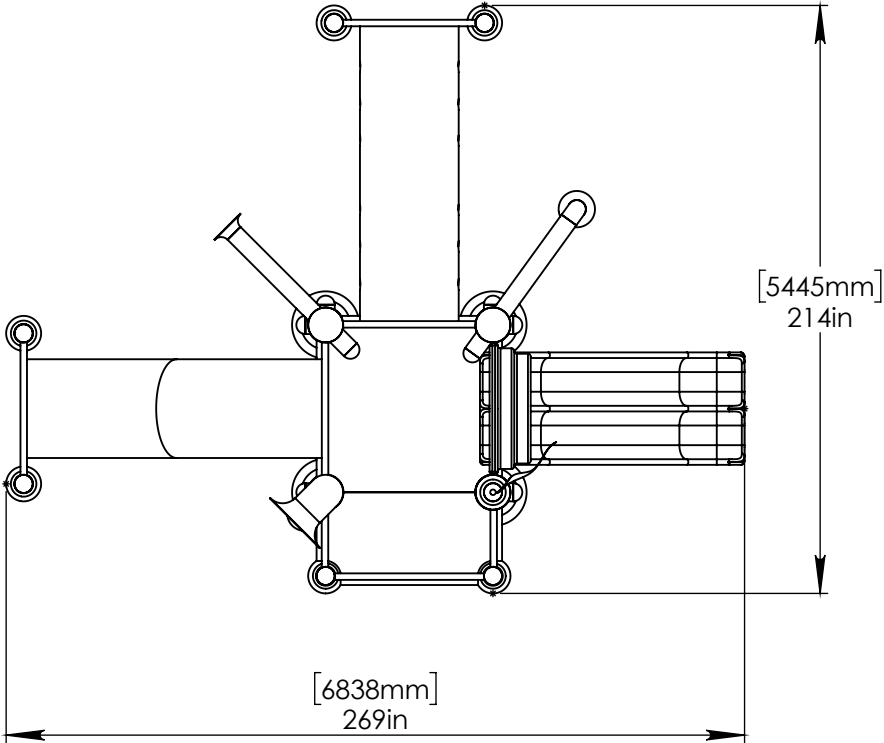


NOTES:

- (1) PURGE ALL WATER SUPPLY LINES TO REMOVE SOLIDS PRIOR TO TOY INSTALLATION.
- (2) PROVIDE ELECTRICAL BOND WITH POOL REBAR.
- (3) INSTALL ALL WATER TOYS PLUMB AND LEVEL.
- (4) PROVIDE STRAINER UPSTREAM OF TOY WITH MAX 1#32" (0.8mm) PERFORATIONS.



Notes: Overall dimensions of toys are approximate.

© EMPEX WATERTOYS

WATER SUPPLY
280 gpm @ 25 psi
17.6 L/S @17.5m

AQUADEK

T410-1A

7/22/2016

SCALE:
1:70

Sheet
1 of 2

HEADER PROVIDED
BY EMPEX

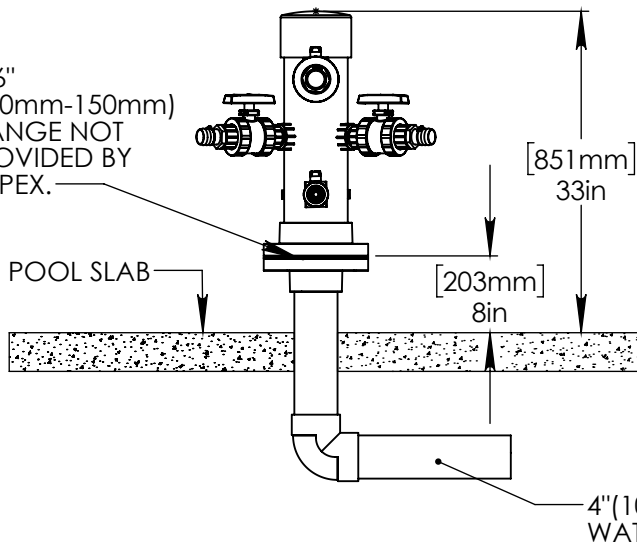
(1) 2" (50mm) VALVES:
AQUAFALL

(2) 1.5" (38mm) VALVES:
AQUAFAN
AQUAFLAG

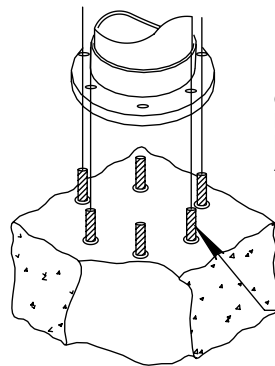
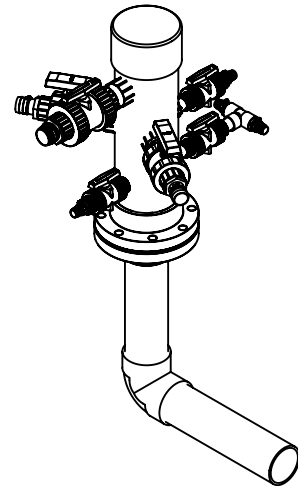
(3) 1" (25mm) VALVES:
AQUASHOWER
AQUACURTAIN
FINGERSHOOTERS

4"-6"
(100mm-150mm)
FLANGE NOT
PROVIDED BY
EMPEX.

POOL SLAB



4" (100mm) PVC SCH 40
WATERFEED.

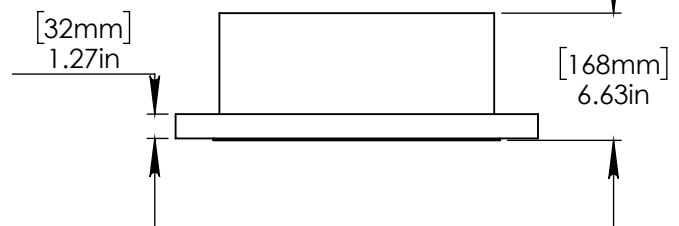
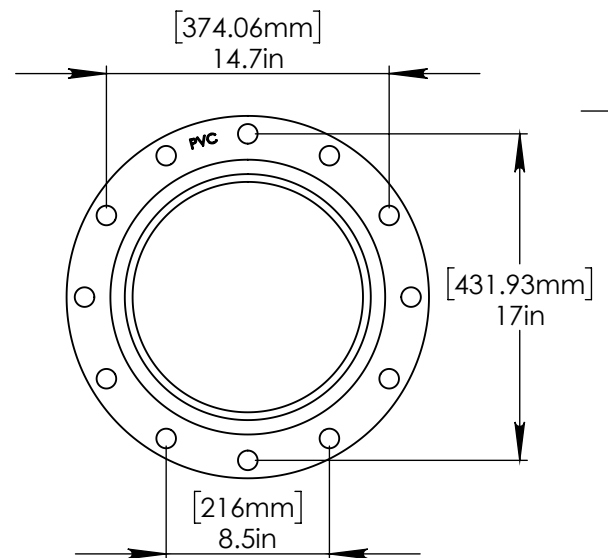


12" (300mm) COLUMN

CONCRETE TO BE
DRILLED ON SITE
FOR PLACEMENT OF
ANCHORS.

5/8 (16mm) CONCRETE
ANCHORS WITH NUT, LOCK WASHER
AND WASHER. MIN
6 ANCHORS.

12" (300mm) MIN
SLAB THICKNESS



Notes: Overall dimensions of toys are approximate.

© EMPEX WATERTOYS

WATER SUPPLY

280 gpm @ 25 psi
17.6 L/S @ 17.5m

AQUADEK

T410-1A

7/22/2016

SCALE:
1:10

Sheet
2 of 2