

NOTES:

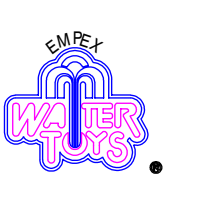
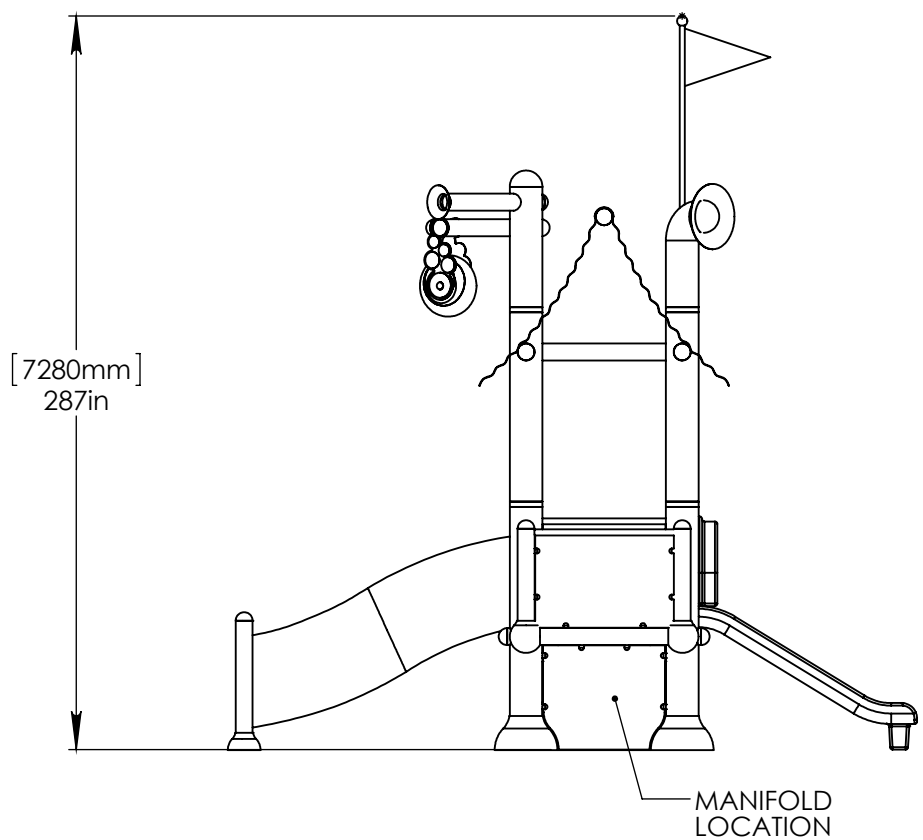
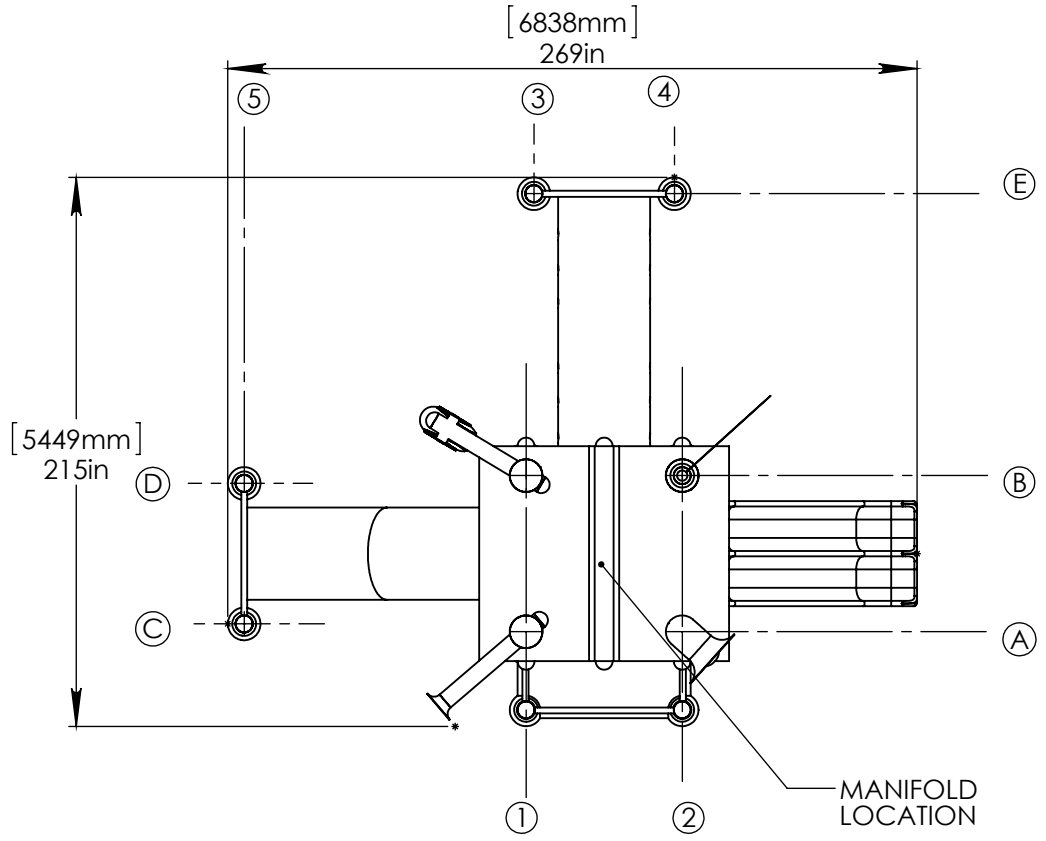
(1) PROVIDE ELECTRICAL BOND WITH POOL REBAR.

(2) 2 PART EPOXY MAY BE USED IN LIEU OF INSERT ANCHOR.

(3) PURGE ALL WATER SUPPLY LINES TO REMOVE SOLIDS PRIOR TO TOY INSTALLATION.

(4) INSTALL ALL WATER TOYS PLUMB AND LEVEL.

(5) PROVIDE STRAINER UPSTREAM OF TOY WITH MAX 1#32" (0.8mm) PERFORATIONS.



Notes : (1) Dual Dimensions
 (2) Outer dimensions of toys are approximate.

© EMPEX WATER TOYS
 NOV 08, 2013

Scale
 N.T.S.

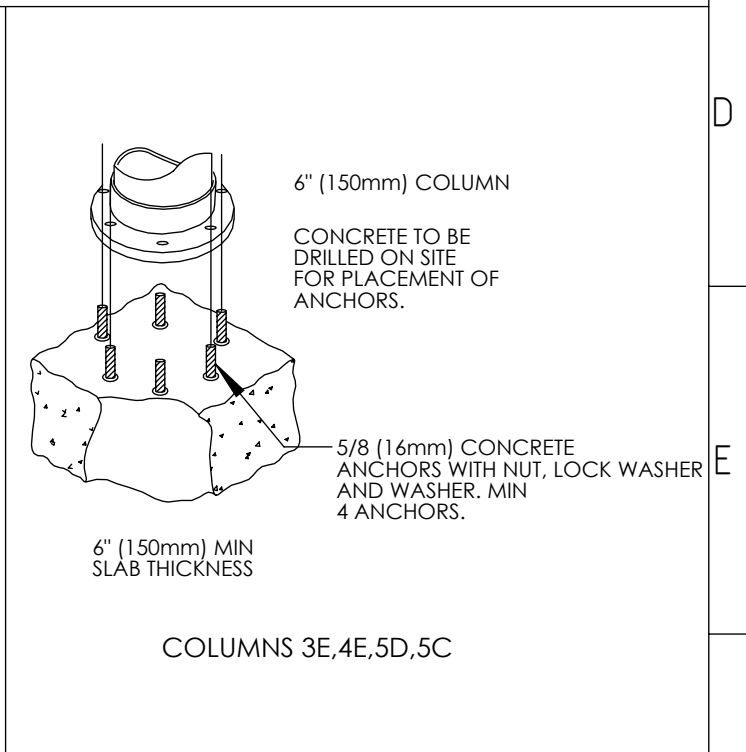
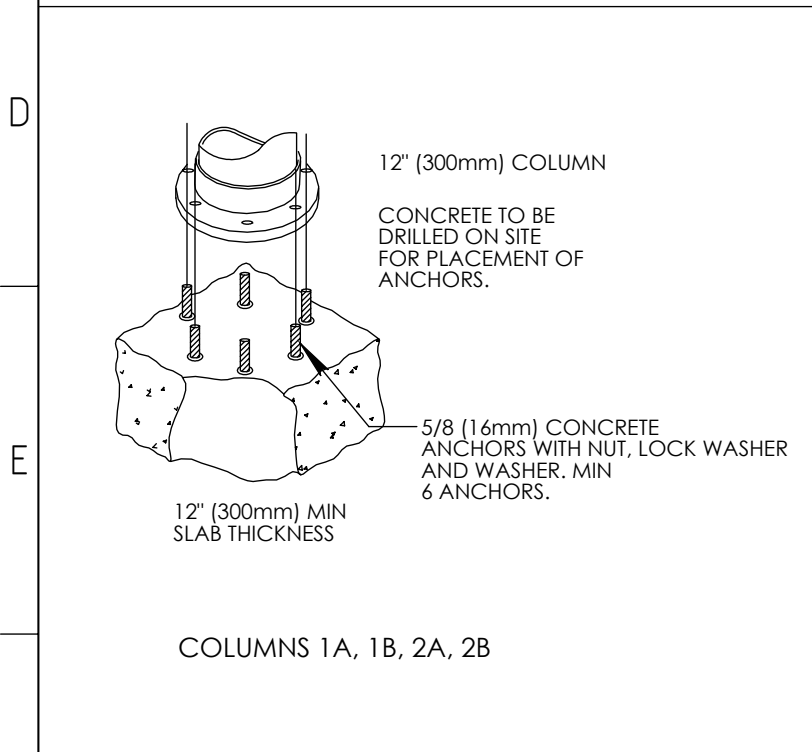
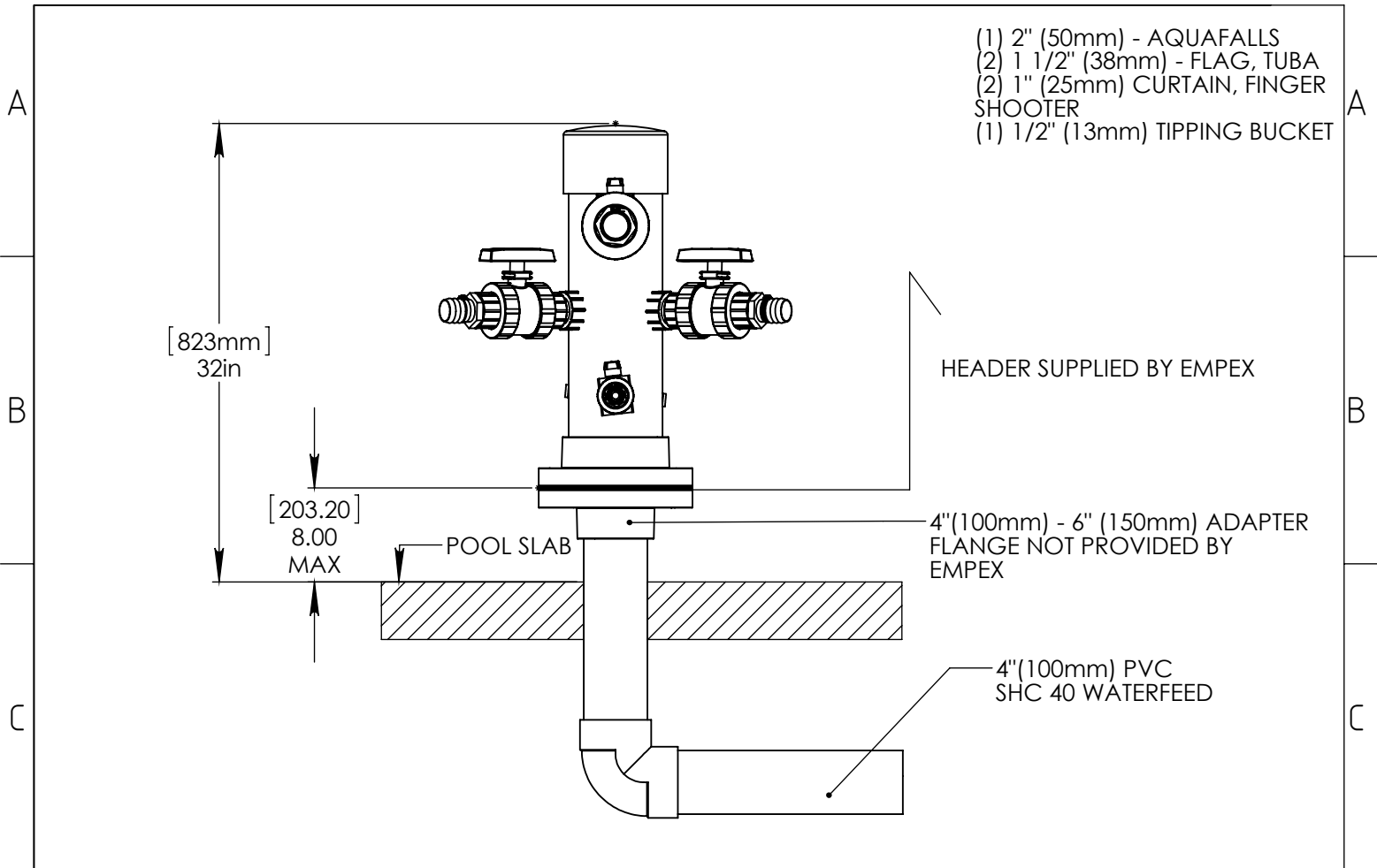
WATER SUPPLY
 220 gpm @ 25 psi
 14L/S @17.5m

AQUADEK T410-1AR

T410-1AR

Edition

Sheet
 1/1



	Notes : (1) Dual Dimensions (2) Outer dimensions of toys are approximate.	© EMPEX WATER TOYS NOV 08, 2013	Scale N.T.S.
	WATER SUPPLY 220 gpm @ 25 psi 14L/S @ 17.5m	<h1>AQUADEK T410-1AR</h1>	
	T410-1AR	Edition	Sheet 1/1