

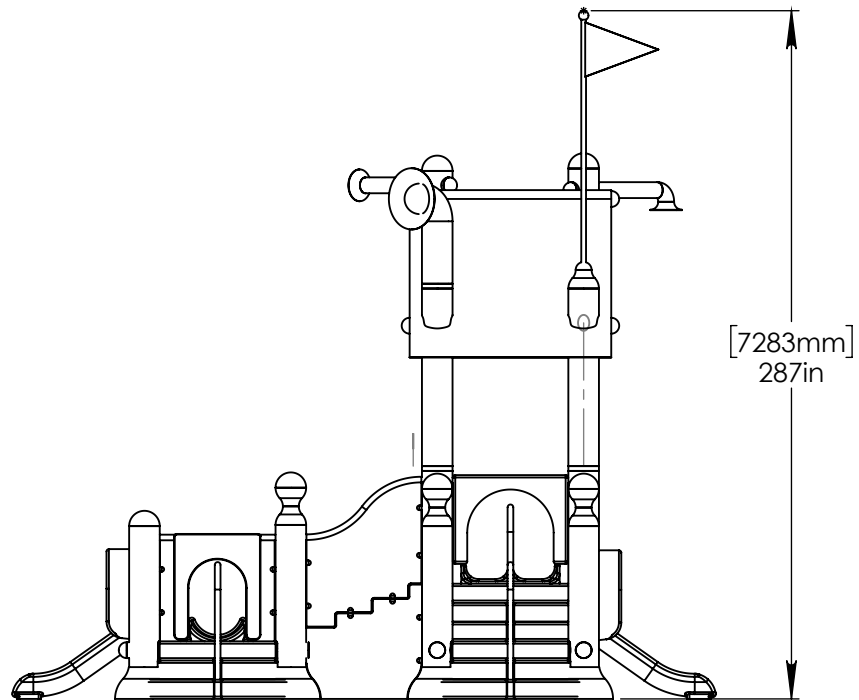
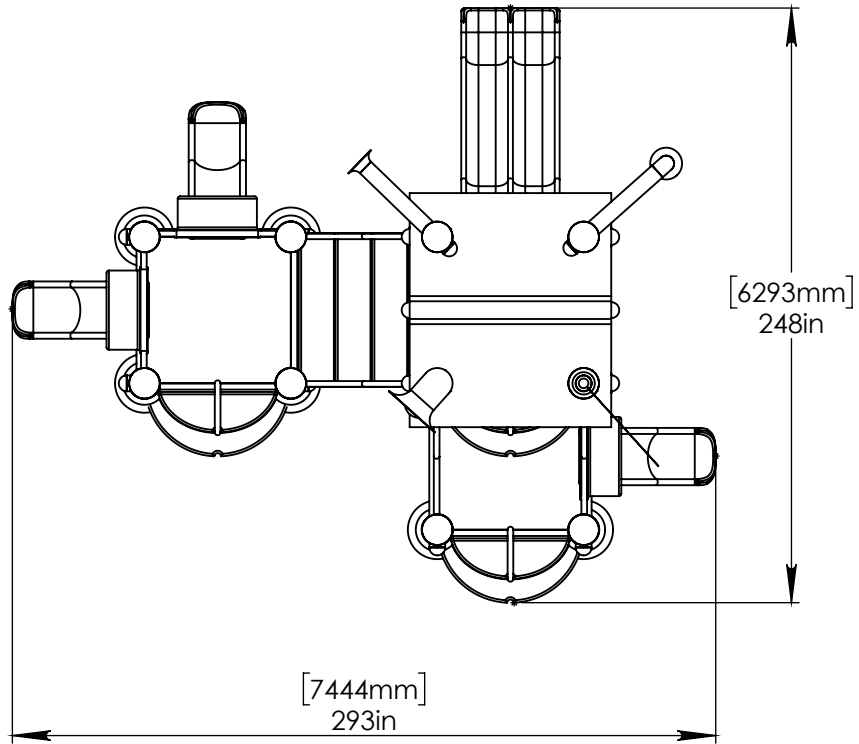
NOTES:

(1) PURGE ALL WATER SUPPLY LINES TO REMOVE SOLIDS PRIOR TO TOY INSTALLATION.

(2) PROVIDE ELECTRICAL BOND WITH POOL REBAR.

(3) INSTALL ALL WATER TOYS PLUMB AND LEVEL.

(4) PROVIDE STRAINER UPSTREAM OF TOY WITH MAX 1/32" (0.8mm) PERFORATIONS.



Notes: Overall dimensions of toys are approximate.

© EMPEX WATERTOYS

WATER SUPPLY
 530 gpm @ 25 psi
 33.4 L/S @ 17.5m

AQUADEK

T410-242R

8/5/2016

SCALE:
1:80

Sheet
1 of 2

HEADER TO BE SUPPLIED BY EMPEX

- (1) 2" (50mm) VALVES: AQUAFALL
- (2) 1.5" (38mm) VALVES: AQUAFAN AQUAFLAG
- (5) 1/2" (13mm) VALVE: AQUASHOWER AQUAFINIAL(2) FINGERSHOOTERS(2)

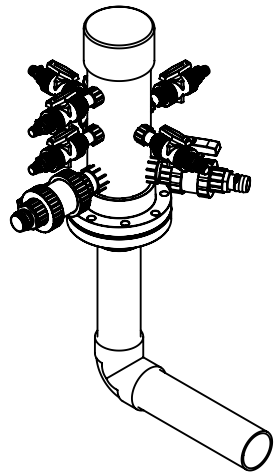
6" (150mm) FLANGE NOT PROVIDED BY EMPEX.

POOL SLAB

[807mm] 32in

[203mm] 8in

6" (150mm) PVC SCH 40 WATERFEED.



A

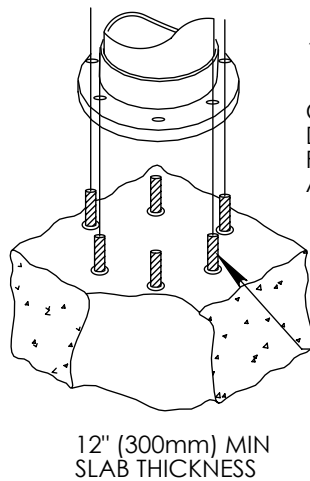
A

B

B

C

C

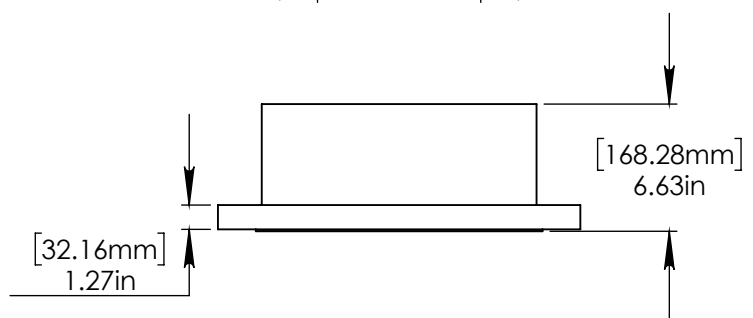
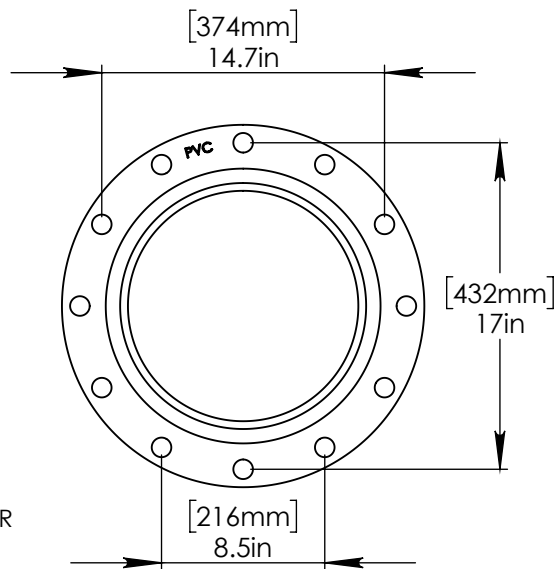


12" (300mm) COLUMN

CONCRETE TO BE DRILLED ON SITE FOR PLACEMENT OF ANCHORS.

5/8 (16mm) CONCRETE ANCHORS WITH NUT, LOCK WASHER AND WASHER. MIN 6 ANCHORS.

12" (300mm) MIN SLAB THICKNESS



D

D

E

E



Notes: Overall dimensions of toys are approximate.

© EMPEX WATERTOYS

WATER SUPPLY
 530 gpm @ 25 psi
 33.4 L/S @ 17.5m

AQUADEK

T410-242R

8/5/2016

SCALE: 1:20

Sheet 2 of 2

F

F