

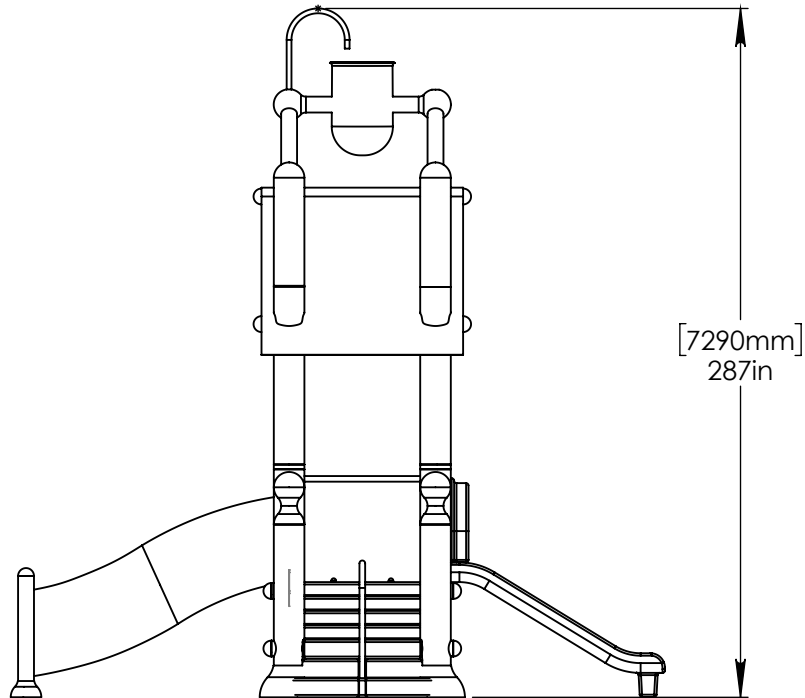
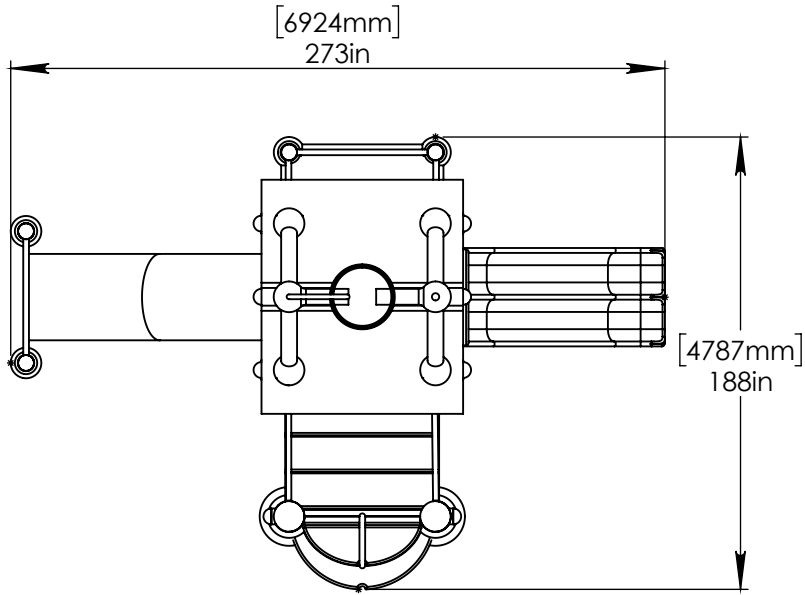
NOTES:

(1) PURGE ALL WATER SUPPLY LINES TO REMOVE SOLIDS PRIOR TO TOY INSTALLATION.

(2) PROVIDE ELECTRICAL BOND WITH POOL REBAR.

(3) INSTALL ALL WATER TOYS PLUMB AND LEVEL.

(4) PROVIDE STRAINER UPSTREAM OF TOY WITH MAX 1/32" (0.8mm) PERFORATIONS.



Notes: Overall dimensions of toys are approximate.

© EMPEX WATERTOYS

WATER SUPPLY
 160 gpm @ 25 psi
 10 L/S @ 17.5m

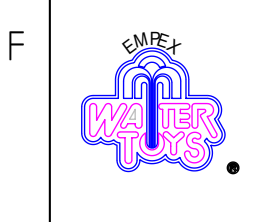
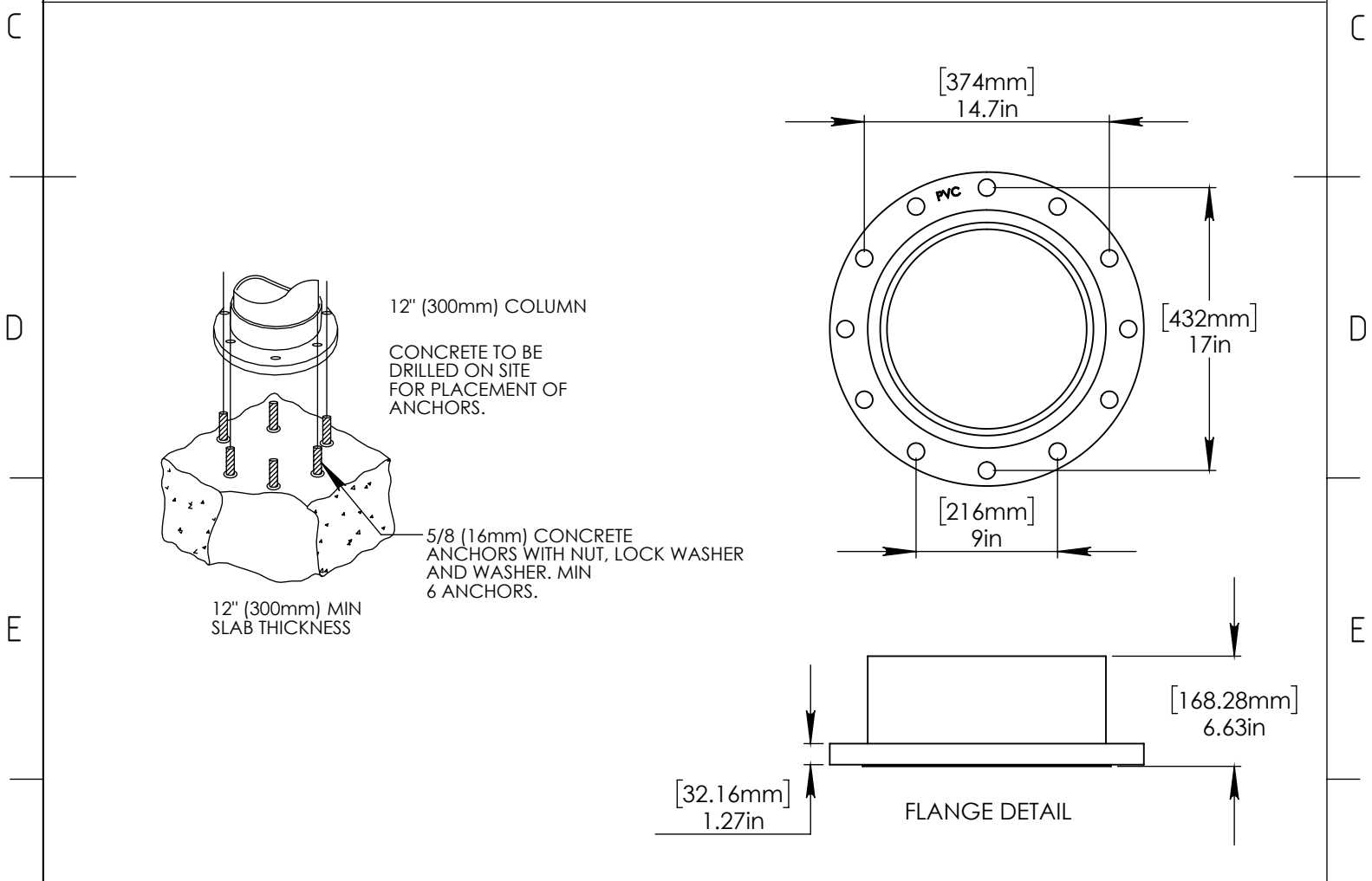
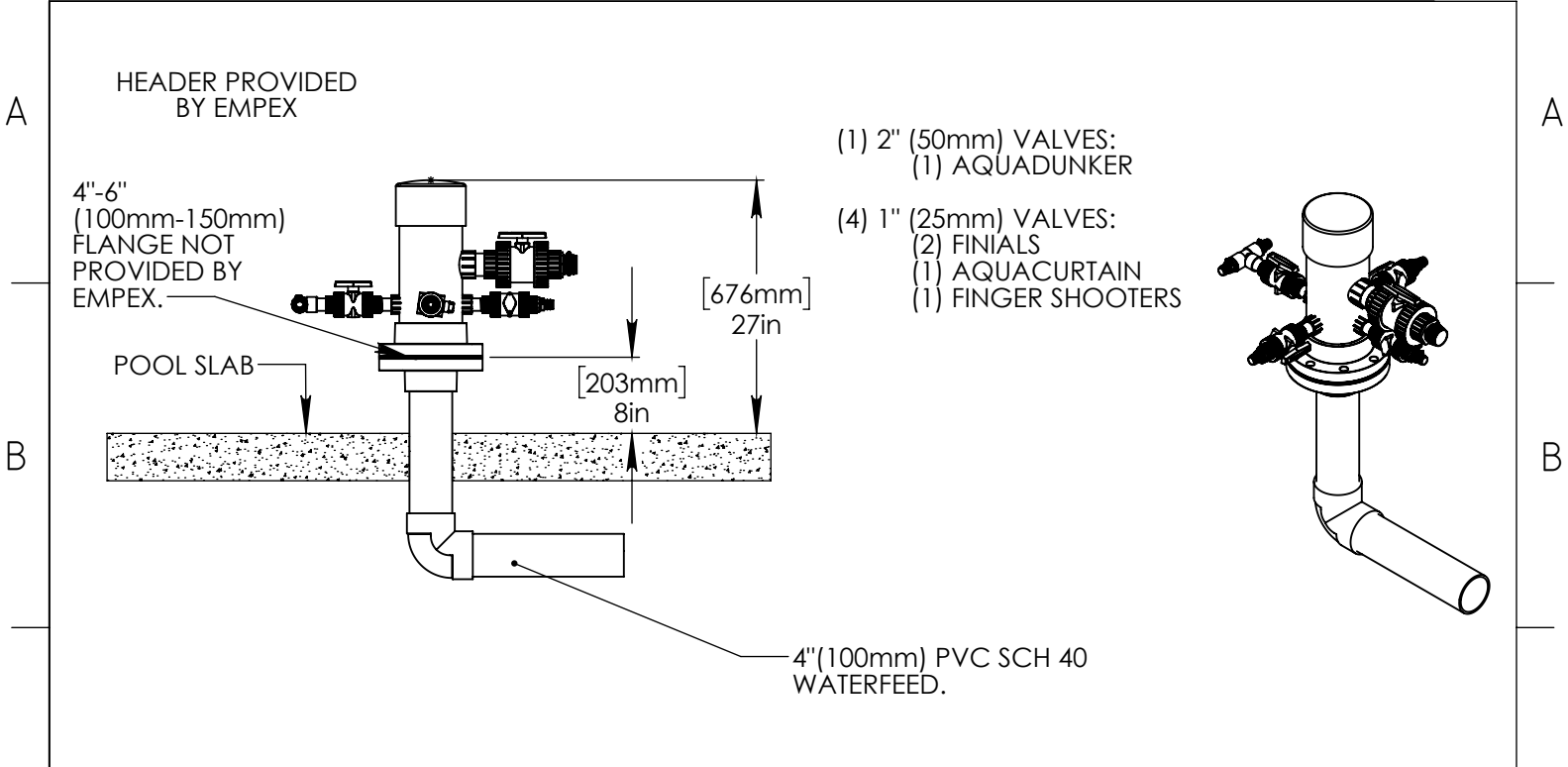
AQUADEK

T410-4D

7/28/2016

SCALE:
1:80

Sheet
1 of 2



Notes: Overall dimensions of toys are approximate.

© EMPEX WATERTOYS

WATER SUPPLY
160 gpm @ 25 psi
10 L/S @ 17.5m

AQUADEK

T410-4D 7/28/2016 SCALE: 1:10 Sheet 2 of 2