

1

2

3

4

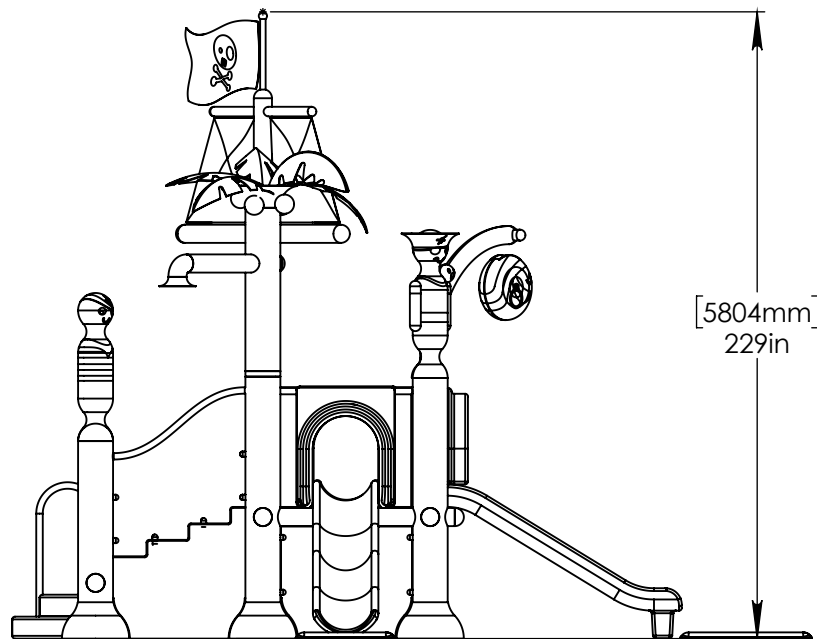
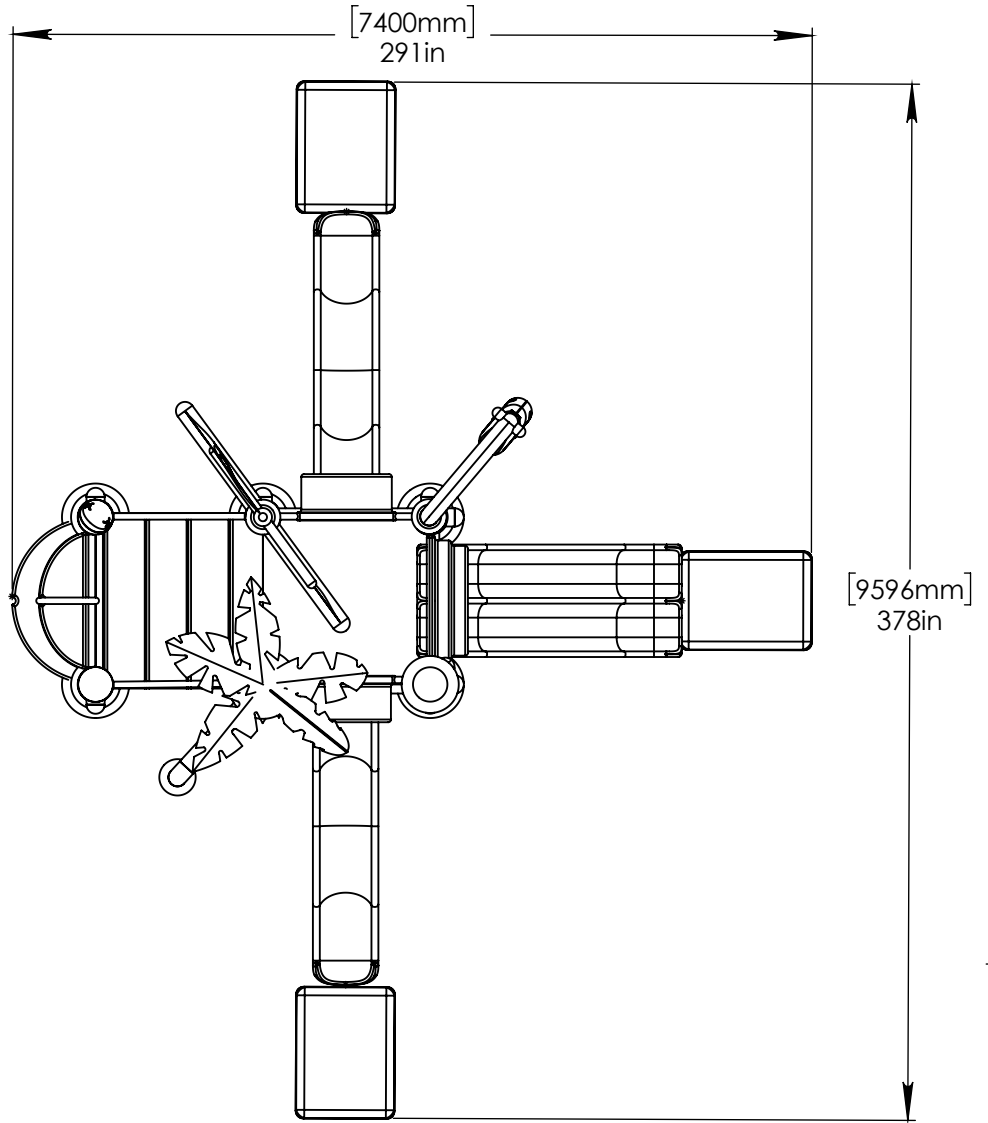
NOTES:

(1) PURGE ALL WATER SUPPLY LINES TO REMOVE SOLIDS PRIOR TO TOY INSTALLATION.

(2) PROVIDE ELECTRICAL BOND WITH POOL REBAR.

(3) INSTALL ALL WATER TOYS PLUMB AND LEVEL.

(4) PROVIDE STRAINER UPSTREAM OF TOY WITH MAX 1/32" (0.8mm) PERFORATIONS.



Notes: Overall dimensions of toys are approximate.

© EMPEX WATERTOYS



WATER SUPPLY
 130 gpm @ 25 psi
 8.2 L/S @17.5m

AQUADEK

T410-P-3S

1/30/2017

SCALE:
1:70

Sheet
1 of 2

1

2

3

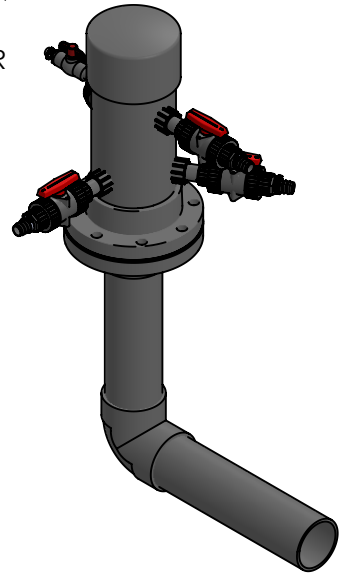
4

A

HEADER PROVIDED BY EMPEX

- (4) 1" (100mm) VALVE:
- (1) AQUACURTAIN
- (2) AQUATOT
- (1) AQUASHOWER

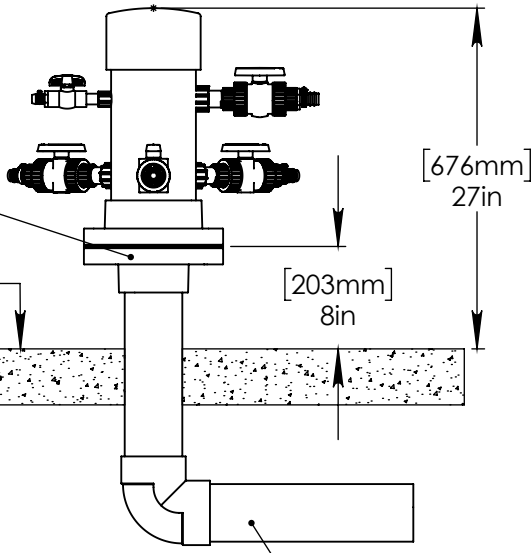
- (1) 0.5(50mm) VALVE:
- (1) AQUADUNK



A

B

4"-6"
(100-150mm)
FLANGE NOT
PROVIDED BY
EMPEX



[676mm]
27in

[203mm]
8in

POOL SLAB

B

C

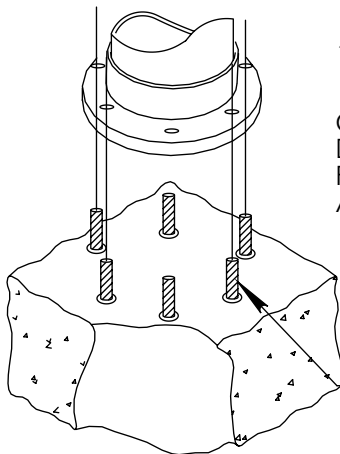
4" (100mm) PVC SCH 40
WATERFEED

C

D

12" (300mm) COLUMN

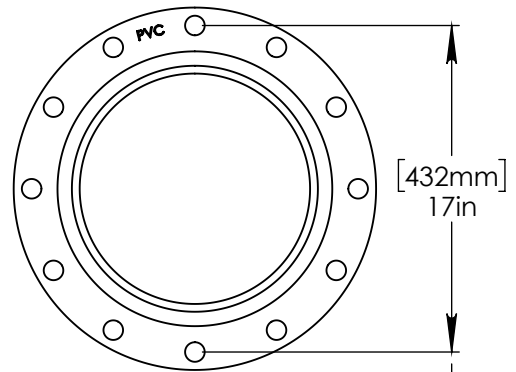
CONCRETE TO BE
DRILLED ON SITE
FOR PLACEMENT OF
ANCHORS.



5/8 (16mm) CONCRETE
ANCHORS WITH NUT, LOCK WASHER
AND WASHER. MIN
6 ANCHORS.

12" (300mm) MIN
SLAB THICKNESS

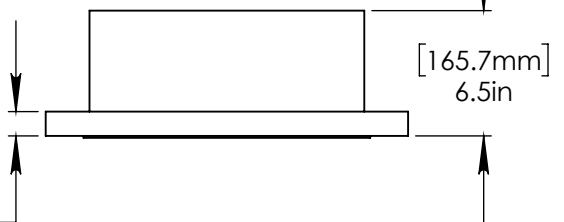
D



[432mm]
17in

E

E



[165.7mm]
6.5in

[32.2mm]
1.27in

F

F



Notes: Overall dimensions of toys are approximate.

© EMPEX WATERTOYS

WATER SUPPLY

130 gpm @ 25 psi
8.2 L/S @17.5m

AQUADEK

T410-P-3S

1/30/2017

SCALE:
1:10

Sheet
2 of 2