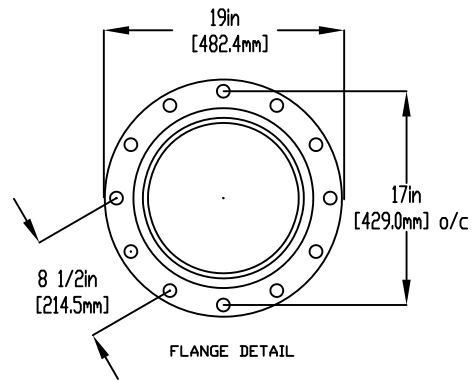


ELEVATION VIEW



FLANGE DETAIL

NOTES:

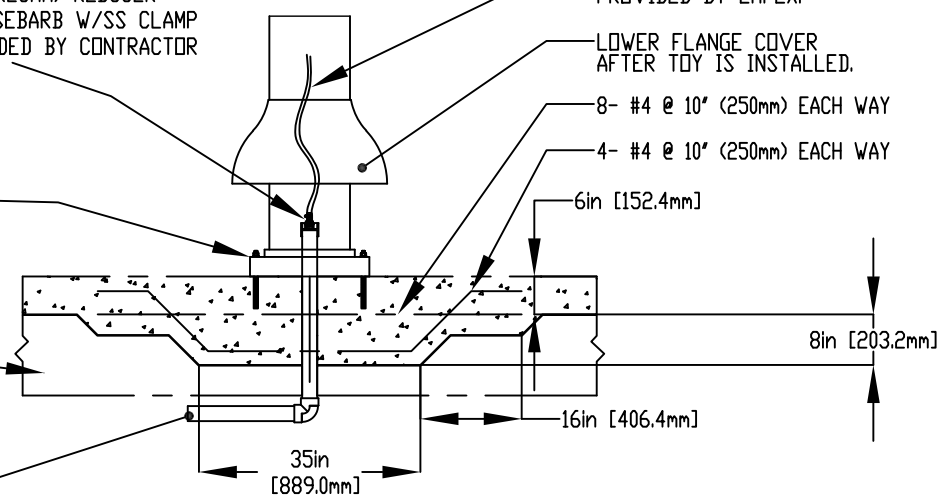
- (1) PURGE ALL WATER SUPPLY LINES TO REMOVE SOLIDS PRIOR TO TOY INSTALLATION.
- (2) PROVIDE ELECTRICAL BOND WITH POOL REBAR.
- (3) INSTALL ALL WATER TOYS PLUMB AND LEVEL.
- (4) PROVIDE STRAINER UPSTREAM OF TOY WITH MAX 1/32" (0.8mm) PERFORATIONS.

- 2" (50mm) COUPLING
- 2" (50mm)-1" (25mm) REDUCER
- 1" (25mm) HOSEBARB W/SS CLAMP TO BE PROVIDED BY CONTRACTOR

5/8" (16mm) X 11" (280mm) 316SS THREADED ROD W/ FENDERWASHER, LOCKWASER & NUT, MIN (X8) WITH 6" (150mm) EMBEDMENT. EPOXY SET ANCHOR ADHESIVE TO BE PROVIDED BY CONTRACTOR

GRANULAR BASE

WATERFEED  
2" (50mm) PVC SCH 4 PIPE EXTENDED 8" (200mm) ABOVE SLAB.



Notes: Overall dimensions of toys are approximate.

© EMPEX WATERTOYS

WATER SUPPLY  
50 gpm @ 25 psi  
3.15L/S @17.5m

TIPPIN' PARROTS

T437

114/10/2021

SCALE:

Sheet 1 of 1