

1

2

3

4

A

B

C

D

E

F

A

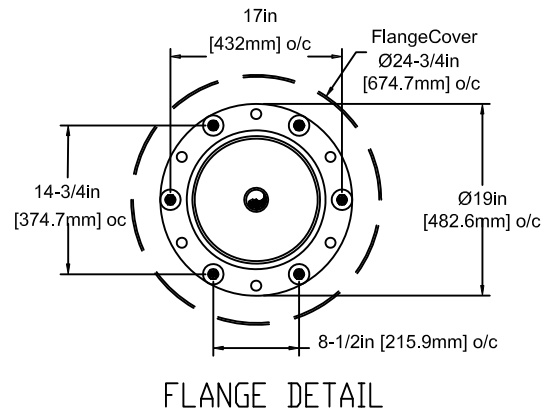
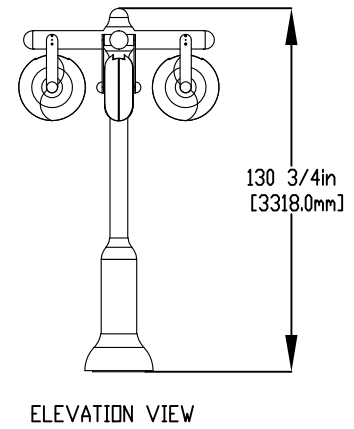
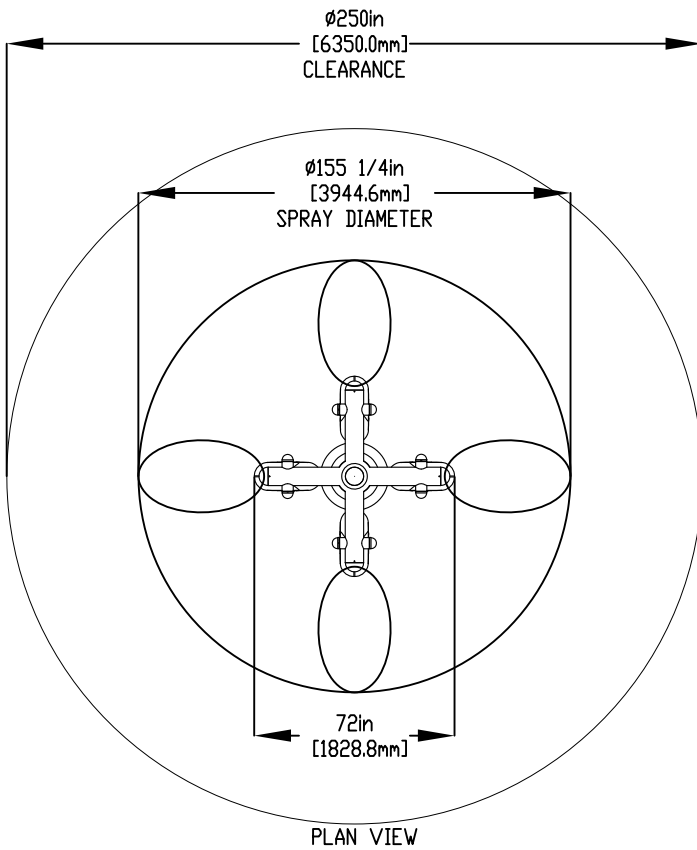
B

C

D

E

F

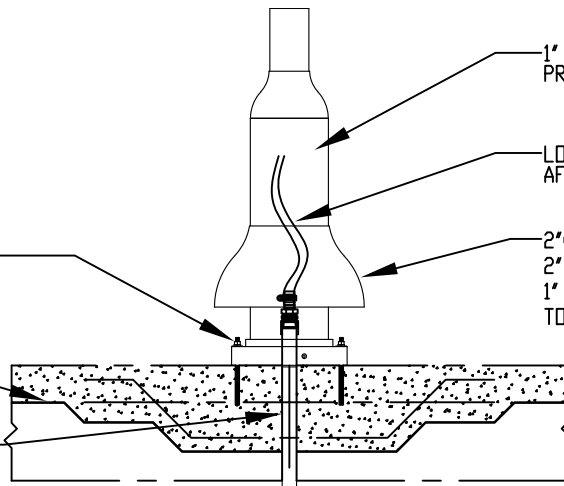


NOTES:

- (1) PURGE ALL WATER SUPPLY LINES TO REMOVE SOLIDS PRIOR TO TOY INSTALLATION.
- (2) PROVIDE ELECTRICAL BOND WITH POOL REBAR.
- (3) INSTALL ALL WATER TOYS PLUMB AND LEVEL.
- (4) PROVIDE STRAINER UPSTREAM OF TOY WITH MAX PERFORATIONS.

STAINLESS STEEL (316)
 5/8" (16mm) THREADED ROD,
 WASHER, LOCK WASHER, & NUT,
 THREADED ROD LENGTH 11' (280mm)
 WITH 6' (150mm) EMBEDMENT. USE MIN.
 8 ANCHORS.
 TO BE PROVIDED BY CONTRACTOR

GRANULAR BASE
 2" (50mm) PVC SCH 40
 WATERFEED TO BE
 EXTENDED 8' (200mm)
 ABOVE SLAB.



1" (25mm) FLEX HOSE PROVIDED BY EMPEX.

LOWER FLANGE COVER AFTER TOY IS INSTALLED.

2" (50mm) COUPLING
 2" (50mm)-1" (25mm) REDUCER
 1" (25mm) HOSEBARB W/ SS CLAMP
 TO BE PROVIDED BY CONTRACTOR

Notes: Overall dimensions of toys are approximate.
 Approximate Weight: 230lbs / 104.5kgs

© EMPEX WATERTOYS



WATER SUPPLY

40 gpm @ 25 psi
 2.52 L/S @17.5m

AQUATIPS QUATTRO

T439

24/09/2020

SCALE:

Sheet 1 of 1

1

2

3

4