

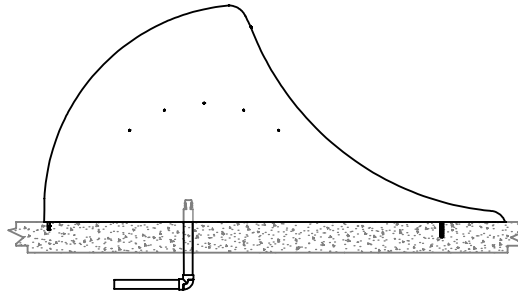
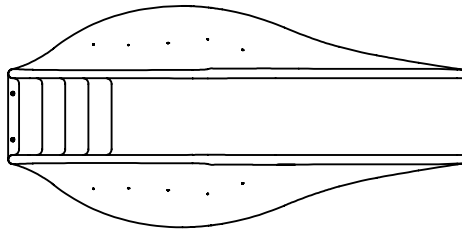
NOTES:

(1) PURGE ALL WATER SUPPLY LINES TO REMOVE SOLIDS PRIOR TO TOY INSTALLATION.

(2) PROVIDE ELECTRICAL BOND WITH POOL REBAR.

(3) INSTALL ALL WATER TOYS PLUMB AND LEVEL.

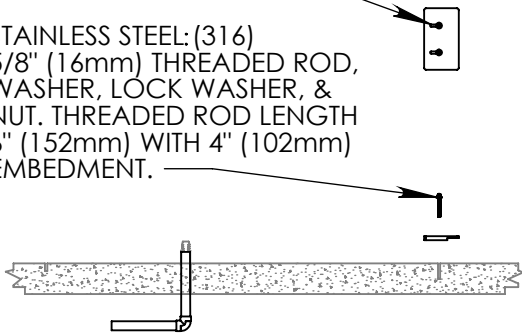
(4) PROVIDE STRAINER UPSTREAM OF TOY WITH MAX 1/32" (0.8mm) PERFORATIONS.



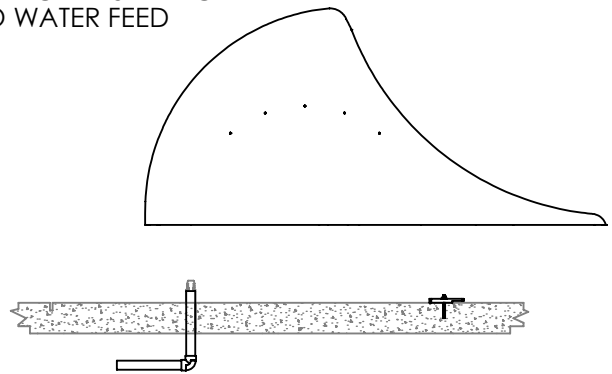
INSTALL ANCHOR PLATE

ANCHOR PLATE

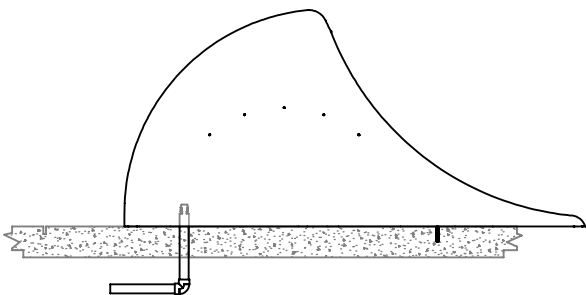
STAINLESS STEEL: (316)
5/8" (16mm) THREADED ROD,
WASHER, LOCK WASHER, &
NUT. THREADED ROD LENGTH
6" (152mm) WITH 4" (102mm)
EMBEDMENT.



ATTACH PLUMBING TO WATER FEED

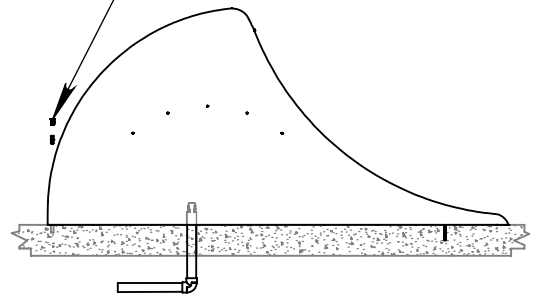


ENGAGE AQUAWAVE BY SLIDING FIBERGLASS UNDER ANCHORE PLATE.



ONCE ENGAGED, BOLT AQUAWAVE BY BOLTING BACK BOLTS TO CONCRETE SLAB.

STAINLESS STEEL FLATE HEAD
.5"x1.5" (13mm x 38mm),
2" (50mm) ANCHOR
WITH 2" (50mm) EMBEDMENT.



Notes: Overall dimensions of toys are approximate.

© EMPEX WATERTOYS

WATER SUPPLY
60 gpm @ 20 psi
3.79L/S @ 14.5m

AQUAWAVE INSTALLION DIAGRAM

T450

1/5/2015

SCALE:
1:50

Sheet
1 of 1