

1

2

3

4

A

A

NOTES:

(1) PURGE ALL WATER SUPPLY LINES TO REMOVE SOLIDS PRIOR TO TOY INSTALLATION.

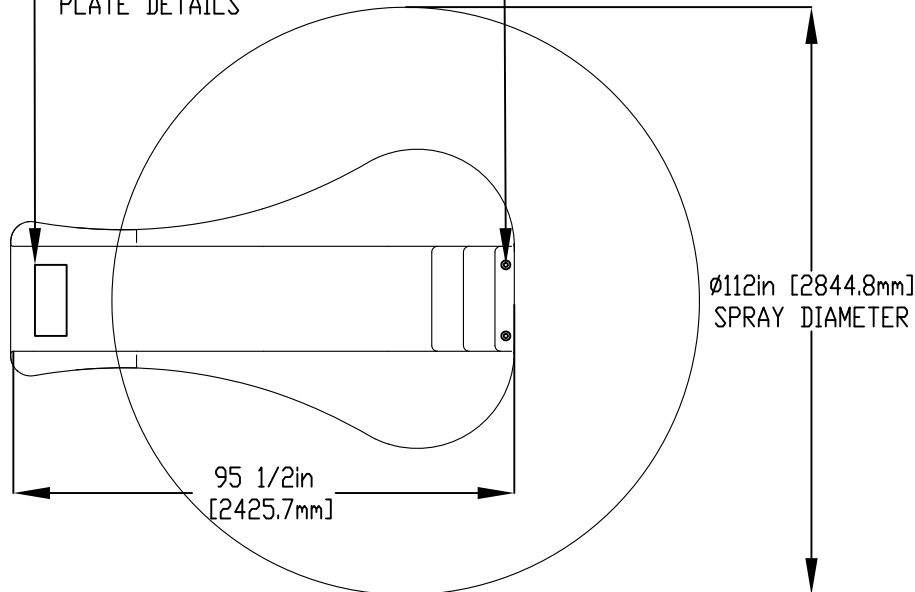
(2) PROVIDE ELECTRICAL BOND WITH POOL REBAR.

(3) INSTALL ALL WATER TOYS PLUMB AND LEVEL.

(4) PROVIDE STRAINER UPSTREAM OF TOY WITH MAX PERFORATIONS. 1#32" (0.8mm)

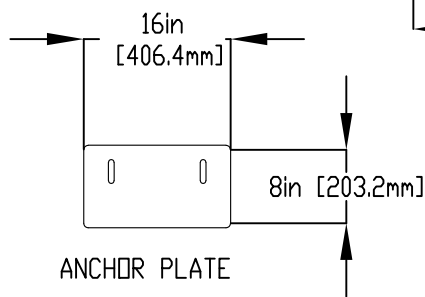
REFER TO INSTALL DIAGRAM FOR ANCHOR PLATE DETAILS

REFER TO INSTALL DIAGRAM FOR ANCHOR DETAILS



Ø112in [2844.8mm] SPRAY DIAMETER

95 1/2in [2425.7mm]



ANCHOR PLATE

B

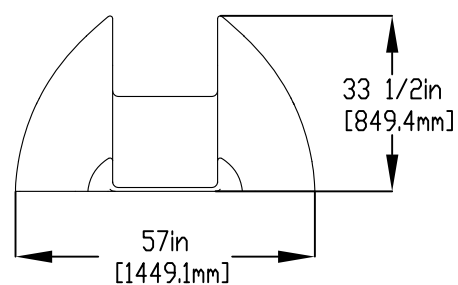
B

C

C

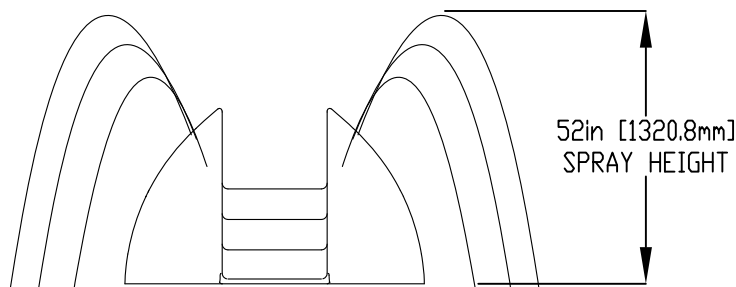
D

D



57in [1449.1mm]

33 1/2in [849.4mm]



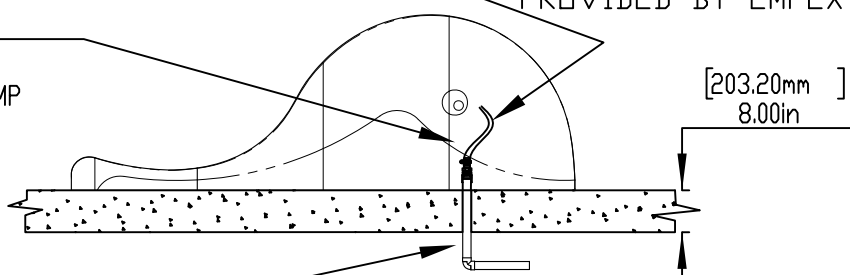
52in [1320.8mm] SPRAY HEIGHT

E

E

2"(50mm) COUPLING
2"(50mm) TO 1"(25mm) REDUCER
1"(25mm) HOSE BARB & 1" SS CLAMP
TO BE PROVIDED BY CONTRACTOR

1"(25mm) PVC HOSE PROVIDED BY EMPEX



[203.20mm] 8.00in

2"(50mm) SCH 40 PVC WATER FEED TO BE EXTENDED 8" (200mm) ABOVE SLAB.

F

F



Notes: Overall dimensions of toys are approximate. Approximate Weight: 156lbs / 70.9ogs

© EMPEX WATERTOYS

WATER SUPPLY
30gpm @ 25psi
1.89L/S @17.5m

SMALL AQUAWAVE-MOBY

T451

04/01/2020

SCALE:

Sheet 1 of 1

1

2

3

4