

NOTES:

(1) PURGE ALL WATER SUPPLY LINES TO REMOVE SOLIDS PRIOR TO TOY INSTALLATION.

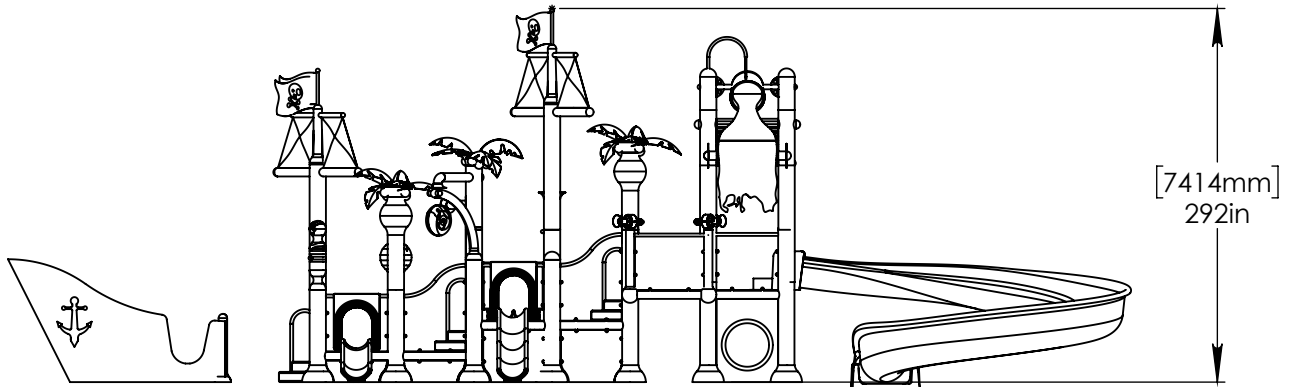
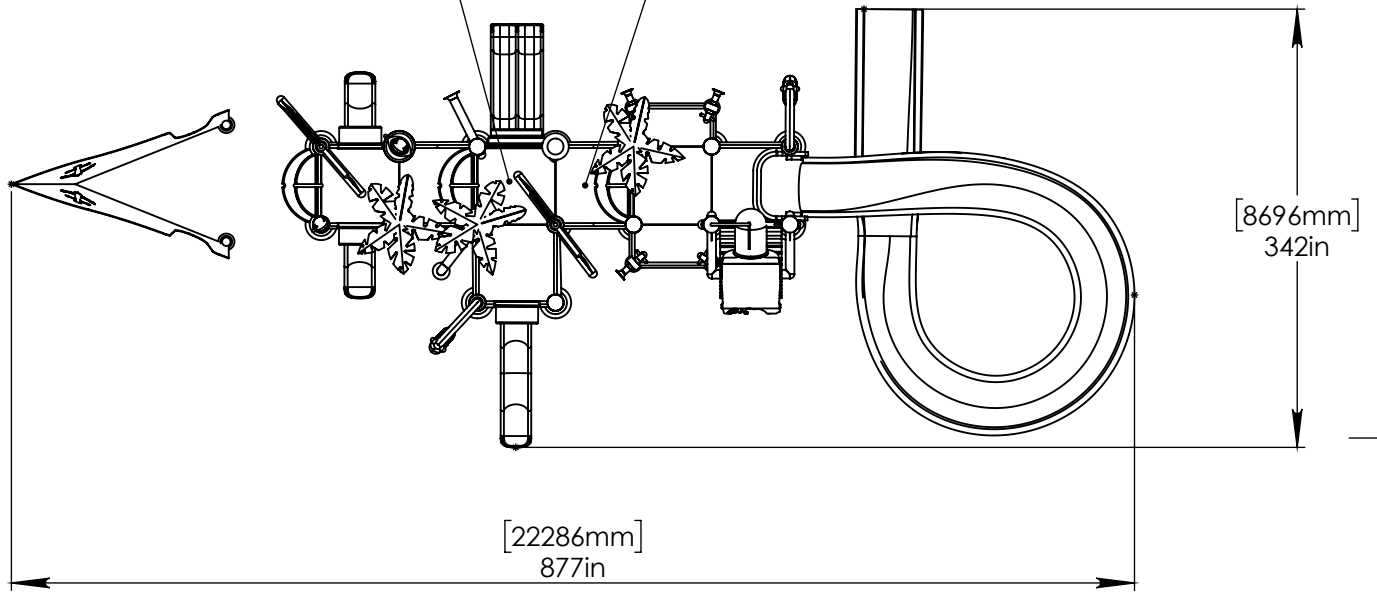
(2) PROVIDE ELECTRICAL BOND WITH POOL REBAR.

(3) INSTALL ALL WATER TOYS PLUMB AND LEVEL.

(4) PROVIDE STRAINER UPSTREAM OF TOY WITH MAX 1/32" (0.8mm) PERFORATIONS.

MANIFOLD B LOCATION

MANIFOLD A LOCATION



Notes: Overall dimensions of toys are approximate.

© EMPEX WATERTOYS

WATER SUPPLY
750 gpm @ 25 psi
50 L/S @17.5m

T610D-PIRATE

T610D-PIRATE

8/18/2016

SCALE:
1:150

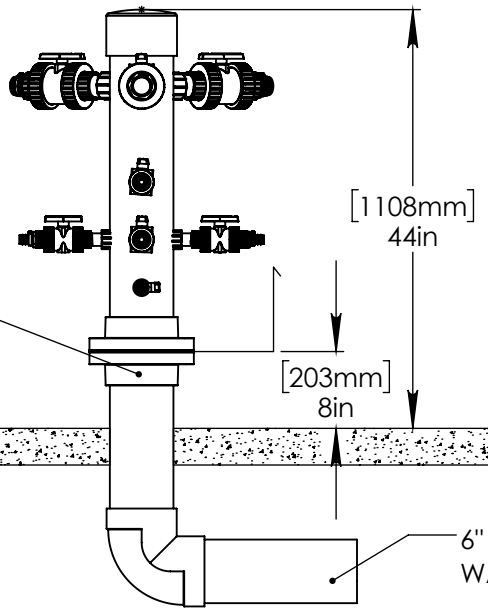
Sheet
1 of 3

MANIFOLD A

HEADER PROVIDED BY EMPEX

6" (150mm) FLANGE NOT PROVIDED BY EMPEX

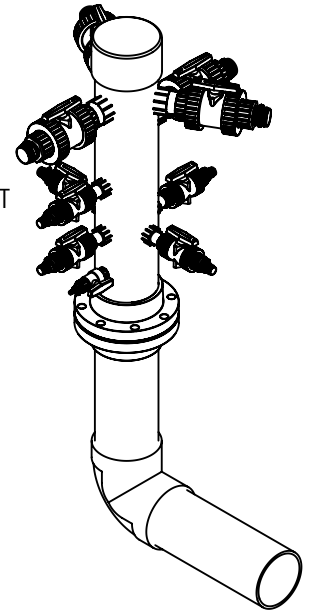
POOL SLAB



- (4) 2" (50mm) VALVES:
- (3) FIBREGLASS SLIDE
- (1) AQUADUNKER

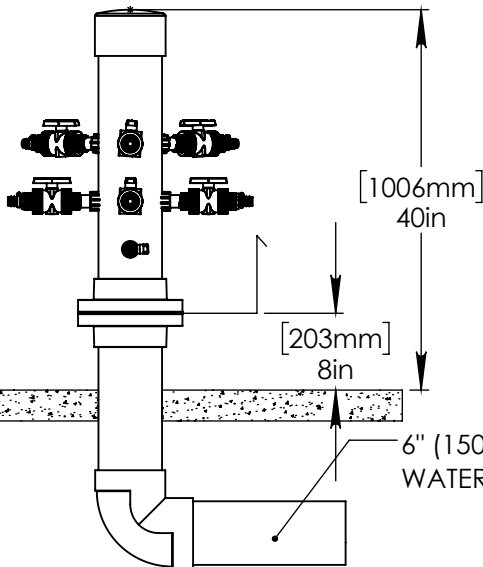
- (5) 1" (25mm) VALVES:
- (2) AQUACURTAINS
- (2) AQUAZOOKA SPLIT FEEDS
- (1) AQUAPALM

- (1) 1/2" (13mm) VALVE: AQUADUNK



MANIFOLD B

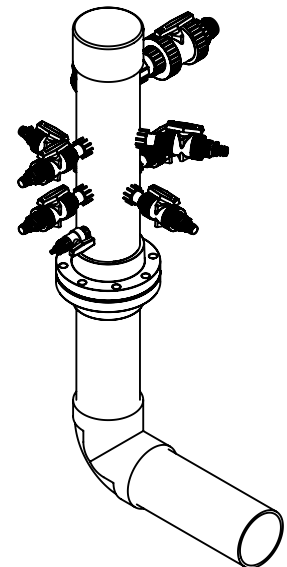
POOL SLAB



- (1) 2" (50mm) VALVES:
- (1) AQUAFALL

- (7) 1" (25mm) VALVES:
- (2) AQUAMAST
- (3) AQUAPIRATES
- (1) AQUAPALM
- (1) AQUASHOWER

- (1) 1/2" (13mm) VALVE: AQUADUNK



Notes: Overall dimensions of toys are approximate.

© EMPEX WATERTOYS

WATER SUPPLY
 750 gpm @ 25 psi
 50 L/S @ 17.5m

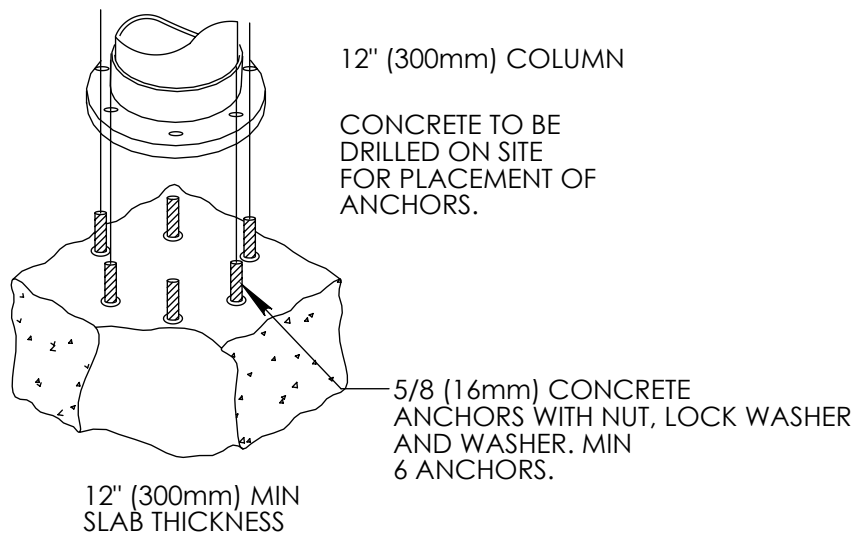
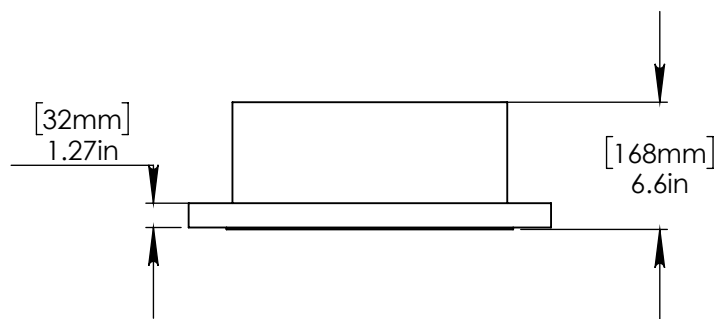
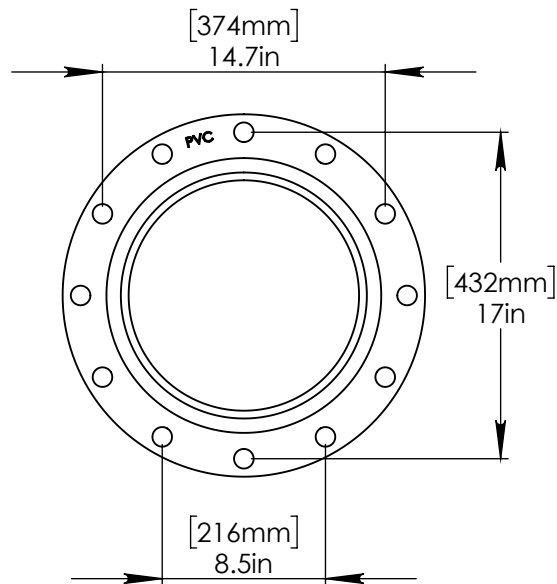
T610D-PIRATE

T610D-PIRATE

8/18/2016

SCALE:
1:10

Sheet
2 of 3



Notes: Overall dimensions of toys are approximate.

© EMPEX WATERTOYS

WATER SUPPLY
750 gpm @ 25 psi
50 L/S @ 17.5m

T610D-PIRATE

T610D-PIRATE

8/18/2016

SCALE:
1:10

Sheet
3 of 3