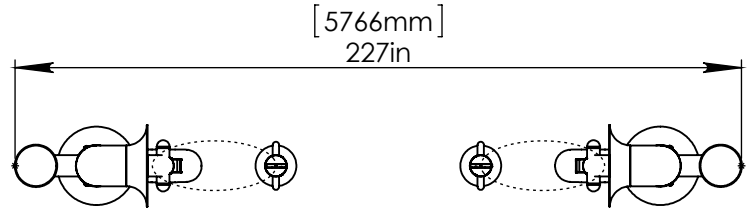


NOTES:

- (1) PURGE ALL WATER SUPPLY LINES TO REMOVE SOLIDS PRIOR TO TOY INSTALLATION.
- (2) PROVIDE ELECTRICAL BOND WITH POOL REBAR.
- (3) INSTALL ALL WATER TOYS PLUMB AND LEVEL.
- (4) PROVIDE STRAINER UPSTREAM OF TOY WITH MAX 1#32" (0.8mm) PERFORATIONS.

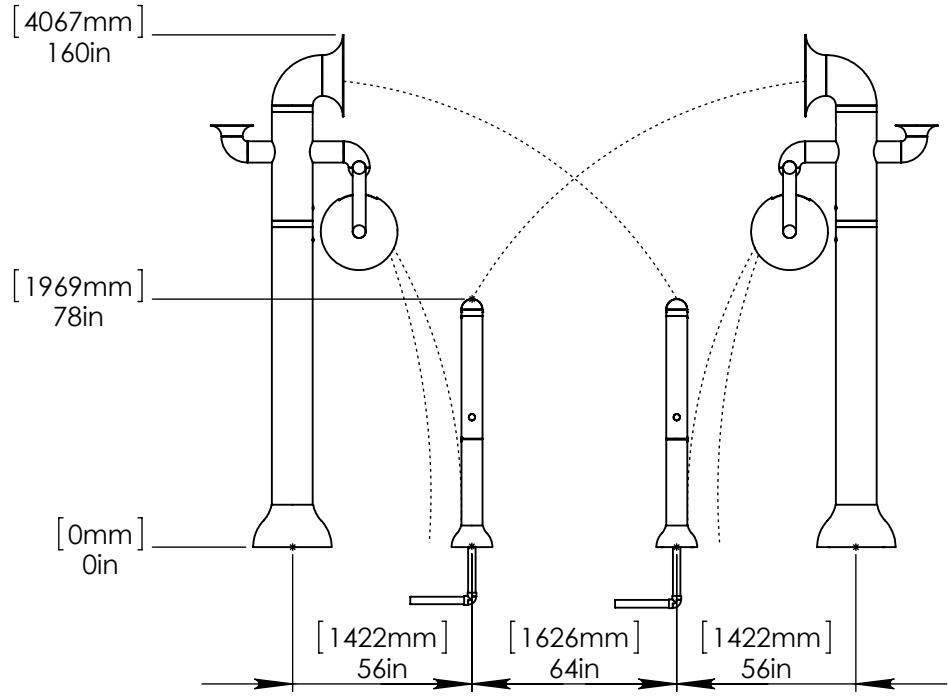
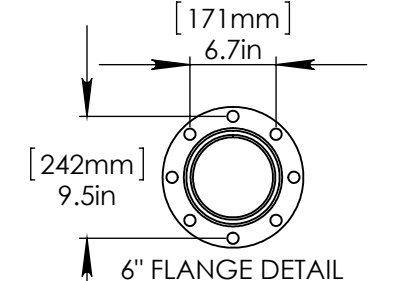
A

A



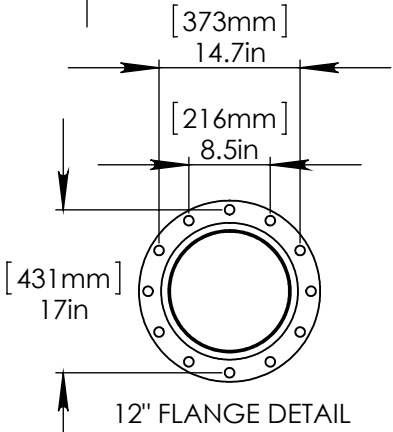
B

B



C

C



D

D

1/2" (13mm) FLEX HOSE PROVIDED BY EMPEX.

LOWER FLANGE AFTER TOY IS INSTALLED.

2" (50mm)-1/2" (13mm) REDUCER FITTING AND HOSE BARB TO BE PROVIDED BY CONTRACTOR.

STAINLESS STEEL (316)
5/8" (16mm) THREADED ROD, WASHER, LOCK WASHER, & NUT.
THREADED ROD LENGTH 11" (280mm) WITH 6" (150mm) EMBEDMENT.
USE MINIMUM 6 ANCHORS.

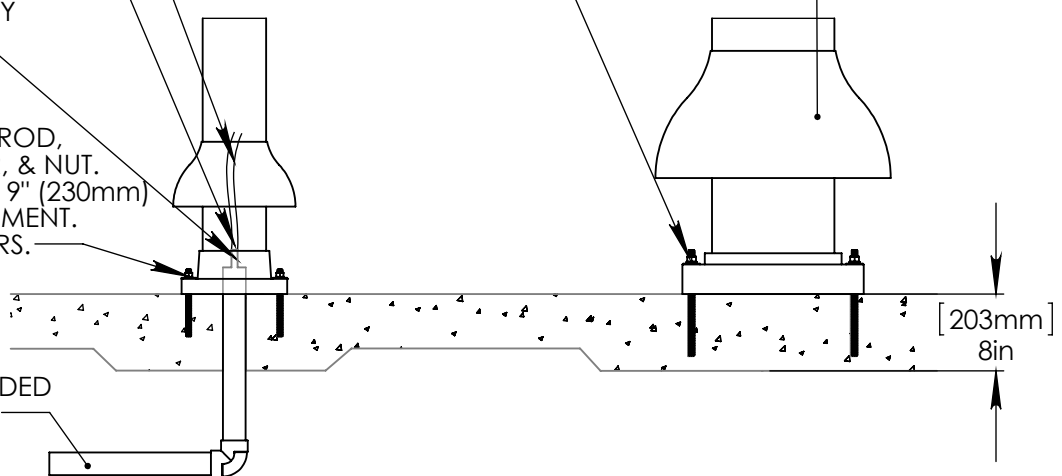
LOWER FLANGE AFTER TOY IS INSTALLED.

E

E

STAINLESS STEEL (316)
1/2" (13mm) THREADED ROD, WASHER, LOCK WASHER, & NUT.
THREADED ROD LENGTH 9" (230mm) WITH 6" (150mm) EMBEDMENT.
USE MINIMUM 6 ANCHORS.

2" (50mm) SCH 40 PVC WATERFEED TO BE EXTENDED 8" (200mm) ABOVE SLAB



[203mm] 8in

F

F



Notes: Overall dimensions of toys are approximate.

© EMPEX WATERTOYS

WATER SUPPLY

40 gpm @ 25 psi (20gpm Each)
2.5 L/S @17.5m (1.25 L/S Each)

AQUADUEL

T633

11/4/2014

SCALE: 1:60

Sheet 1 of 1