

1

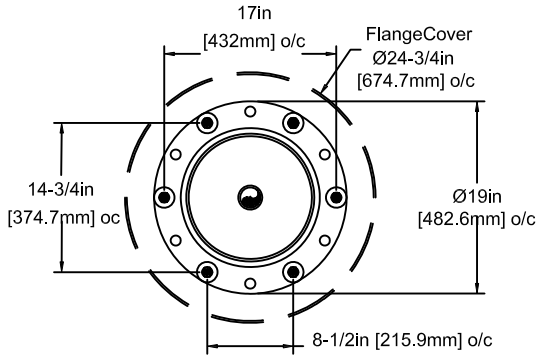
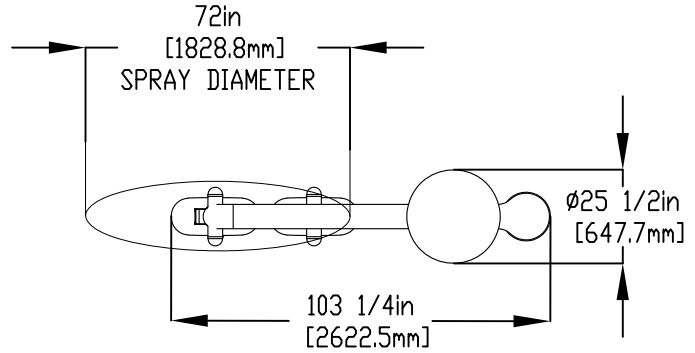
2

3

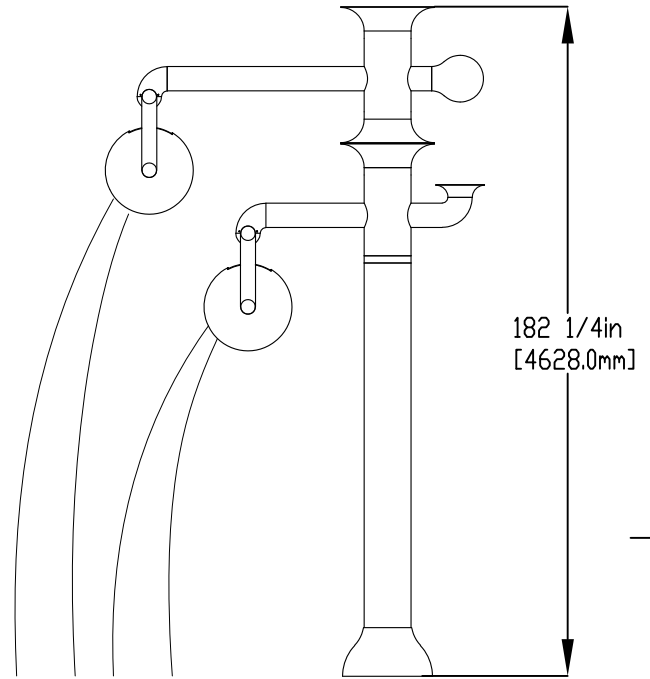
4

NOTES:

- (1) PURGE ALL WATER SUPPLY LINES TO REMOVE SOLIDS PRIOR TO TOY INSTALLATION.
- (2) PROVIDE ELECTRICAL BOND WITH POOL REBAR.
- (3) INSTALL ALL WATER TOYS PLUMB AND LEVEL.
- (4) PROVIDE STRAINER UPSTREAM OF TOY WITH MAX $\#32$ (0.8mm) PERFORATIONS.



FLANGE DETAIL



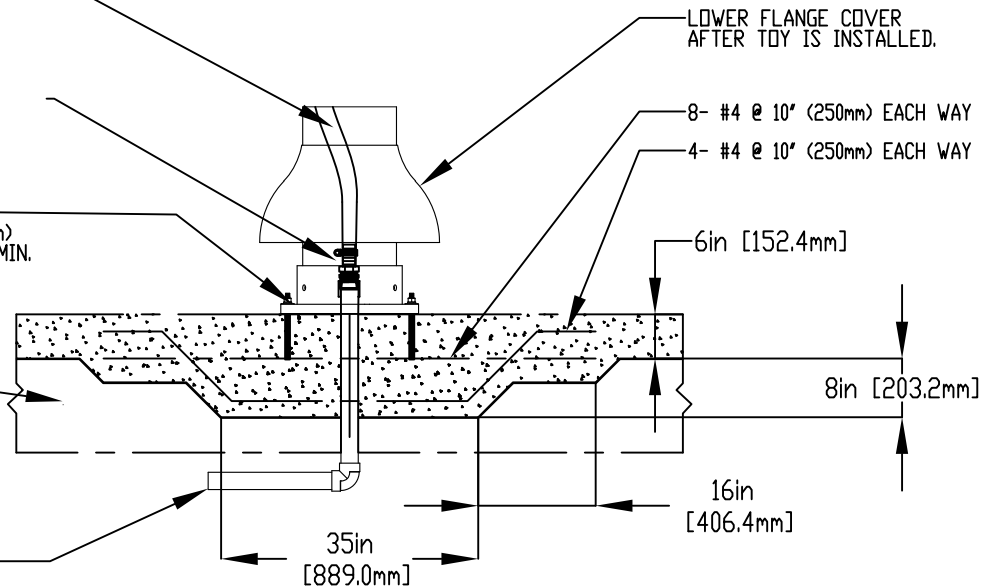
1" (25mm) PVC HOSE PROVIDED BY EMPEX

2" (50mm) COUPLING
 2" (50mm)-1" (25mm) REDUCER
 1" (25mm) HOSEBARB W/SS CLAMP
 TO BE PROVIDED BY CONTRACTOR

STAINLESS STEEL (316)
 5/8" (16mm) THREADED ROD,
 WASHER, LOCK WASHER, & NUT.
 THREADED ROD LENGTH 11" (280mm)
 WITH 6" (150mm) EMBEDMENT. USE MIN.
 8 ANCHORS.
 TO BE PROVIDED BY CONTRACTOR

GRANULAR BASE

2" (50mm) PVC SCH 40
 WATERFEED TO BE
 EXTENDED 8" (200mm)
 ABOVE SLAB.



Notes: Overall dimensions of toys are approximate.

© EMPEX WATERTOYS



WATER SUPPLY

30 gpm @ 25 psi
 1.89L/S @17.5m

AQUADUD

T643

14/12/2021

SCALE:

Sheet 1 of 1

1

2

3

4