

1

2

3

4

A

B

C

D

E

F

A

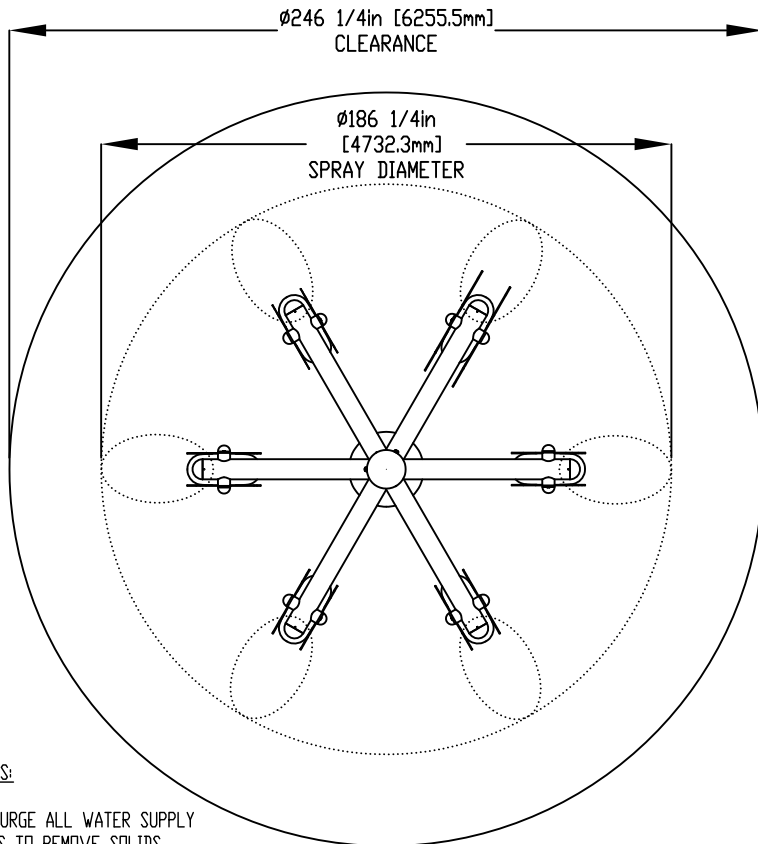
B

C

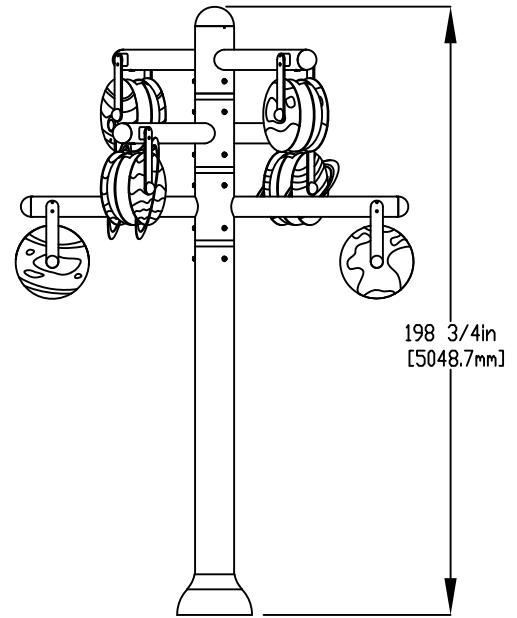
D

E

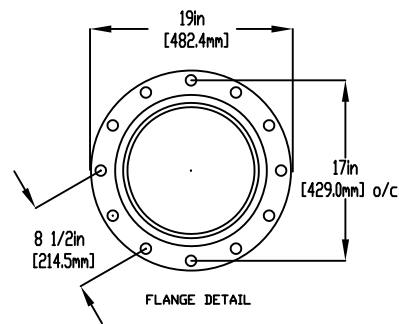
F



PLAN VIEW



ELEVATION VIEW



FLANGE DETAIL

**NOTES:**

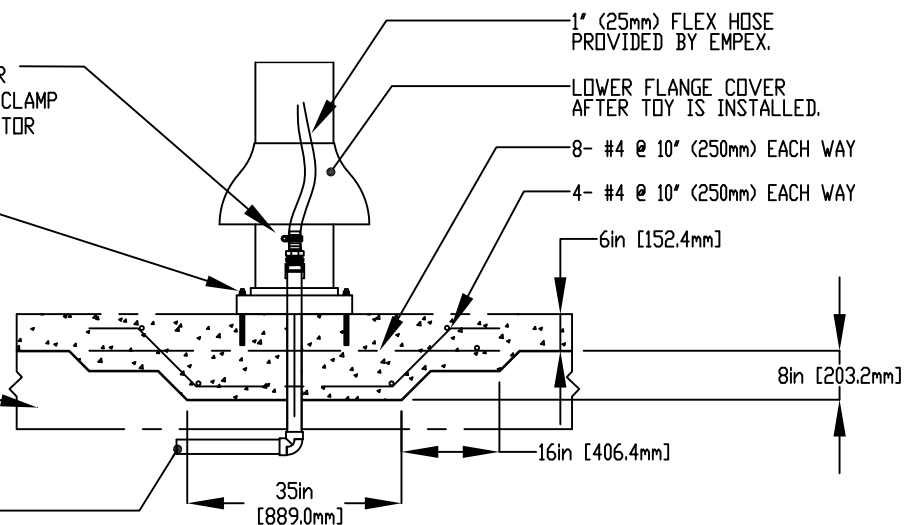
- (1) PURGE ALL WATER SUPPLY LINES TO REMOVE SOLIDS PRIOR TO TOY INSTALLATION.
- (2) PROVIDE ELECTRICAL BOND WITH POOL REBAR.
- (3) INSTALL ALL WATER TOYS PLUMB AND LEVEL.
- (4) PROVIDE STRAINER UPSTREAM OF TOY WITH MAX  $1/32$ " (0.8mm) PERFORATIONS.

2" (50mm) COUPLING  
 2" (50mm) - 1" (25mm) REDUCER  
 1" (25mm) HOSEBARB C/W SS CLAMP  
 TO BE PROVIDED BY CONTRACTOR

5/8" (16mm) x 9" (100mm) 316SS,  
 THREADED ROD, C/W FENDER WASHER,  
 LOCK WASHER & NUT, (X6) MINIMUM  
 6" (152mm) EMBEDMENT. EPOXY SET  
 ANCHORS ADHESIVE  
 TO BE PROVIDED BY CONTRACTOR

GRANULAR BASE

2" (50mm) PVC SCH 40  
 WATERFEED TO BE  
 EXTENDED 8" (200mm)  
 ABOVE SLAB.



Notes: Overall dimensions of toys are approximate.

© EMPEX WATERTOYS



WATER SUPPLY

50 gpm @ 25 psi  
 3.15L/S @17.5m

SPLASHIN' PLANET

T726

16/11/2022

SCALE:

Sheet 1 of 1

1

2

3

4