

1

2

3

4

**NOTES:**

(1) PURGE ALL WATER SUPPLY LINES TO REMOVE SOLIDS PRIOR TO TOY INSTALLATION.

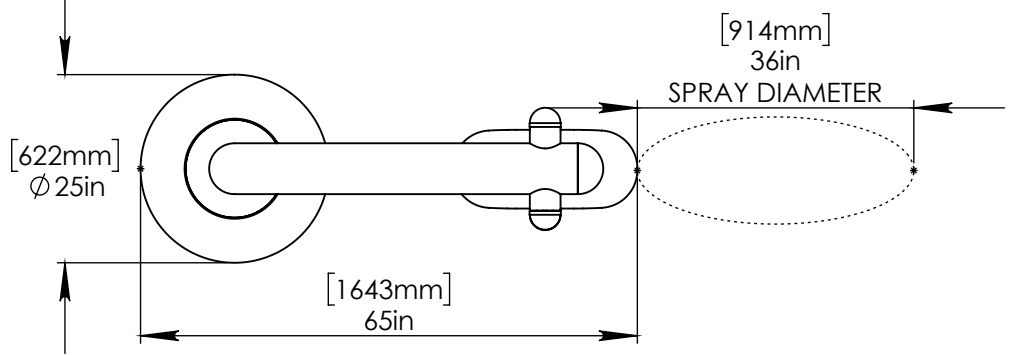
(2) PROVIDE ELECTRICAL BOND WITH POOL REBAR.

(3) INSTALL ALL WATER TOYS PLUMB AND LEVEL.

(4) PROVIDE STRAINER UPSTREAM OF TOY WITH MAX 1/32" (0.8mm) PERFORATIONS.

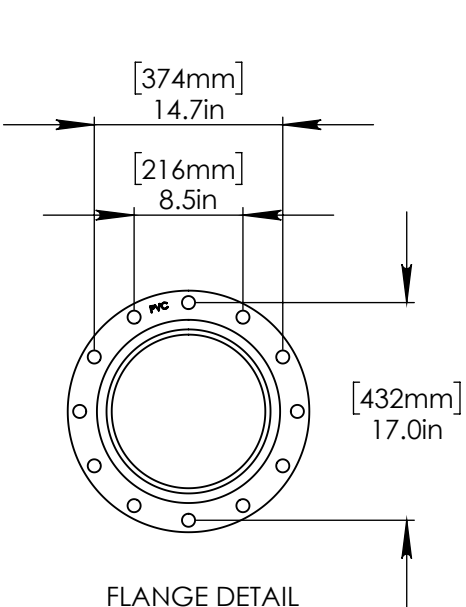
A

A

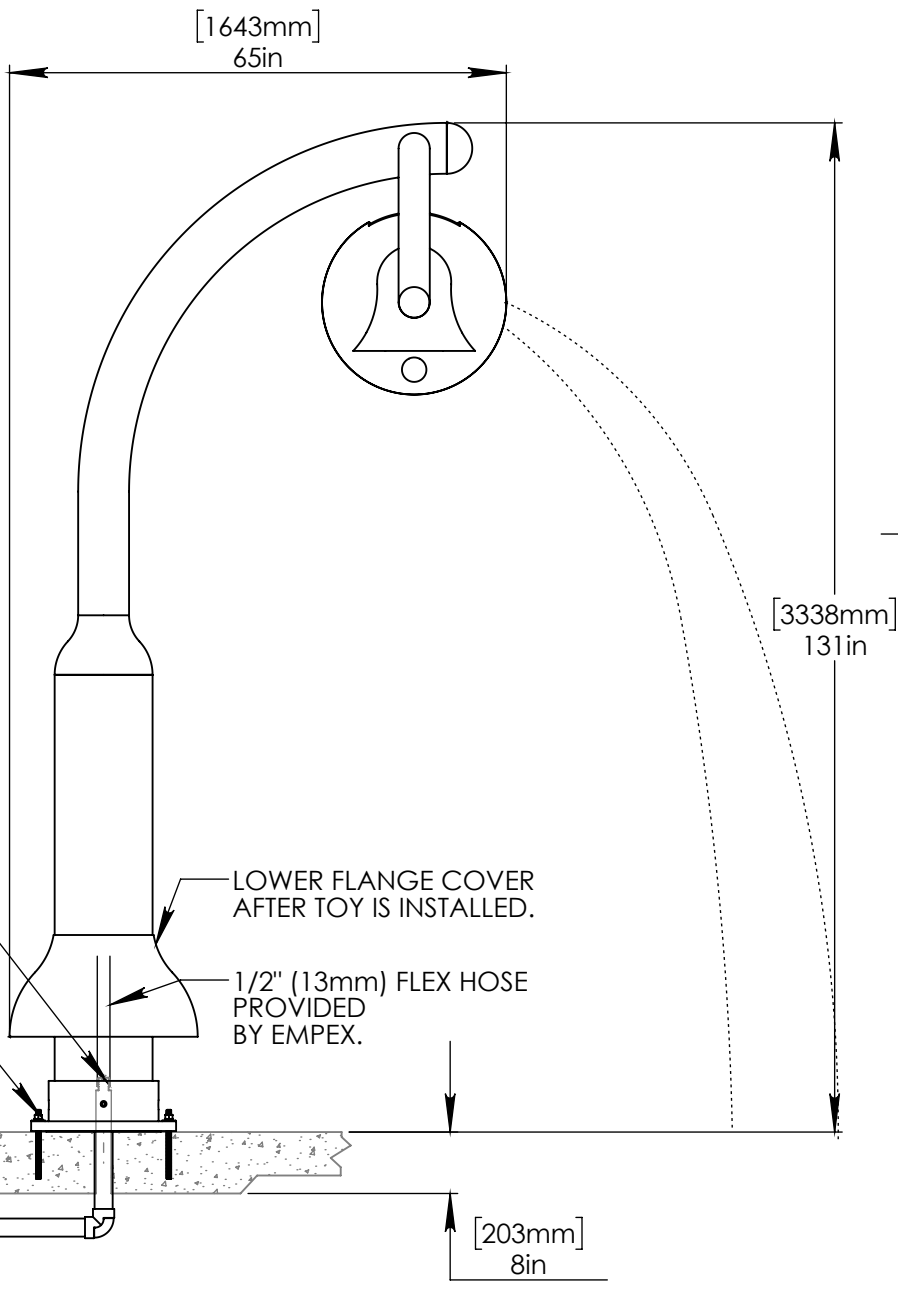


B

B



FLANGE DETAIL



2" (50mm)-1/2" (13mm) FITTING AND HOSE BARB TO BE SUPPLIED BY CONTRACTOR.

STAINLESS STEEL (316) 5/8" (16mm) THREADED ROD, WASHER, LOCK WASHER, & NUT. THREADED ROD LENGTH 9" (230mm) WITH 6" (150mm) EMBEDMENT. USE MINIMUM 6 ANCHORS.

LOWER FLANGE COVER AFTER TOY IS INSTALLED.

1/2" (13mm) FLEX HOSE PROVIDED BY EMPEX.

2" (50mm) SCH 40 PVC WATERFEED TO BE EXTENDED 8" (200mm) ABOVE SLAB.

D

D

E

E

F

F



Notes: Overall dimensions of toys are approximate.

© EMPEX WATERTOYS

**WATER SUPPLY**  
10 gpm @ 25 psi  
0.63 L/S @ 17.5m

# AQUADUNK FIRE

**T816-F**

7/18/2018

SCALE:  
1:25

Sheet  
1 of 1

1

2

3

4