

1

2

3

4

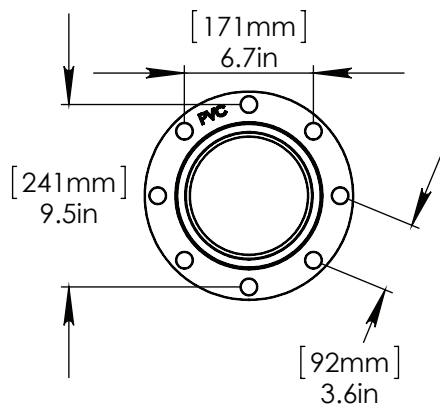
NOTES:

(1) PURGE ALL WATER SUPPLY LINES TO REMOVE SOLIDS PRIOR TO TOY INSTALLATION.

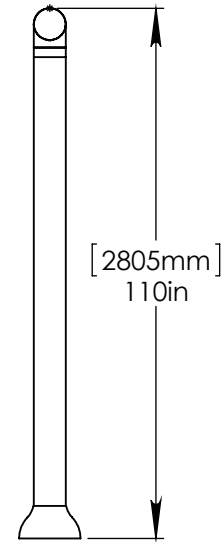
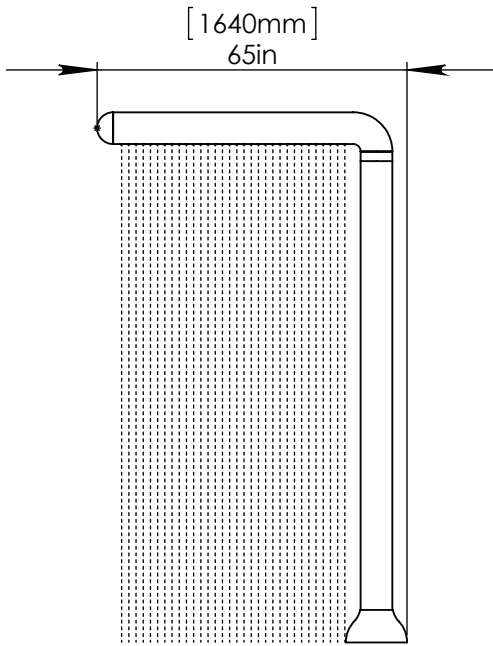
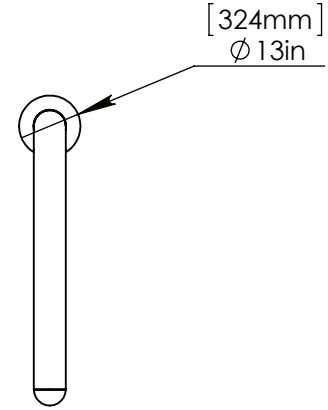
(2) PROVIDE ELECTRICAL BOND WITH POOL REBAR.

(3) INSTALL ALL WATER TOYS PLUMB AND LEVEL.

(4) PROVIDE STRAINER UPSTREAM OF TOY WITH MAX 1#32" (0.8mm) PERFORATIONS.



FLANGE DETAIL



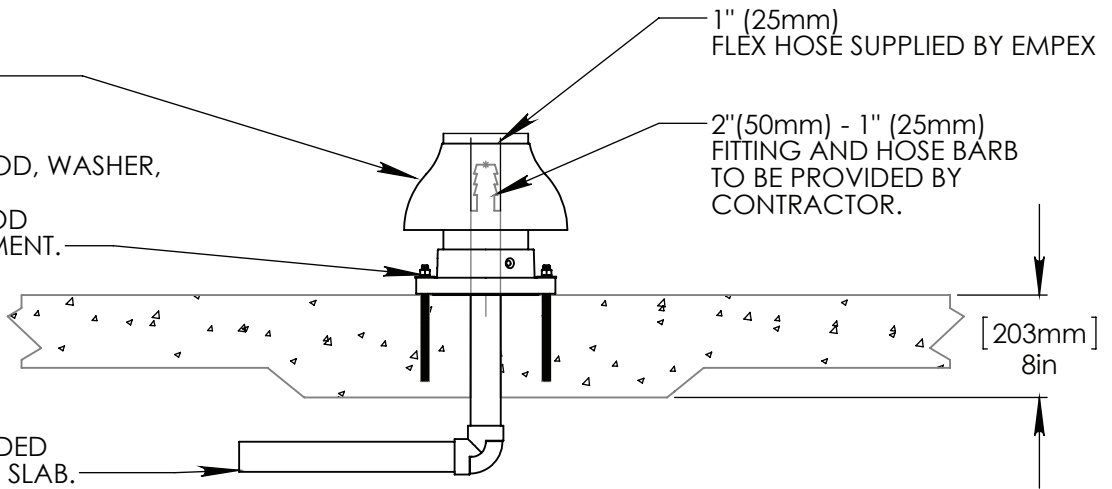
LOWER FLANGE COVER AFTER TOY IS INSTALLED.

STAINLESS STEEL (316)
1/2" (13mm) THREADED ROD, WASHER,
LOCK WASHER, & NUT.
9" (230mm) THREADED ROD
WITH 6" (150mm) EMBEDMENT.

1" (25mm)
FLEX HOSE SUPPLIED BY EMPEX

2" (50mm) - 1" (25mm)
FITTING AND HOSE BARB
TO BE PROVIDED BY
CONTRACTOR.

2" (50mm) SCH 40 PVC
WATERFEED TO BE EXTENDED
8" (200mm) ABOVE POOL SLAB.



Notes: Overall dimensions of toys are approximate.

© EMPEX WATERTOYS



WATER SUPPLY
30 gpm @ 25 psi
1.89L/S @ 17.5m

AQUASTREAM

T870

9/17/2014

SCALE:
1:40

Sheet
1 of 1

1

2

3

4