

1

2

3

4

NOTES:

(1) PURGE ALL WATER SUPPLY LINES TO REMOVE SOLIDS PRIOR TO TOY INSTALLATION.

(2) PROVIDE ELECTRICAL BOND WITH POOL REBAR.

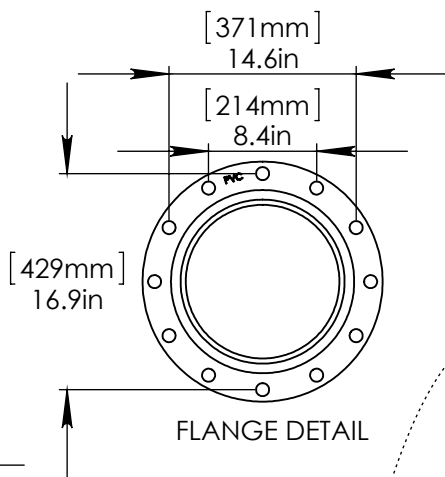
(3) INSTALL ALL WATER TOYS PLUMB AND LEVEL.

(4) PROVIDE STRAINER UPSTREAM OF TOY WITH MAX $1\frac{1}{32}$ " (0.8mm) PERFORATIONS.

[3658mm]
Ø 144in
SPRAY DIAMETER

[1276mm]
50in

[648mm]
Ø 26in



[2845mm]
112in
SPRAY HEIGHT

[2241mm]
88in

LOWER FLANGE COVER AFTER TOY IS INSTALLED.

2" (50mm) FLEX HOSE PROVIDED BY EMPEX.

2" (50mm) FITTING AND HOSE BARB TO BE SUPPLIED BY CONTRACTOR.

STAINLESS STEEL (316)
5/8" (16mm) THREADED ROD, WASHER, LOCK WASHER, & NUT.
THREADED ROD LENGTH 9" (230mm) WITH 6" (150mm) EMBEDMENT. USE MINIMUM 6 ANCHORS.

2" (50mm) SCH 40 PVC WATERFEED TO BE EXTENDED 8" (200mm) ABOVE SLAB.

[203mm]
8in



Notes: Overall dimensions of toys are approximate.

© EMPEX WATERTOYS

WATER SUPPLY

60 gpm @ 25 psi
3.79 L/S @ 17.5m

AQUAZIG

T875

11/5/2014

SCALE:
1:42

Sheet
1 of 1

1

2

3

4