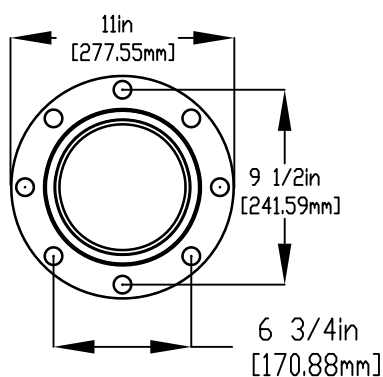
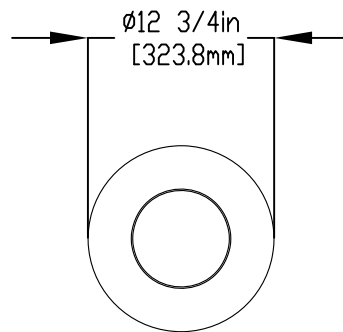
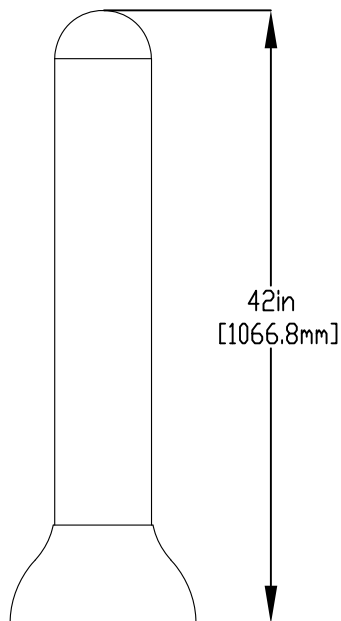


NOTES:

- (1) PURGE ALL WATER SUPPLY LINES TO REMOVE SOLIDS PRIOR TO TOY INSTALLATION.
- (2) PROVIDE ELECTRICAL BOND WITH POOL REBAR.
- (3) INSTALL ALL WATER TOYS PLUMB AND LEVEL.
- (4) PROVIDE STRAINER UPSTREAM OF TOY WITH MAX 1/32" (0.8mm) PERFORATIONS.

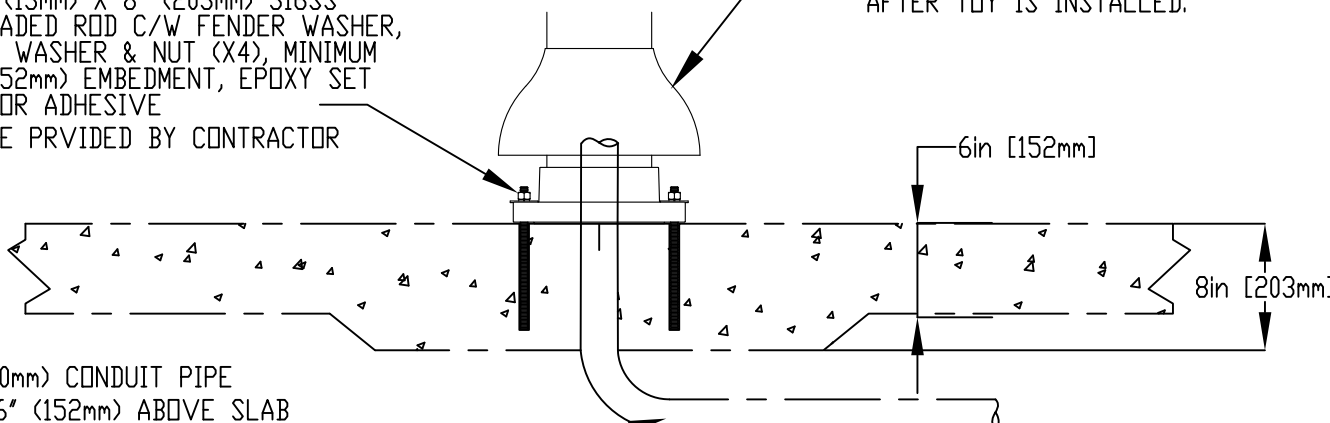


FLANGE DETAIL



1/2" (13mm) X 8" (203mm) 316SS  
THREADED ROD C/W FENDER WASHER,  
LOCK WASHER & NUT (X4), MINIMUM  
6" (152mm) EMBEDMENT, EPOXY SET  
ANCHOR ADHESIVE  
TO BE PROVIDED BY CONTRACTOR

LOWER FLANGE COVER  
AFTER TOY IS INSTALLED.



2" (50mm) CONDUIT PIPE  
CUT 6" (152mm) ABOVE SLAB  
TO RUN 24V CONTROL WIRING  
TO CONTROL PANEL TO BE  
PROVIDED BY CONTRACTOR



Notes: Overall dimensions of toys are approximate.  
Approximate Weight:

© EMPEX WATERTOYS

WATER SUPPLY

AQUASTART

N/A

T901

13/01/2021

SCALE:

Sheet  
1 of 1