

1

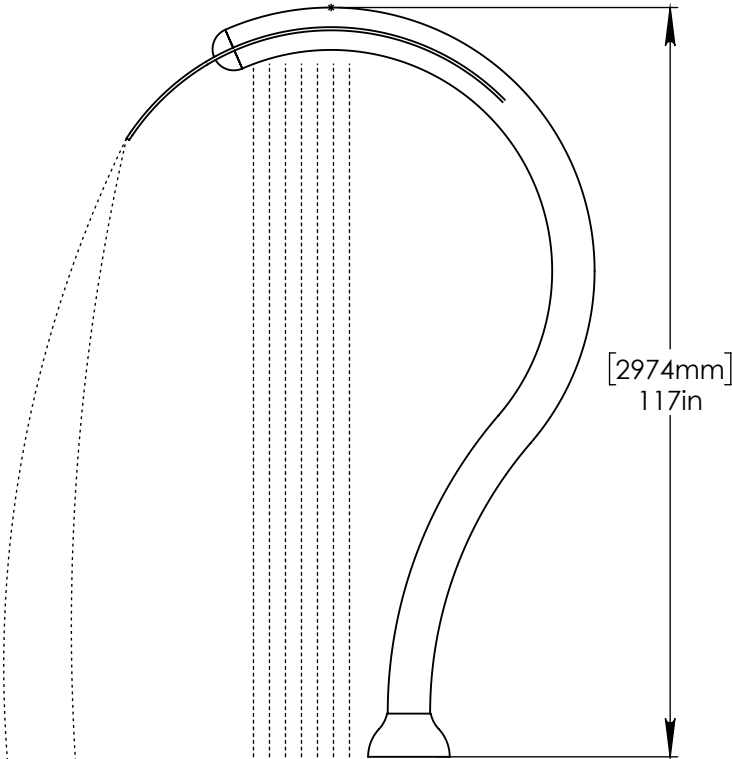
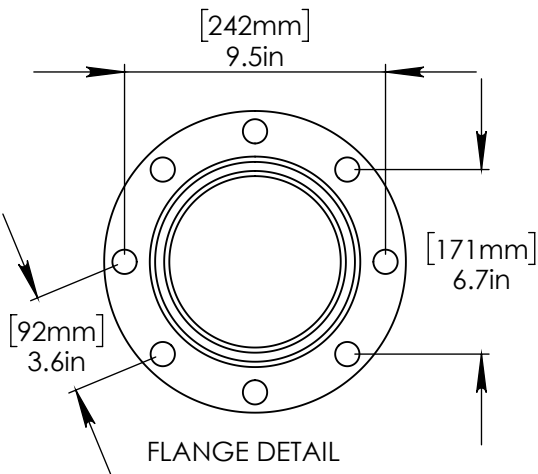
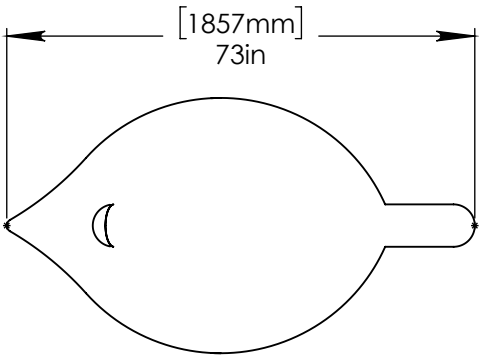
2

3

4

NOTES:

- (1) PURGE ALL WATER SUPPLY LINES TO REMOVE SOLIDS PRIOR TO TOY INSTALLATION.
- (2) PROVIDE ELECTRICAL BOND WITH POOL REBAR.
- (3) INSTALL ALL WATER TOYS PLUMB AND LEVEL.
- (4) PROVIDE STRAINER UPSTREAM OF TOY WITH MAX 1#32" (0.8mm) PERFORATIONS.



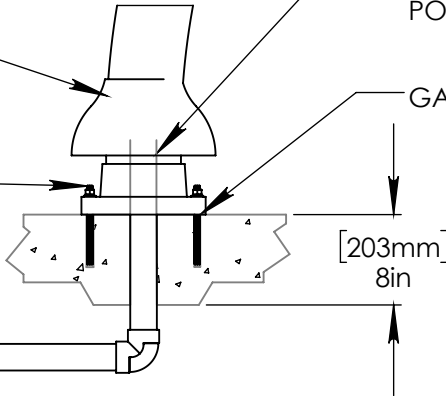
LOWER FLANGE COVER AFTER TOY IS INSTALLED.

STAINLESS STEEL (316)  
5/8" (16mm) THREADED ROD, WASHER,  
LOCK WASHER, & NUT.  
THREADED ROD LENGTH 9" (230mm)  
WITH 6" (150mm) EMBEDMENT. USE  
MINIMUM 6 ANCHORS.

2" (50mm) SCH 40 PVC  
WATER FEED TO BE EXTENDED  
8" (200mm) ABOVE SLAB.

EXTEND WATERFEED  
MIN 3" (75mm) ABOVE  
POOL SLAB.

GASKET



Notes: Overall dimensions of toys are approximate.

© EMPEX WATERTOYS

**WATER SUPPLY**  
70 gpm @ 25 psi  
4.4 L/S @17.5m

**AQUALEAF**

**TR340**

8/24/2016

SCALE:  
1:30

Sheet  
1 of 1

1

2

3

4