

1

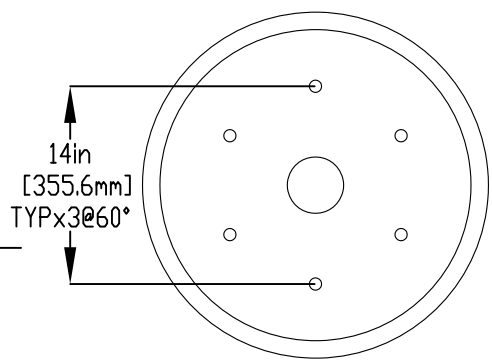
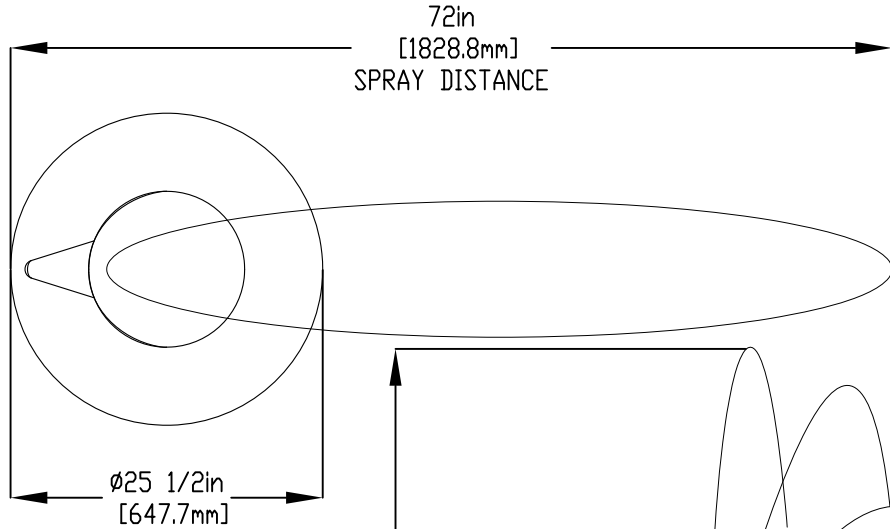
2

3

4

NOTES:

- (1) PURGE ALL WATER SUPPLY LINES TO REMOVE SOLIDS PRIOR TO TOY INSTALLATION.
- (2) PROVIDE ELECTRICAL BOND WITH POOL REBAR.
- (3) INSTALL ALL WATER TOYS PLUMB AND LEVEL.
- (4) PROVIDE STRAINER UPSTREAM OF TOY WITH MAX $\#32$ (0.8mm) PERFORATIONS.



BASE DETAIL

66 1/4in [1683.7733mm] SPRAY HEIGHT NTS

45 1/4in [1148.8mm]

LOWER TOP TOY PORTION ONTO BASE.

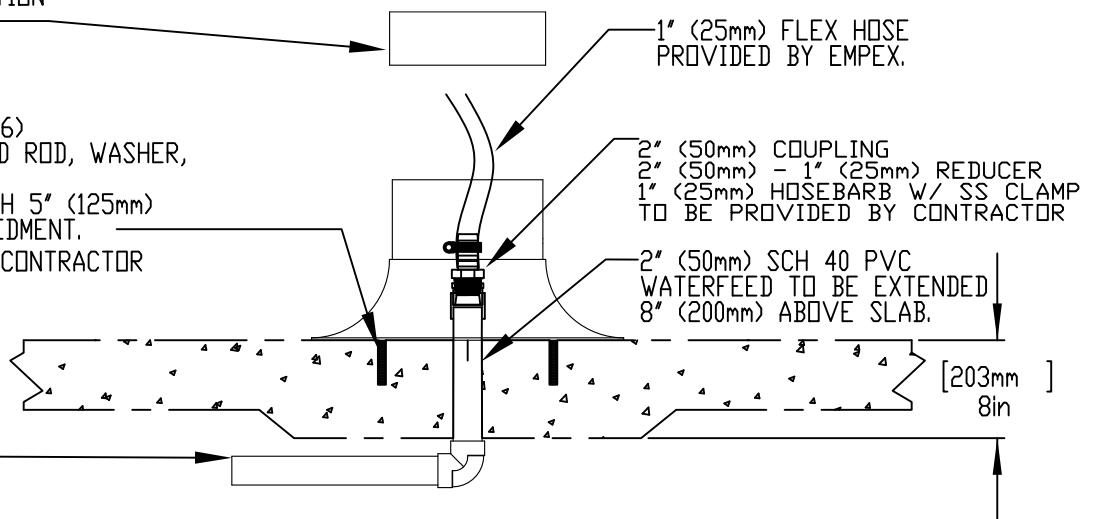
STAINLESS STEEL (316)
 5/8" (16mm) THREADED ROD, WASHER, LOCK WASHER, & NUT.
 THREADED ROD LENGTH 5" (125mm) WITH 4" (100mm) EMBEDMENT.
 TO BE PROVIDED BY CONTRACTOR

1" (25mm) FLEX HOSE PROVIDED BY EMPEX.

2" (50mm) COUPLING
 2" (50mm) - 1" (25mm) REDUCER
 1" (25mm) HOSEBARB W/ SS CLAMP TO BE PROVIDED BY CONTRACTOR

2" (50mm) SCH 40 PVC WATERFEED TO BE EXTENDED 8" (200mm) ABOVE SLAB.

2" (50mm) PVC SCH 40 WATER FEED



Notes: Overall dimensions of toys are approximate.
 Approximate Weight: 26lbs / 11.8kgs

© EMPEX WATERTOYS



WATER SUPPLY

30 gpm @ 25 psi
 1.89L/S @ 17.5m

AQUAPING

Z203

01/05/2020

SCALE:

Sheet 1 of 1

1

2

3

4