

1

2

3

4

NOTES:

(1) PURGE ALL WATER SUPPLY LINES TO REMOVE SOLIDS PRIOR TO TOY INSTALLATION.

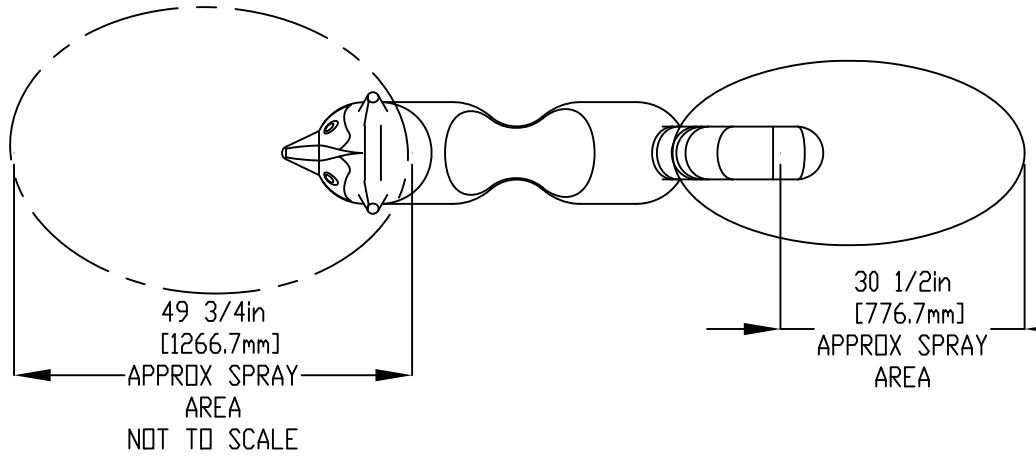
(2) PROVIDE ELECTRICAL BOND WITH POOL REBAR.

(3) INSTALL ALL WATER TOYS PLUMB AND LEVEL.

(4) PROVIDE STRAINER UPSTREAM OF TOY WITH MAX PERFORATIONS. 1#32" (0.8mm)

A

A

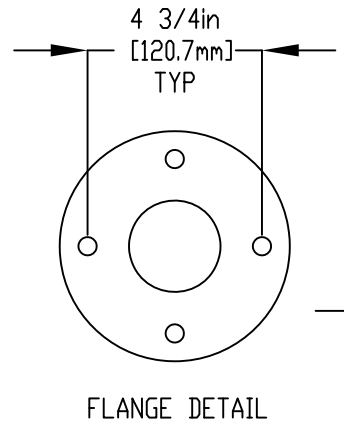
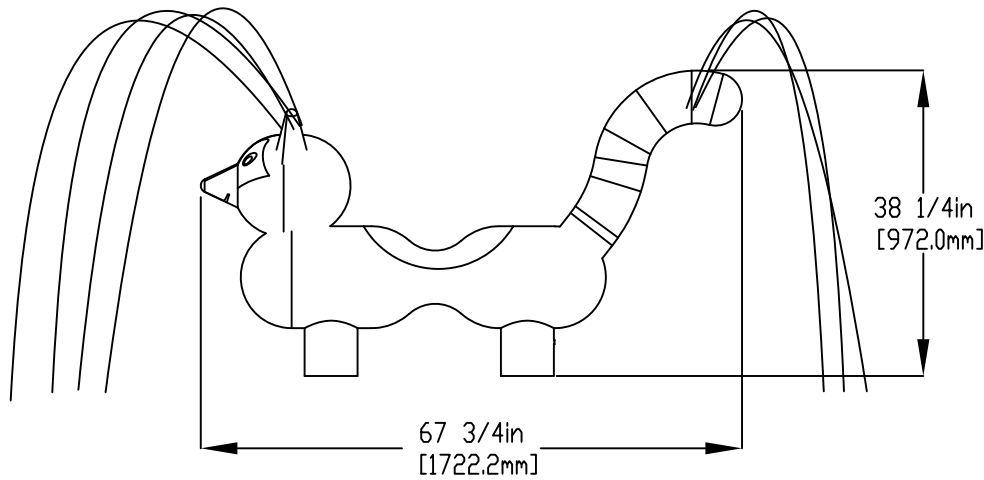


B

B

C

C



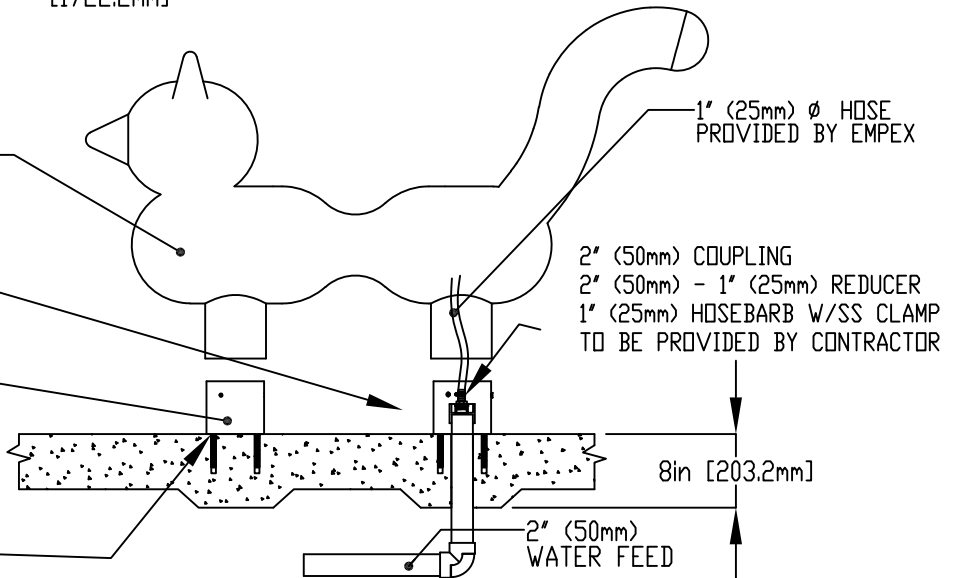
D

D

(3) LOWER TOY AND BOLT TO INSERT.

(2) MAKE PLUMBING CONNECTION.

(1) BOLT INTSERT.



1/2" (13mm) STAINLESS STEEL (316) THREADED ROD, WASHER, LOCK WASHER, & NUT. SUGGESTED 7" (180mm) THREADED ROD WITH 5" (150mm) EMBEDMENT. TO BE PROVIDED BY CONTRACTOR

E

E

F

F



Notes: Overall dimensions of toys are approximate. Approximate Weight: 10lbs / 4.5kgs

© EMPEX WATERTOYS

WATER SUPPLY

30 gpm @ 25 psi
1.89L/S @17.5m

AQUARACCOON

Z210

25/10/2021

SCALE:

Sheet
1 of 1

1

2

3

4