

A

A

NOTES:

(1) PURGE ALL WATER SUPPLY LINES TO REMOVE SOLIDS PRIOR TO TOY INSTALLATION.

(2) PROVIDE ELECTRICAL BOND WITH POOL REBAR.

(3) INSTALL ALL WATER TOYS PLUMB AND LEVEL.

(4) PROVIDE STRAINER UPSTREAM OF TOY WITH MAX 1/32" (0.8mm) PERFORATIONS.

ø42 1/2in [1080.2mm]
SPRAY DIAMETER
NTS

24 1/2in
[622.3mm]

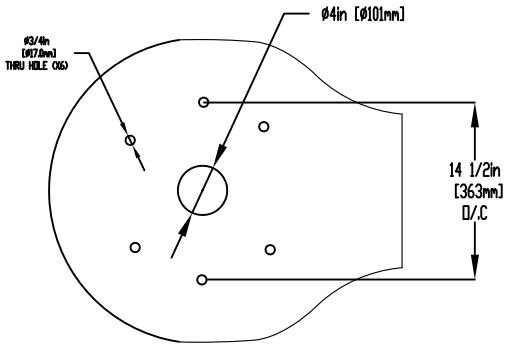
33 1/2in
[851.3mm]

B

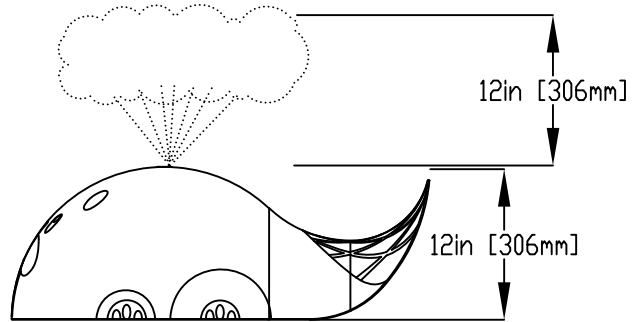
B

C

C



MOUNTING BASE DETAIL



D

D

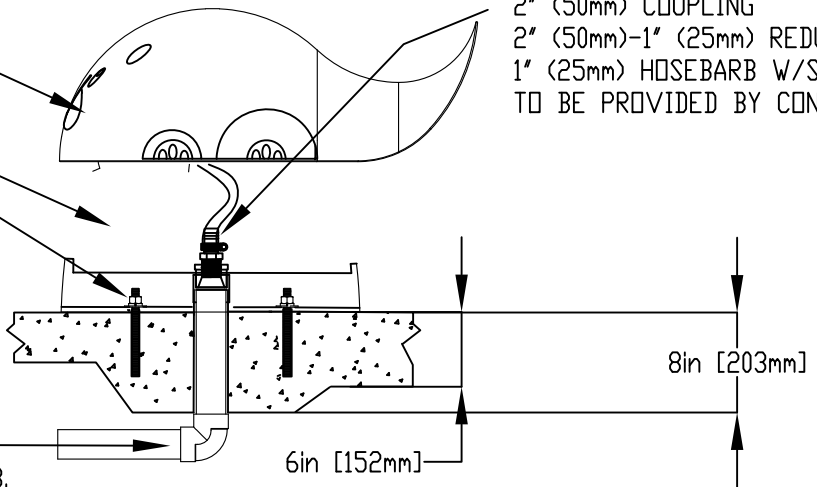
LOWER TOY ONCE BASE IS ANCHORED TO THE GROUND.

1" (25mm) FLEX HOSE PROVIDED BY EMPEX.

1/2" (13mm) X 8" (203mm) 316SS THREADED ROD, C/W FENDER WASHER, LOCK WASHER & NUT (X4). MINIMUM 6" (152mm) EMBEDMENT, EPOXY SET ANCHOR ADHESIVE TO BE PROVIDED BY CONTRACTOR

WATERFEED 2" (50mm) PVC SCH 40 PIPE EXTENDED 6" (152mm) ABOVE POOL SLAB.

2" (50mm) COUPLING
2" (50mm)-1" (25mm) REDUCER
1" (25mm) HOSEBARB W/SS CLAMP TO BE PROVIDED BY CONTRACTOR



E

E

F

F



Notes: Overall dimensions of toys are approximate.
Approximate Weight: 28lbs / 12.7kgs

© EMPEX WATERTOYS

WATER SUPPLY

15 gpm @ 5 psi
1 L/S @ 3.5m

AQUABEAV

Z2121

22/06/2022

SCALE:

Sheet
1 of 1