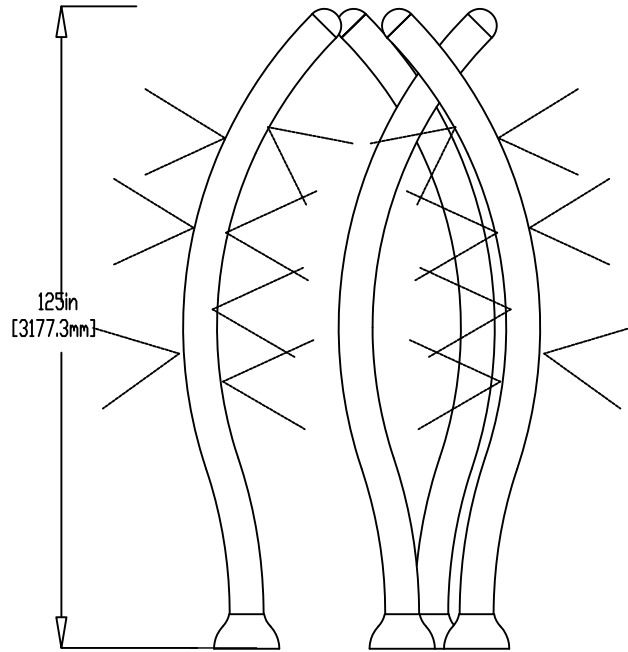
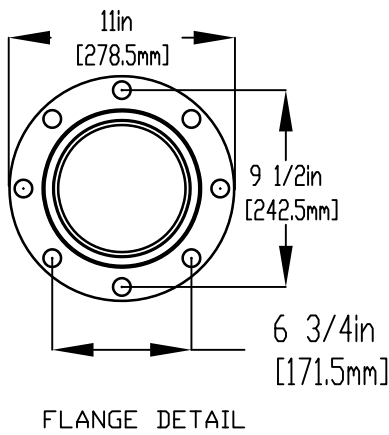
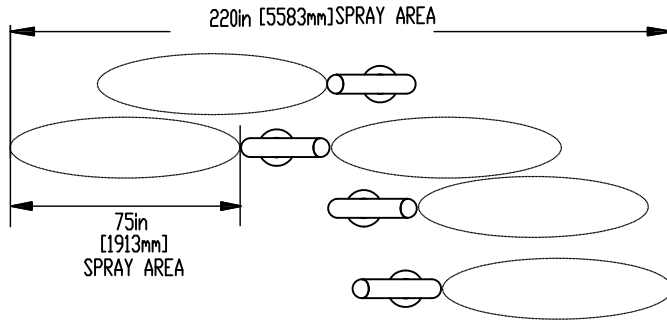


NOTES:

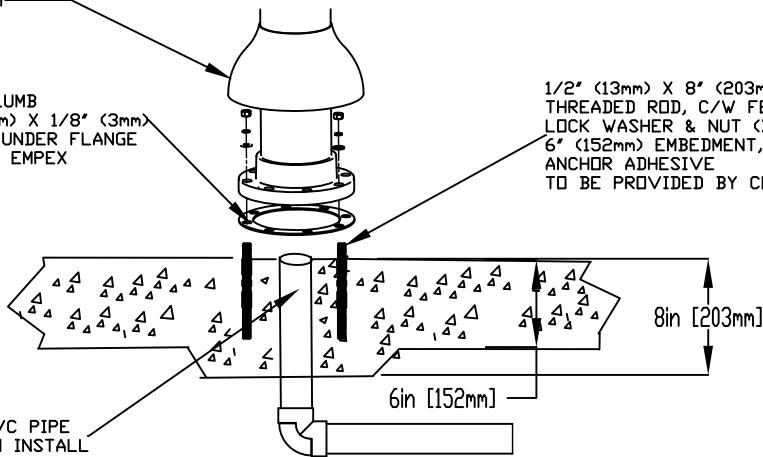
- (1) PURGE ALL WATER SUPPLY LINES TO REMOVE SOLIDS PRIOR TO TOY INSTALLATION.
- (2) PROVIDE ELECTRICAL BOND WITH POOL REBAR.
- (3) INSTALL ALL WATER TOYS PLUMB AND LEVEL.
- (4) PROVIDE STRAINER UPSTREAM OF TOY WITH MAX 1/32" (0.8mm) PERFORATIONS.



LOWER FLANGE COVERS AFTER TOY IS INSTALLED

FLOODED COLUMN
ENSURE LEVEL & PLUMB
4" (101mm) (6" 152mm) X 1/8" (3mm)
GASKET, INSTALLED UNDER FLANGE
TO BE PROVIDED BY EMPEX

1/2" (13mm) X 8" (203mm) 316SS
THREADED ROD, C/W FENDER WASHER,
LOCK WASHER & NUT (X6) MINIMUM
6" (152mm) EMBEDMENT, EPOXY SET
ANCHOR ADHESIVE
TO BE PROVIDED BY CONTRACTOR



WATRFEEED
2" (50mm) SCH 40 PVC PIPE
CUT CLOSE PRIOR TO INSTALL
TO ALLOW FULL DRAINAGE

Notes: Overall dimensions of toys are approximate.
Approximate Weight: 68lbs/30.9kgs per unit

© EMPEX WATERTOYS



WATER SUPPLY PER UNIT

30 gpm @ 25 psi
1.89L/S @17.5m

AQUAGRASSO QUAD

M517-4

06/06/2023

SCALE:

Sheet
1 of 1